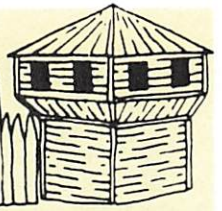


W

WALSH COUNTY HISTORICAL SOCIETY



MARCH 2014

WALSH COUNTY HISTORICAL SOCIETY NEWSLETTER

"Old Fashioned Christmas" held at Heritage Village

The Walsh County Historical Society hosted an "old fashioned Christmas" at Heritage Village December 14, 2013.

Gary Elfman of Warwick, ND brought his sleigh and a team of black Percheron horses to give sleigh rides. Polish dancers led by Sandy Schuster, Lutheran youth group led by Rev. Chris Gaule provide Christmas music and Tammy Henriksen was emcee and also provided music. Santa Claus visited with the children and volunteers provided food, serving from 12 noon to 4 p.m.

Co-chairmen were Jean Bodmer and Joe Koehmstedt.



Polish attire - From left: Mary Dvorak, Jenevive Reck, and Geneva Flaaskog.



Tammy Henriksen, emcee, and Rev. Chris Gaule.



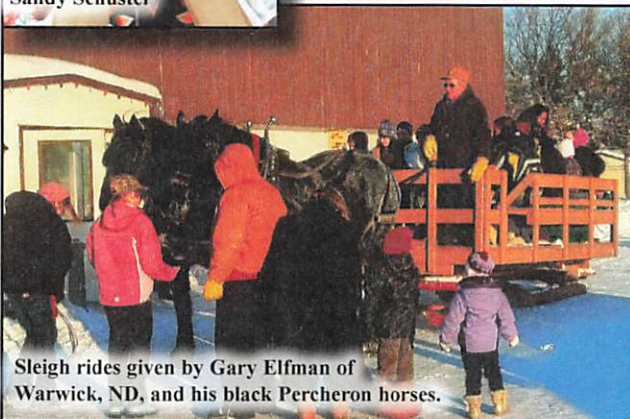
Rev. Chris Gaule and children from Grafton Lutheran Youth Group.



Sandy Schuster



Santa Claus and Mrs. Claus visiting with children.



Sleigh rides given by Gary Elfman of Warwick, ND, and his black Percheron horses.



PNA Polish Dancers

Walsh County Historical Museum

The highlight of the summer was Museum Alive which was held on Sunday, June 23. The day began with an old time tractor run which began at the Tony Gudajtes Farm and ended in Minto in time to join the parade. We would like to thank Jim and Tony Gudajtes and Jennifer Kelley for organizing this event. Along with the parade, we had many attractions at the museum including a dunking tank and Daniel Sauerwein who did Civil War enactment. Special music was provided by Ted Holberg and also the Prairie Chicks. There was plenty of food and fun for all ages and we appreciate everyone who attended and participated to make the day a success.

One week prior to Museum Alive, the doors of the museum were opened for tours in conjunction with the Guinness World Book Ton of Chili attempt. We were happy to say that approximately one hundred people toured the museum that day. The event was also financially beneficial as one-third of the proceeds went to the museum.

A new addition to the museum is a collection of model military war airplanes donated by John Jessesski. This detailed collection includes every war plane beginning with World War I to present day war planes. Mr. Jessesski, who has ties to the Minto area, made all of the planes. We encourage everyone to come and see the display this coming summer.

School tours and Sunday openings kept the museum active from May through September. We ended the year with our annual chili contest in early November. This fundraiser was again a great success.

We were saddened this year by the loss of two wonderful board members, Karen Farder and Henry Czapiewski. Both did so much for the museum and they will be deeply missed.

The current officers and board members are as follows: Curator/



Karen Farder



Henry Czapiewski

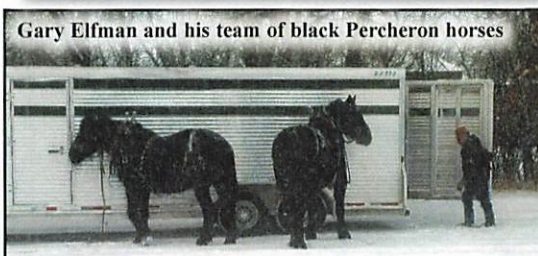


Collection of model military war airplanes by John Jessesski on display at Museum Alive.

Manager – Wally Ebertowski and Kathy Langowski, chairman – Larry Jamieson, vice chairman – Jared Peterka, secretary – June Selseth, and treasurer – Ron Ophaug.

Board members are Chris Misialek, Cindy Jamieson, Doug Ulland, Les Jallo, John Gudajtes, Keith Shutt, Tim Nelson and Mike Farder.

HERITAGE: Continued from page 1



Walsh County Heritage Village

Heritage Village was closed for the winter, reopening April 1, 2013. Several functions took place at the village this year. April 13 there was a rummage sale in the theatre building, a fish fry on April 19, pancake and sausage breakfast on the 28th. May 23 Valley Cruisers Car Club held their Show and Shine in the parking lot with a supper in the theatre building. June 14 was a 50th wedding anniversary celebration for Bill and Joyce Kingsbury, fish fry on June 27, and SummerFest on the 29th. Lots of food vendors were on site, Valley Cruisers Car Club Show and Shine, Games to Go for kids, bake sale, lunch in the theatre building, and lots of merry-go-round rides for the kids. Actually we gave 682 merry-go-round rides. All the buildings were open for tours and Gordy Bracken was in charge of selling sasparrilla in the saloon. We also entered a float in the parade. Fun was had by everyone. Sunday, the 30th, there was a reunion for the Greg Mattson family. August 1 there was a memorial lunch in the theatre building for Jana Lindblad and August 2 there was a rummage sale. September 1 was a baby shower, and a pancake and sausage breakfast was held on September 22. October 11 there was a birthday party, November 28 there was a family Thanksgiving gathering in the theatre building, and December 7 was the fire department Christmas party.

Taste of the Holidays was held on December 14. This event was a huge success. Gary Elfman of Warwick, ND, brought his 11-year-old team of black Percheron horses pulling a sleigh giving visitors rides throughout the day. This event was sponsored by the Walsh County Historical Society and hosted by Heritage Village. Despite the sub-zero temperature sleigh rides went from 12:15 p.m. until 4 p.m. There were more than 200 children and adults that enjoyed these rides. There were games for the children inside the theatre building, several door prizes and a visit by Mr. and Mrs. Santa Claus. There were countless volunteers who brought ethnic goodies to share with those who attended. Entertainment was also provided by the PNA Youth Polish Dancers, the Grafton Lutheran Church Youth Group, and Tammy Henriksen who sang Christmas music and led the program. There were several Christmas trees decorated in ethnic theme, children's themes, and many other decorated trees. Thank you to everyone who decorated trees, brought food, worked in the kitchen, and helped in any other way.

A group of men from the Grafton Lutheran Church volunteered their time to paint the front steps and the back ramp of the Shoultz house. Thank you very much.

Current board members are Ken Hoffmann, president; Gordy Bracken, vice president; Pam Johnson, secretary; and Verna Aasand, office manager/treasurer. Board of Directors: Norman Paulson, Marlene Paulson, Vernon Russum, Brian Weisz, Jean Bodmer, Todd Morgan, Carol Spale and member at large, Greg Amb from Developmental Center, ISLA.

Our theatre building is always for rent for anything you would like . . . rummage sales, showers, reunions, graduation, etc. No alcohol is allowed. You may call Ken at 701-360-0088 or Verna at 701-520-1207 to reserve your special date.

Remember! We are always looking for volunteers.

Heritage Village wants to thank everyone who participated in any way to carry out this year's activities and to all those who gave donations. Continued support from the community and individuals is needed to continue the perseverance of Heritage Village and Jugville. We hope to see you all in 2014!

Submitted by Verna Aasand



Grafton Lutheran Church men volunteering to paint. From left, Pat Sevigny, Wally Olson, Don Hutson, Ron Thompson, Pastor Chris Gaule, Lloyd Thompson, Ron Ophaug, and Jim Rystedt.



From left, Ron Thompson and Don Hutson painting the front steps of the Shoultz house.



Grafton Lutheran Church men volunteering to paint the back ramp of the Shoultz house.

WCTU Drinking Fountains Now and Then

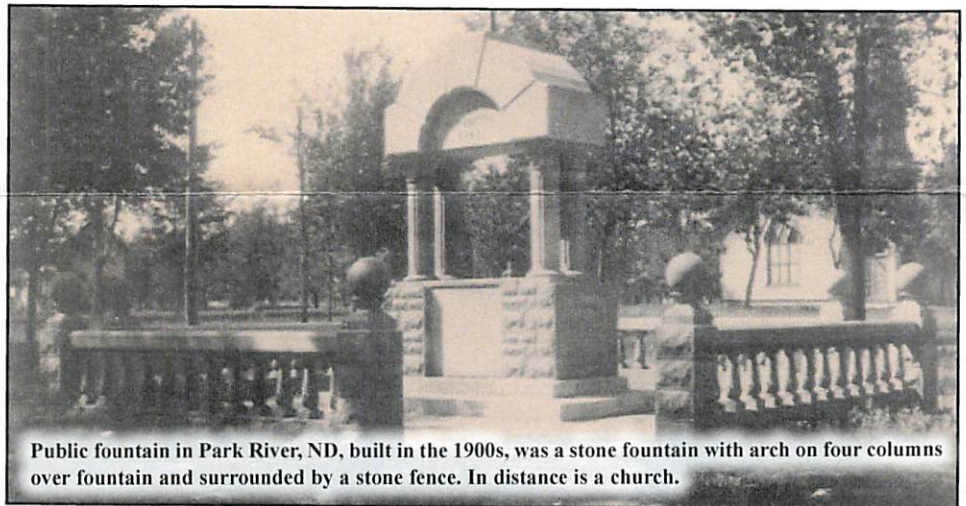
At the 1874 organizing convention of the National Women's Christian Temperance Union, the members were urged to erect drinking fountains in their towns so that men could get a drink of water without entering saloons and staying for stronger drinks. Often the drinking fountains that were erected offered a place for horses to drink, another place for dogs, and of course, a place for humans to drink.

Many of the fountains erected by local WCTU Unions are still in existence – some still giving water; and a number have been restored within the last few years. A few remain in their original location, but many have been moved to parks or other public spaces.

Submitted by Doug Weberg



Fountain today in Park River, ND.



Public fountain in Park River, ND, built in the 1900s, was a stone fountain with arch on four columns over fountain and surrounded by a stone fence. In distance is a church.

History of the Walsh County Fair

Northeastern North Dakota Winter Fair was held in Park River, ND in March of 1914. It was sponsored by F. Hathaway, the new county agent for Walsh County. Later, it was held in the Walsh County Agricultural and Training School in Park River. E. J. Taintor was superintendent of the school and county agent starting in 1924. The fair grew by leaps and bounds due to the large number of volunteers that Taintor requested to help. The fair was held in the Walsh County Agricultural High School until the gymnasium was built in 1927, giving the fair much more room.

In 1932, the North Dakota State Potato Show was added to the fair. The potato show was local until that time. The fair exhibits were potatoes, wheat, durum, flax, barley, corn, field peas, alfalfa seed, sweet clover seed, Hungarian hay, alfalfa hay, sweet clover hay and silage, a one day colt and filly horse show, but no grown up horses. Since the beginning, the women have been active in the fair with each Homemaker's Club competing with one another for ribbons and prizes. The Walsh County Homemaker's clubs were a part of the state and national organization. They exhibited dairy products and eggs, canned vegetables, fruits, and meats, cake, cookies, clothing of all types sewn

at home, home decorations, rugs, quilts, luncheon sets, pillowcases and many other items. The Junior Show included nightgowns, dresses, needle work and canned goods.

The fair continued until World War II was in full force. The fair was discontinued in 1942. Ervin Hagen was county agent from 1944 until 1946. The fair was reorganized in 1946 with Lyle Currie as county agent. The fair was named Walsh County Midwinter Fair and North Dakota State Potato Show. In addition to the other exhibits, the Walsh County Wildlife Club put up a large wildlife exhibit taking up one-half of the gym with live and mounted birds and animals surrounded by walls made of donated old Christmas trees.

The fair was held in mid-February, but to accommodate the 4-H and FFA achievement days, the fair was changed to October and included livestock exhibited by the youth. Two large Chautauqua tents were brought in from Minneapolis to house the livestock show and calf scramble. A herd of spring calves were turned into the ring and 4-H and FFA students who caught and put a halter on a calf kept the calf until the next year's fair as their project. On the last day of the fair, a 4-H and FFA livestock sale was held.

FAIR: See page 5

125th anniversary celebration held June 23, 2007 in Pisek

Pisek, ND held their 125th anniversary celebration on June 23, 2007. The day started with a parade at 10:30 a.m. that lasted more than one hour with over 100 units. Entries arrived from the several surrounding communities.

The Pisek St. John's Nepomucene Church and Altar Society served a traditional Czech meal of pork roast, potato dumplings, sauerkraut and kolache at noon serving 430 people. In addition, there were food vendors, Hammer Concession of Fairdale and George's Concession of Langdon along with J-Mart had a booth selling submarine sandwiches and sweet rolls.

There was an antique car show, motorcycle show and an antique tractor show. An open house and tour of the former Pisek school was held from 2:00 to 4:00 p.m. Two dances were held: old time dance with music by Cathy Erickson in the hall from 4:00 to 8:00 p.m. and a street dance from 9:00 p.m. to 1:00 a.m. featuring music by Identity 5. An estimated crowd of 1,500-2,000 attended.

The new City Shop on Main Street held 3 booths. Items from the Czech Republic featured were crystal glass and jewelry with Dave and Margaret Swartz in charge. A second booth with The 3 Crazy Ladies, Marguerite, Judy and Penny selling pies, jams, jellies and kolache. A third booth sold Watkins products by Dorothy Shereck. Kathy and Larry Baker held a toy and hobby show in the old American Legion building.

Preparations for this celebration started 1-1/2 to 2 years earlier with fundraising selling tickets for a Terry Redlin print. There were two spaghetti dinners prepared and furnished by the Top Hat, also an egg bake brunch furnished by Top Hat and served by Bob Thomson and his helpers.

The money raised and donations from area businesses paid expenses such as the cost of the two dance bands plus advertising and toilet rentals.

The officers and chairs for this celebration were: Terrance Peterka, chair; Wanda Sarkilahi, secretary; Don and Marge Praska, treasurers; Clair Greicar, parade; Kathy Baker and Wanda Sarkilahi, fundraisers; Barbara Greicar, St. John's Nepomucene pork dinner; Ginger Peterka and Rebecca Hodgson, horse and pony rides; Aileen Jelinek, church tour and history of Alfons Mucha painting; Terrance

Peterka, antique car show; Francis Peterka, motorcycle show; Leslie Peterka, antique tractor show; Sherry Dusek-O'Toole, advertising banners for city of Pisek; Donald Greicar, cleanup; Francis Jelinek, car parking; pork was cooked by Jeff Soukup; bouncy balloon and face painting by Sunshine Center of Park River; Tempera Tattoos by Violet; karaoke, Cindy Hammer; DVD of the celebration, Marge Praska; beer gardens and street band, Curt and Wanda Sarkilahi; Cathy Erickson Band, Dan Praska; and J-Mart and Top Hat sponsored an air drop of plates for children by Sobolik Air Spray.

Pisek, in English means "sand." There is a sandy ridge left by the glacier that formed Lake Agassiz when it stopped moving, dropping sand and rocks.

Pisek was established in 1882 when many Czech and Moravian families settled in the area. Most of these came from northeast Iowa and southeast Minnesota, with some coming from the Prairie du Chien area of Wisconsin. These all came originally from Bohemia in what is now the Czech Republic.

The first school was built in 1882. The Great Northern Railroad opened its line to Park River in 1885 and in 1886 or 1887 built a stockyard in Pisek where anyone selling cattle could load them directly into the box cars. The first grain elevators were built in 1886. The post office was opened June 8, 1887, along with a hotel and livery barn. In the same year, the first store built was a General Merchant store. Also, the first hardware store came in 1889, and in 1894 flour milling was started and operated until 1914.

The first school was used as a church in May 1884. In 1886, Pisek became a Mission and the first church was built. In 1887, the church was blessed and the name St. John Nepomucene was chosen. The current church was built in 1892.

The remaining proceeds from the celebration, after expenses, were donated in 2007 to a Veteran's Memorial, which now stands north of the American Legion building.

On behalf of our community, thanks to everyone that came and helped us celebrate our 125 years!

Compiled by Marie Greicar

FAIR: Continued from page 4

Because of the large turnout of youth, the fair board felt a need for a permanent structure so the big fair building was built in 1951 and was paid for by public donations. At this time, they started the Little International Livestock Show in the evenings. They select animals for grand champion and reserve champion as the best animal in each class. After the judging of the animals, there is a contest for how well the participants show their animals before the judge, and how well they are groomed and trained. There is a champion showmanship person selected in each class. The finale is the champion showman from each class competing by showing each other's animals. A grand champion showman is then selected. Each participant gets a ribbon. The fair continued to expand and the North Dakota State Potato Queen contest started in 1953 with Dorothy Bina as the first queen. In about 1958, the Park River Jaycees sponsored the North Dakota State Potato Queen in the Miss North Dakota Pageant held in Bismarck. The potato queen contest was discontinued in the 1980s.

In 1954, Bob Armstrup was named county agent and a large addition was added to the front of the fair building for women, 4-H, and youth exhibits. Women entered canned goods, clothing, handiwork, quilts and many other projects. The 4-H projects were woodworking, baking, sewing, artwork and photography. A number of display cases for food exhibits were added because some of the baked goods were taken by kids before they were judged.

The next year, a pole barn was built on the west side of the fair building to house cattle and horses. A smaller pole barn for swine, sheep and poultry exhibits was built on the east side of the fair building. The

fair was expanded from three to five days with a horse show and potato picking contest.

Wayne Grinde became the county agent in 1965 as the fair continued to expand. The Chris Midgarden Arena was built during this time. Chris was president of the fair from 1928 until 1942 and again from 1946 until 1951. It has a large lunch area and a large room for commercial booths. With the inclusion of the commercial booths into the fair, more entertainment and education booths brought in more interested people.

Wayne Grinde retired in 1992. Brad Brummond became the county agent for Walsh County in 1992. Some changes in the fair were the discontinuance of the grains and potato classes of the show and some expansion of youth exhibits. Bull-O-Rama, a commercial company, brought in bulls and professional riders that competed for points in the National Bull Riders Association. It provides a lot of excitement for large crowds that attend in the arena. Pedal Tractor Pulling contest for children and Pinewood Derby for the cub scouts are held each year in the Chris Midgarden Arena.

The fair has continued to be mostly about youth in 4-H and FFA, and it continues to this day as the largest county fair in North Dakota without a midway or carnival.

Since the beginning of the fair until today, it has been the county agent, the home extension agent, and the office staff that has been the ones to keep it going and improving. All of them have done a super job. The large number of volunteers make it all work for a successful fair the past 100 years.

Submitted by Nels Midgarden

Non-Profit U.S. Postage PAID Grafton, ND Permit No. 12

**2014 Walsh County Historical
 Society Officers**

Vernon Russum President
 Les Jallo Vice President
 Pam Johnson Secretary
 Joe Koehmstedt Treasurer

Board Members

	1-Year Term	
John Gudajtes	Larry Jamieson	Keith Shutt
	2-Year Term	
Doug Weberg	Bob Vaudrin	Chris Misialek
	3-Year Term	
Harlen Bjerke	Wally Ebertowski	Dennis Markusen

Jean Bodmer/June Selseth Newsletter
 Jean Bodmer Membership

Membership Rates

For Life Membership:
 74 Years and Younger \$100.00
 75 Years and Older \$50.00
 Annual Regular Dues Per Person \$10.00
 5-Year Membership Per Person \$25.00

CENTURIANS

Nursing Home

Clara S. Thompson	101
Christine Hall	104
Verna Gerszewski	105
Esther King	102

Apartments

Gladys Baier	100
------------------------	-----

2014 Walsh County Museum Officers

Curator/Manager Wally Ebertowski and Kathy Langowski

Officers

Chairman Larry Jamieson
 Vice Chairman Jared Peterka
 Secretary June Selseth
 Treasurer Ron Ophaug

Board Members

Mike Farder	John Gudajtes	Les Jallo
Cindy Jamieson	Chris Misialek	Tim Nelson
Keith Shutt		Doug Ulland

2014 Heritage Village

Board Members

Ken Hoffmann President
 Gordy Bracken Vice President
 Pam Johnson Secretary
 Verna Aasand Office Manager/Treasurer

Directors

Jean Bodmer	Todd Morgan
Marlene Paulson	Norman Paulson
Vernon Russum	Carol Spale
	Brian Weisz

Greg Amb Member at Large

Attention

The membership renewal forms, which are enclosed in this newsletter, go out to all members. If you are a life member, or 5-year membership, please disregard this invitation to join. Thank you.