

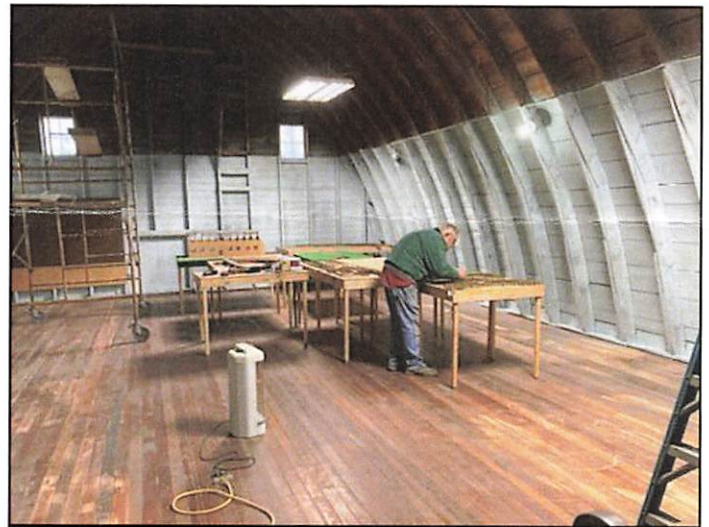
Heritage Village had a very busy and successful year with numerous guided tours being held. The Main Building was the site for holiday, birthday and anniversary celebrations, vendor shows, Christmas parties, and fundraisers. Heritage Village again was the host for the Grafton Farmers Market and co-hosted National Night Out with the Grafton Police Department and the Grafton Area Chamber of Commerce.



Daryl Campbell and Ed Matthiesen

Landstad Church: Installed double entrance doors, repaired and painted the deck. Two crosses that were donated by Mike Schmidt will be installed on the doors in the spring.

Barn: The upstairs was cleaned and painted; the electrical system was rewired; new lighting was installed; and shelving and tables for an extensive O gauge train set donated by Ed Matthiesen were installed.



Larry Gunderson working on new train display



Updated Library

The train set includes 5 locomotives, more than 30 cars and over 250 feet of track. This spring we will finish the train set display and will clean out the main floor. We are looking for financial donations to install a wheelchair lift to the second floor of the barn.

Depot Building: Removed bathroom and office. The space will be used to expand the Military displays in the Spring.

Library: Started the process of installing shelving donated by Grafton True Value. The shelving is being cleaned, repainted and installed. A beautiful, 6' x 14', oak table to be used by visitors for research was donated by the headquarters of the First Community Credit Union in Jamestown. The building was rewired, and new lighting installed..

Uncle Sig: Rebuilt, shingled, and painted water tower built and donated by Uncle Sig. It will be installed for display this spring on the East end of Jugville.



Original Jugville Water Tank



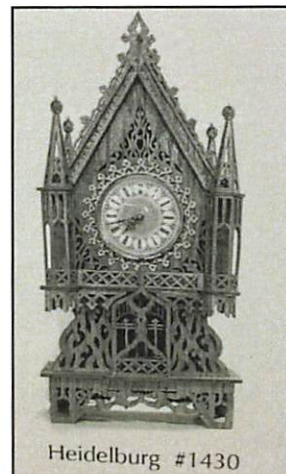
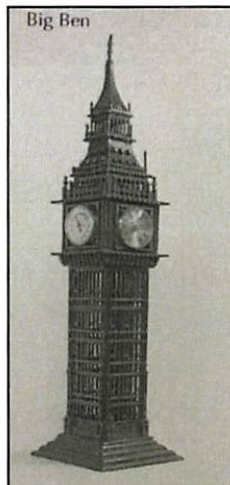
Updated Jugville water tank

Ole's Building: After completion of upgrades to the building we will move farm equipment and vehicles back onto display.

The Heritage Village Board of Directors would like to thank all of our volunteers who donated their time, effort and expertise. We are truly grateful for everything you have done and continue to do. Heritage Village is very grateful for everyone who has donated artifacts or contribute financially. Without these donations we would be unable to continue to preserve, display, and educate our visitors on the history of Walsh County.

If you would like to schedule a tour, donate or volunteer please contact: Daryl Campbell (701) 520-4095 or Larry Gunderson(701)331-2546.

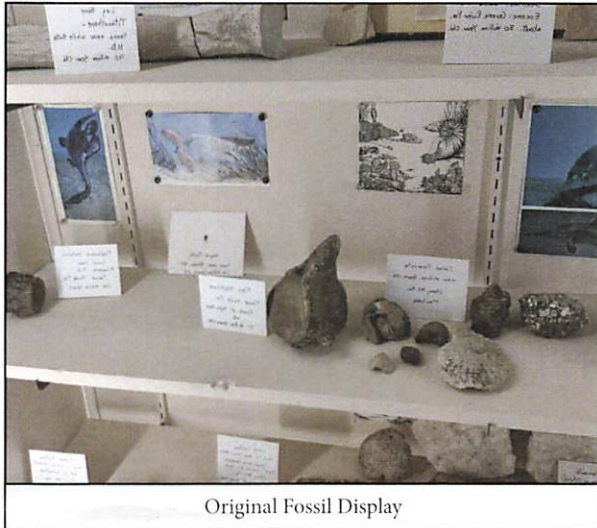
More than forty ornate clocks built by Uncle Sig, that were previously willed to UND were donated to the Heritage Village and will be displayed in Uncle Sig's Museum Building. The pictures are of two of the clocks donated.



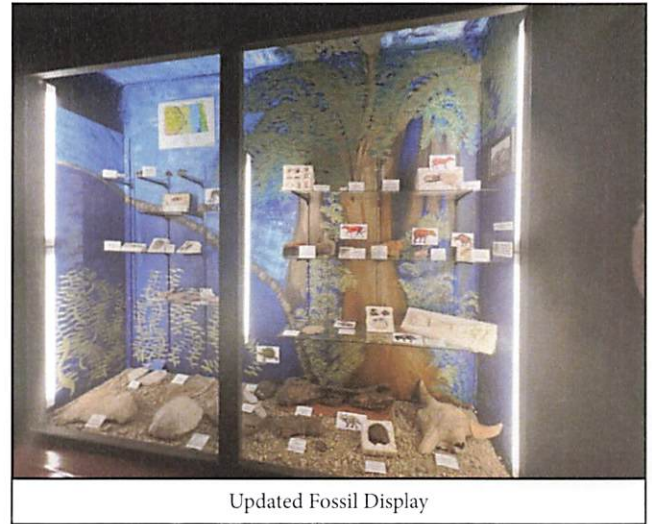
Walsh County Historical Museum

2023 at the Walsh County Historical Museum was a busy year. We gave a lot of tours, made many improvements to the buildings and displays, we honored long-time supporters, and introduced the Museum and our mission to others.

One of the most visible updates is our fossil display. Our original Fossil Display was donated and designed by Ted Holberg. The updates are a beautiful mural painted by Phoenix Painting LLC, new shelving, labeling, and with the assistance of the Minto High School DECA and the North Dakota Geological Society the fossils were removed from the existing display, cleaned and identification confirmed.



Original Fossil Display



Updated Fossil Display

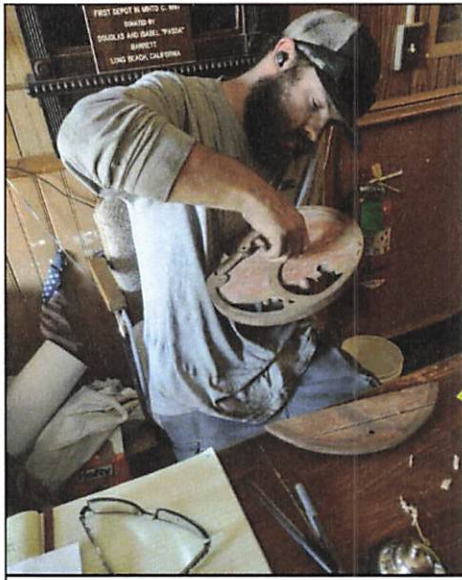
2023 was a very busy year for tours: tours from the Minto Public School All Class Reunion, family reunions, school tours, and individuals. These are frequent comments we hear from our visitors. “This is a great museum!” “I can’t believe all of what you have on display!” “This is the best museum I have ever been to.”



One of the groups who visited us.

We wouldn’t be able to accomplish any of our goals without our great volunteers and donors who are generous by volunteering their time, money and expertise. One great example is everyone who supported us by participating in our yearly chili contest. It is a fun and rewarding event with all of the different types of chili, people sampling, and volunteers who work to make it successful.

Volunteers assisted us by utilizing their skills with collecting, installing, and maintaining our displays. If you would like to donate or volunteer please contact any Museum member, Shannon Brazil, or Wally Ebertowski.



A volunteer getting an artifact ready for display



Winners of our annual chili contest

Some of our future projects that we are looking forward to finishing this coming year: putting a new roof on the Trapper's cabin, new siding and roof on the gym, a new stand for the smooth bore cannon, and new windows in the Forest River Township schoolhouse.

We at the Walsh County Historic Museum are proud to be part of a group of Walsh County residents who preserve, present, and educate our visitors on the wonderful history of Walsh County and the surrounding area. If you are interested in participating, please contact Shannon Brazil(701)215-3420 or Wally Ebertowski (701)248-8009.

Walsh County Historical Museum

323 3rd St

Minto, ND 58261

Open: Third week of May thru Second week of October.
Every Sunday or by appointment.

For tours or to make a donation contact:

Shannon Brazil(701)215-3420

Wally Ebertowski(701)248-8009

St. Catherine's Church Lomice

Saint Catherine Church, Lomice was established on Jul 17, 1934 by Joseph Vitek (1886-1949) The land the church was established on was donated by a local family. The church and accompanying grottos are constructed of fieldstone found on surrounding farmland. The local Czechoslovakian immigrants brought the stone and assisted with the construction of the facility. Was added to the National List of Historic Places on 2006.



Families of the founders enjoying a presentation from the Walsh County Historic Preservation Committee member Agatha Frisby at their annual picnic



Interior of the church

Membership

Below is a copy of the new membership application. You will notice there are new rates. Annual Dues is \$25 and Life Membership is \$100. If you know of anyone interested in membership please contact any board member.

Walsh County Historical Society

Membership Application

**Annual membership dues run from:
January 1 to December 31**



ANNUAL MEMBERSHIP RATES:

Annual Dues \$ 25 per person
Life Membership \$100 per person

**YOUR SUPPORT HELPS SUSTAIN OUR SOCIETY
THANK YOU!**

Tear off here and return lower portion to:

**Walsh County Historical Society
PO Box 469, Grafton ND 58237**



Name _____

Address _____

Email Address _____

Amount Paid _____

Additional Donation _____

Please make checks payable to Walsh County Historical Society.

Collaboration to preserve Walsh County History

The Walsh County Historical Society and the Walsh County Historic Preservation Commission have been collaborating to promote and preserve the historic stories, artifacts and buildings of Walsh County. Some of the activities are a booth at the Walsh County fair that was staffed by volunteers from the Walsh County Museum, Heritage Village, Historical Society and the Preservation Commission. The displays, artifacts, and volunteers were used to promote and educate the missions of the entities and facilities.



Display at the Walsh County Fair

The Walsh County Historical Society and Preservation Commission also collaborated to create a new website for the promotion and education of the history of Walsh County.

The website address is: www.walshcountyhistory.com

The website provides access to pictures, documents, and other resources such as the complete Walsh County Heritage books, contact information for all of the entities and facilities that are under the purview of the Walsh County Historical Society and the Walsh County Preservation Commission.



Homepage for the Walsh County Historical Society website

Walsh County Historical Society
 15304 Highway 17
 Grafton, ND 58237

Non-Profit
 U.S. Postage
 PAID
 Grafton, ND
 Permit No. 12

Tracy Laaveg
 PO Box 127
 Park River, ND 58270

Historical Society Officers and Board
 Officers

President Steven Novak
 Vice President Shannon Brazil
 Secretary Tracy Laaveg
 Treasurer Larry Gunderson

Board Members

	1-Year Term	
John Gudatjes	Larry Jamieson	Jarod Peterka
	2-Year Term	
Shannon Brazil	Charles Thompson	Chris Misialek
	3-Year-Term	
Wally Ebertowski	Larry Gunderson	Dennis Markusen

Heritage Village
 Officers

President Daryl Campbell
 Vice President Larry Gunderson
 Secretary Linda Restemayer
 Treasurer Julie Campbell

Board Members

Shirley Burns	Jeanne Droske	Todd Lerol
Marlene Paulson	Norman Paulson	Chad Ruzicka
Al Sieben	Ron Thomas	Bob Zidon

Walsh County Historical Museum

Curator/Managers

Wally Ebertowski Shannon Brazil

Officers

President Keith Shutt
 Vice President John Gudjtes
 Secretary Cindy Jamieson
 Treasurer Mike Farder

Board Members

	1-Year Term	
Dexter Sitzer (2025)	Tim Nelson (2025)	Steve Novak (2025)
	2-Year Term	
June Selseth (2026)	Jared Peterka (2026)	Lucas Mondry (2026)
	3-Year Term	
Josh Miskavige (2027)	Larry Jamieson (2027)	Doug Ulland (2027)

Visit Walsh County Historical Society Website:
www.walshcountyhistory.com