

# W

# WALSH COUNTY HISTORICAL SOCIETY



FEBRUARY 2002

WALSH COUNTY HISTORICAL SOCIETY NEWSLETTER

## Historical Society Begins 35th Year 1967-2002

The Walsh County Historical Museum in Minto will open again in 2002 with five new added attractions: a bald eagle and new displays for the lone wolf, farm tools from the 1800's, one-bottom ox drawn plow, and a hearse.

The bald eagle will be found in the wildlife room on the lower level with the polar bear and musk ox. The lone wolf, tools and ox drawn plow will be located in the north end of the gymnasium, and the hearse will be located in the center of the gym. These are beautiful displays and murals that all of you will enjoy seeing.

The year 2001 was very busy with construction of the five displays and repair of half of the roof of the main building. In 2002 we will finish the roof repair and add new siding to the gymnasium. This will give us a new look for the 2003 Museum Alive festivities.

The officers for 2002 are:

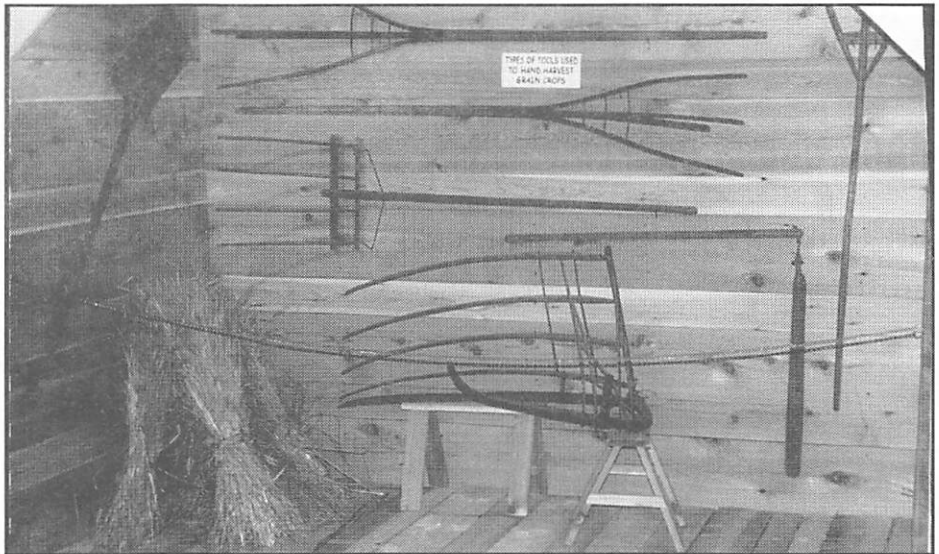
Curator-Manager . . . . . Frank Schiller  
Chairman . . . . . Les Jallo  
Vice Chairman . . . . . Wally Ebertowski  
Secretary . . . . . June Selseth  
Treasurer . . . . . Ron Ophaug

### Board Members

Chris Misialek  
Kathy Langowski  
Marlene Swenson  
Kurt Kelley,  
John Gudajtes  
Theafil Kilichowski  
Henry Czapiewski  
Gloria Koltes



Bald Eagle



Early Harvest Implements

## ~ Centenarians in Walsh County ~

Isabel Klave, Minto, age 100, born Oct. 29, 1901, resident at Lutheran Sunset Home, Grafton.

Lillian Torblaa, Grafton, age 100, born December 25, 1901, resident at Lutheran Sunset Home, Grafton.

Frank Wysocki, age 102, born January 13, 1899, lives with his son Francis in Minto.

Ingeborg Erickson, Adams, ND, age 102, born November 1, 1899. Resident at Good Samaritan Home, Park River. (Ingeborg died January 16, 2002)

# Village Happenings

"Picture Your Heritage" was the theme for the 7th annual By-Gone Days on September 9 at the Village in Grafton. A noon lunch was served - hot turkey on a bun, macaroni salad, beans, cake and ice cream. There was musical entertainment during lunch.

"Rock 'N Roll Heaven" a group of Grafton men, were the featured afternoon entertainment on the outdoor stage. Janet Fedje and children also provided musical selections. Dale Peterson was M.C.

A flea market, displays, sale of arts and crafts, pets, demonstrations and open houses at various buildings filled the afternoon with fun.

The log cabin was moved unto a cement slab. The cost was approximately \$6,000.

There was work on the loop road, trees and drainage in west addition.

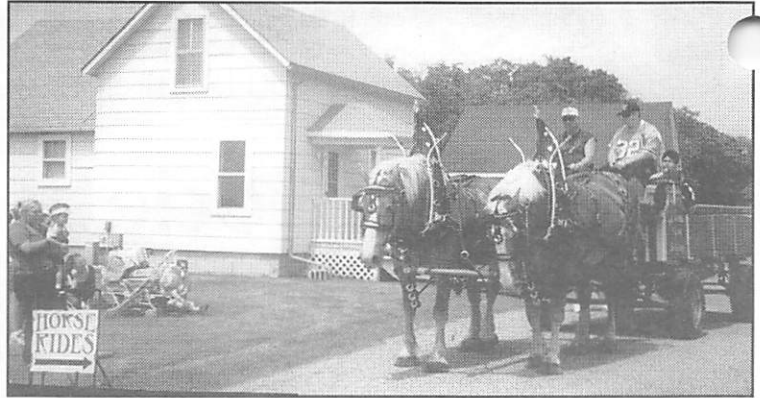
Painted part of main street (post office and saloon), and worked on other buildings as well.

The flag pole that was on the top of the dome at Grafton Drug on Hill and 5th St. was donated to the Village by the late Florian Wosick family. Florian helped dismantle the pole in the 1950's.

Many activities and events are held during the year and the theatre building is available for rent.

## HERITAGE VILLAGE BOARD

Manager .....C.W. Jacobson  
Chairman .....Ray Campbell  
Secretary-Treasurer .....Verna Sherek  
Directors are: Warren Wilson, Ralph Adamsen, Paul Ensrude, James Gaustad, Chuck Lambrecht, Barb Bracken, Jean Bodmer, Ron Rasmussen, Norv Elbert, Rich Lapp, Harold Blanchard and Rosemary Fisher.



This howitzer was placed on a cement slab at the village in the fall of 2001. It was donated by the U.S. Army and had been stored in Lexington Kentucky. It was restored by the N.D. National Guard in Devils Lake. It was used mainly from 1940- 53 and 10,202 were built and supplied to 46 different armies. (Donations were received to cover the cost of this project.)

## Activities at Elmwood

It was a little quieter this past summer but Elmwood was again the scene for several bridal showers, groom's dinners, birthday parties, graduation gatherings and group meetings. Tickets for the Mother's Day Tea held in May are always in great demand.

The Sunday afternoon Band Concert during Summerfest is drawing more former band members each year. Don Laberge, Les Anderson and Ina Raumin are the ones to contact. The old music is still available and instruments can be found. The participants and those who come to enjoy the music share many memories at this gathering.

Spencer's Spaghetti Supper is always held the second Tuesday in November. This year, because of the World Trade Center disaster the patriotic red, white and blue decorations used only in election years were proudly displayed. The success of this event is due to the efforts of many volunteers from the community. The funds raised are key to the ongoing upkeep and restoration of the beautiful victorian home.

Each year, with the help of many friends, all the rooms at Elmwood are decorated for the Christmas season. This year the century-old home glowed with hundreds of lights, many trees, wreaths and garland. "O Christmas Tree" was the theme for Christmas at Elmwood in 2001. Guests enjoyed a delicious lunch, a program of Christmas legends and traditions and the beautiful songs of the season were sung by Loretta Moe, Margery Johnson with Mary Jo Hall at the piano. Prince Albert, Queen Victoria's husband, from Germany is credited with introducing the pine tree

decorated at Christmas time to England. Victoria, who was only eighteen when she became queen, married Albert in 1840. They had nine children and after Albert's death in 1861, Victoria continued as queen until 1901, a reign of sixty-four years. The Victorian Age still influences our lives today.

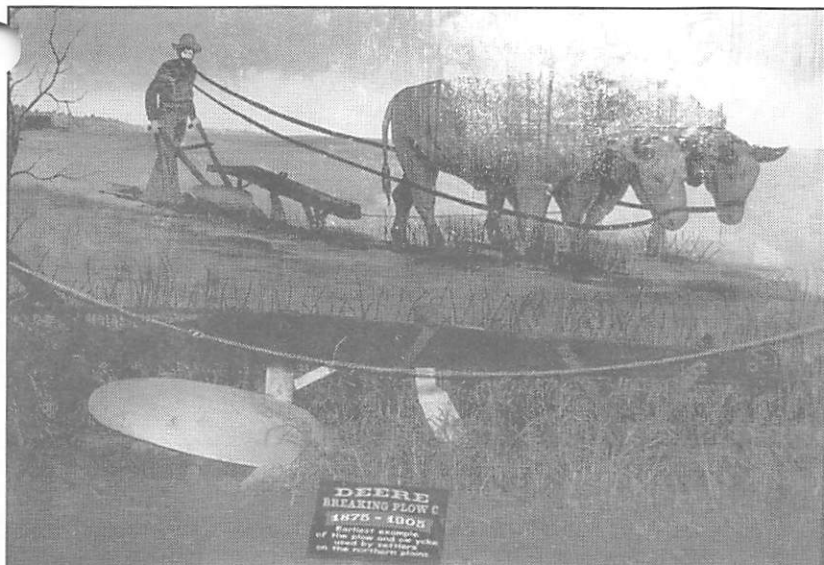
Leora Mathern, who faithfully served on the Elmwood board for nine years moved to Maple Lake near Glenwood, Minnesota in June. Her husband's job required the move and it allows them to live closer to their family. Leora worked with the After School Program here and found they could use her in the same program in Glenwood. She also has opened a booth called "Attic Treasures" in the Memory Mercantile Building in Lowry, Minnesota.

Elmwood is possible only because of the effort and interest of many people. Gloria Thompson, Ina Raumin, Mary Jo Olson, Beth Rose, Pat Offutt, Jackie Midgarden, Lori Johnson and Judy Evens serve as a board. Eleanor Iverson is the treasurer; Beth Sundberg is available as a caterer; Stanley Langowski is the carpenter and has done much of the restoration work and Chad Ruzicka is assigned to maintenance.

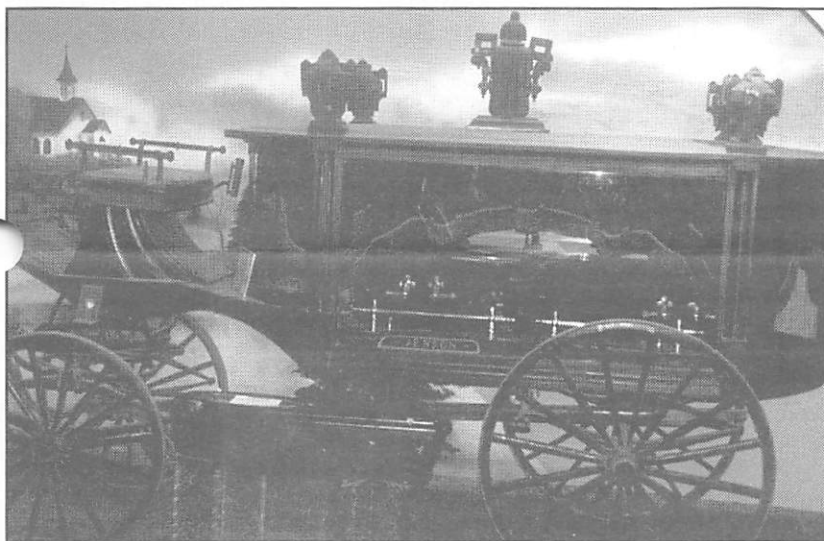
Elmwood is a gift from the Luther Williamson family to the people of North Dakota and is managed by the North Dakota Parks and Recreation Department. It's history reaches back to the 1880's with ties to the state, county and city.

Information on renting Elmwood is available from members of the board.

# SCENES FROM THE COUNTY MUSEUM



Plow and Oxen



Glass Enclosed Hearse

## NORTH DAKOTA

*You may talk about your east coast,  
From Florida to Maine,  
Or, think you like the west coast,  
With it's quakes and floods and rain.*

*Oh, you have your orchards,  
And your oceans broad and blue,  
Your mountains and your valleys,  
Of many colored hue.*

*But when the Great Creator  
Saw the work that he had done,  
He thought that He should make a place,  
And combine all good in one.*

*So, He took rich soil and water,  
And made the fertile plain,  
Instead of billowing ocean,  
He made fields of golden grain.*

*To this He added seasons,  
Of summer, fall and spring,  
And called in North Dakota,  
The land of everything.*

*Now, you may think our winter time  
A trifle too severe,  
But can you dress for quakes and floods?  
As we dress for winter here?*

*Yes, you can have your mountains,  
And your oceans broad and blue,  
Just give me North Dakota,  
With its winter season too.*



## Elmwood Ladies

Front Row:  
LuAnn Kotnik, Mary English, Lynnete Moe

Back Row:  
Susie Geiger, Pam Oosterwijk, Mary Jo Hall, Claire Lorinser

## MEMBERSHIP

**NOTICE:** Life members as well as those who have already paid receive a packet for renewal - as does everyone. Ignore it or better yet, give it to a friend to become a member. The membership cards are to be signed by the recipient and retained.

There were five new life members in 2001 - Jevon Aasand, Mae Curran Alm, Brandon Brazil, Douglas Minski and Luke Lutovsky for a total of 107.

There were also 190 regular and 14 business memberships.

\*\*\*\*\*

Three life members died in 2001: Ted Wylot, Jevon Aasand and Henning Shelquist.

Two centenarians: Ann Kelly and Opal Gemmill.

The Walsh County Historical Society has received inquiries from people interested in volumes #1 and #2 of the Walsh County Heritage books.

Reprinting books #1 and #2 is under consideration. This will depend upon interest shown.

If interested please contact a Walsh County Historical Society officer, Elizabeth Fagerholt or Ora Marie Stewart, Grafton.

## TIME TO RENEW 2002 MEMBERSHIPS

We would appreciate it very much if you would take a few minutes of your time to mail your annual dues. We are enclosing your membership card for 2002.

ANNUAL REGULAR DUES..... PER PERSON \$5.00  
 ANNUAL BUSINESS ..... \$10.00  
 LIFE MEMBERSHIP..... \$100.00

Your support helps sustain our Society.

Ora Marie Stewart  
 Membership Chairperson  
 Walsh County Historical Society  
 131 Prospect, Grafton, ND 58237  
 Editor - Lorraine Paulson

## 2001 Historical Society Summary

The annual meeting of the historical society was held at the Heritage Village the last Sunday in February. In April the meeting was held at Elmwood. The last Sunday in July the meeting was held at the General Store in Edinburg and lunch was served in the little museum in the city park. On August 15 a general membership meeting was called and held at the village to discuss Elmwood and its part in the historical society. During the year, several executive board meetings were held. On August 28 an old-fashioned church service in honor of departed friends and relatives was held in Landstad Church at the village followed by lunch in the theatre building. The last meeting of the year was held on October 28 at the Heritage Village.

### 2001 OFFICERS AND BOARD

President ..... Ora Marie Stewart  
 Vice President ..... Charles Wilson  
 Treasurer ..... Marian Hajicek  
 Recording Secretary ..... Rae Desautel  
 Corresponding Secretary ..... Lorraine Paulson  
 Membership ..... Ora Stewart  
 Ex Officio ..... Chris Misialek

### DIRECTORS

Delaine Peoples, Edith Harris, Bob Vaudrin, Gordon Bracken, Paul Westby, Maureen Setness, Gloria Koltjes, Frances Seeba & Charles Wilson. (Leo Feltman replaced Charles Wilson when he became vice-president due to the resignation of John Curran.

### 2002 NEW OFFICERS

President ..... John Gudajtes  
 Vice President ..... Jean Bodmer

### NEW DIRECTORS

Paul Ensrude, Jim Kjelland, Charles Wilson

## Historical Society Urges Yes Vote

Petitions have been signed to place the mill levy for the Walsh County Historical Society on the June primary ballot. A yes would increase the levy from one-quarter mill to three-fourths mill.