



W

WALSH COUNTY HISTORICAL SOCIETY

JANUARY 1999

WALSH COUNTY HISTORICAL SOCIETY NEWSLETTER

5th Annual By-Gone Days salutes the senior citizen



Attending 1998 By-Gone Days were, left to right, Cora Paulson, 95 years of age and Ethel Brekke, 90 years of age with Charles Stewart (center).

The theme of the 1998 By-Gone Days was "Drifting through the Decades," with a special salute to area senior citizens. The Grafton Fun Tones were on hand to play old-time tunes, the Grafton Legion raised the colors and a program featuring a mix of music and Walsh County historical tidbits from years 1900 to 1950 was written by Ora Marie Stewart and presented by Karen Anderson and Steve Eckman.



All dressed up for By-Gone Days — Front, left to right: Lindsey Johnston, Lore Paulson, Amy Tallackson. Back: Ora Marie Stewart and Collette Lessard.

After the program everyone was invited to have free cookies and ice cream in the theater building where Ashley Ford, a young singer from Cavalier, entertained.

Once again every building was open with displays and activities. A tent, costumes and buffalo stew relived early Walsh County days. The Story Bus, petting zoo, fish pond, carousel rides, horse and cart rides, a treasure hunt and cake walk with Beanie Baby prizes thrilled the numerous children who were accompanied by their parents and grandparents to learn "how it used to be."

Historic Elmwood

During 1998, Elmwood was the scene of many Christmas events, birthday parties for 90 and 80 year olds, wedding anniversaries, bridal showers, gift openings and rehearsal dinners. The house was also rented on Christmas Eve for a family gathering. During Summerfest, Laurie Williamson hosted her classmates returning for a class reunion at a luncheon held in her former home.

The governing board also sponsored many events during the year including a Victorian Tea in May, the annual open house during Summerfest and the annual Spencer Spaghetti Supper held on election day.

This year Elmwood was decked out for Christmas with a tree in every room, wreaths, swags, gold ornaments and tiny white lights twinkling, all adding to the glow of the house.

Information for renting Elmwood is available from members of Elmwood's governing board.



Village Happenings



Lizz Fagerholt selling memberships at By-Gone Days.

Many events and activities took place at Heritage Village in 1998, from family reunions to community events.

Some of the major projects have been painting the interior and exterior of the theater building. The depot at the entrance to the village grounds was painted and additions have

been made to the military display.

On main street, work continues on the stores and shops and especially in the general and Nash stores. New displays and glass cases were set up for 140 new mounts in the taxidermy building.

On the 4.6 acres west of the Heritage Village road, formerly property of the State Developmental Center, drainage work, leveling, tree removal, tree planting and grass seeding has taken place this summer.

HERITAGE VILLAGE BOARD OFFICERS

Chairman.....	Ralph Adamsen
Vice-chairman.....	Jim Gaustad
Secretary.....	Leora Mathern
Treasurer.....	Diane Paulson
Manager.....	Jake Jacobson

Multi ethnic Christmas party

Walsh County Historical Society offered an open invitation to all ages to their ethnic Christmas Party Sunday, Dec. 6 at 2:30, at the Carnegie Regional Library in Grafton. Over 60 people responded to the invitation.

Christmas traditions were reenacted. Sweden was represented by Saint Lucia, the oldest daughter who brings coffee and sweets to her family the morning of December 13 and the Tomten elves who live on the farmstead and look after everything unless someone forgets to give them their bowl of porridge. Rice pudding with a good luck almond hidden in one serving was passed.

For Czechoslovakia, St. Nicholas visited accompanied by his companions, the Good Angel who gave the good children apples, and the Black Devil who gave the bad children potatoes. The Czech Singers entertained with Christmas carols in their language. Kolaches were the offered sweets. The first Christmas in Walsh County was described and denoted by a costumed early fur trader woman who offered a taste of venison and imitation high wine.

The cast of costumed Christmas characters were two wooden soldiers, an angel, two tomtens and St. Lucia, Dutch girl, fur trader woman, St. Nicholas and the Black Devil. Christmas carols

were sung and Christmas tree bingo was played. Coffee and mulled cider were served with various ethnic baking.

A special treat was a display of antique Christmas cards and decorations owned by Lorraine Kovash.

The Multi Ethnic Group also celebrated St. Patrick's Day in March and Norwegian Independence Day in May.



~ Centenarians ~

Ann Kelly, Park River, celebrated her 100th birthday on Sept. 24, 1998. She lives in her own apartment in Park River.

Henry Thompson, 101 on Oct. 8, 1998, makes his home at Lutheran Sunset Home in Grafton.

Mary Watson, 103 on May 21, 1998, makes her home at the Good Samaritan Center in Park River.

Centenarians who died in 1998 are as follows: William Gorder, Sr., Grafton, 100; Jennie Nygard, Grafton, 100; Alma Johnson, Adams, 100; Julia Gryde Lundgren, formerly from Hoople and Grafton, at the time of her death living in Florida, 107.

Walsh County Museum

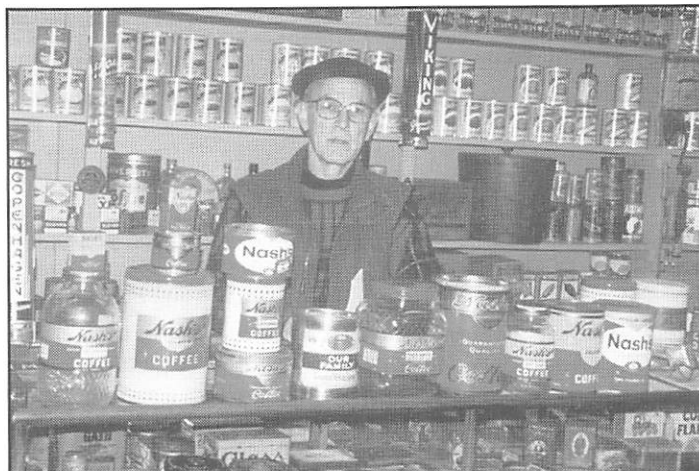
The Walsh County Museum has again had a most successful season hosting 750 students and visitors. Many of the students and their chaperones enjoyed searching the buildings and grounds using the 100 item treasure hunt map. School students and adults alike enjoyed the exhibits and displays.

We are looking forward to an even more exciting 1999 with the addition of the log trading post and its historical contents.

The museum has also completed some renovations in the main building making it more handicapped accessible. A railing was placed at the front door entrance and a wheelchair lift was installed on the south side of the museum building making the first floor of the museum accessible for the handicapped.

BOARD MEMBERS

Chairman June Selseth
 Vice-chairman Les Jallo
 Treasurer Ted Barta
 Secretary Marlene Swensen
 Curator Frank Schiller

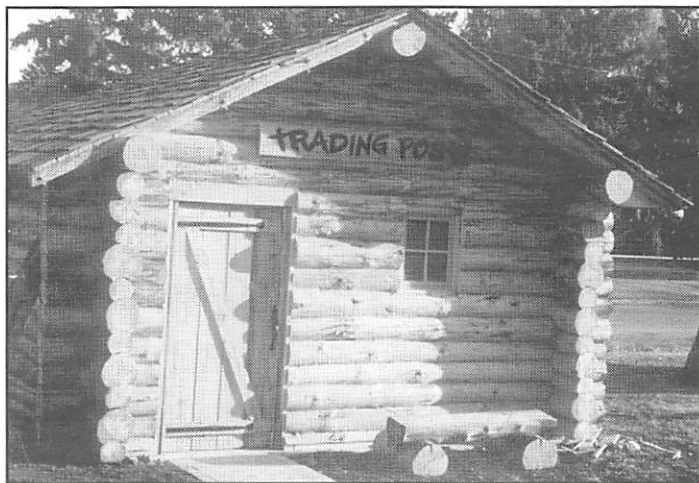


John Nash of the Nash-Finch Corporation of Minneapolis (a Minto Museum benefactor) made a visit to Minto November 12 to donate additional Nash Finch Company memorabilia to the museum's Country Store. John Nash is standing behind the display case in the museum.

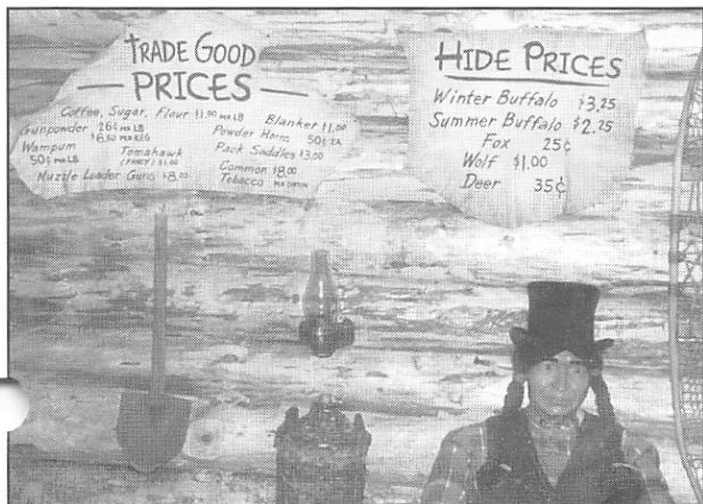
Trading post added at Walsh County Museum

An authentic log trading post was constructed in the fall of 1998 on the Walsh County Museum grounds in Minto. A company specializing in log structures was contracted to complete a 14'x16' building. Each log in the building was cut to fit and then constructed at the log company. It was then taken apart and logs were numbered and shipped. It was reconstructed in Minto just east and north of the main museum building.

The trading post is now a place to display fur skins, pickle barrels, liquor barrels, staples such as flour, sugar and other items from the middle 1800s. The cabin makes an interesting addition to the museum grounds.



Log trading post on the museum grounds.



Prices are noted on the trading post walls.



Fur skins and food barrels are a few items on display at the trading post.

'98 Historical Society Summary

January 1998 was the annual memorial service and meeting at the Heritage Village.

April 4, Dr. Albert Berger from UND's Department of History related the history of William Livingston of Park River. Livingston was William Avery Rockefeller, father of John D. Rockefeller, the founder of Standard Oil, who lived on a farm just east of Park River.

April 26 the society met at the Senior Citizen Center in Minto and an executive and board meeting was held at Elmwood.

Uncle Sig's Jugville was the site of the annual picnic held July 19. The Fun Tones provided entertainment and a birthday cake was presented to Sig on his 88th birthday.

The society met Oct. 26 at the Park River Bible Camp where Frank Vyzralek, Bismarck, showed slides and spoke on the Red River Ox Cart Trail which passed just west of the camp.

Two executive board meetings were held in the past year.

1998 OFFICERS AND BOARD

President Ora Stewart
Vice President & Membership John Curran
Treasurer Marian Hajicek
Recording Secretary Joyce Schultz
Corresponding Secretary Lorraine Paulson
Ex Officio Chris Misialek

DIRECTORS

Gloria Koltes Francis Seeba Charles Wilson

Hold-over Directors

Paul Westby Ken Stensland Barb Bracken
Robert Vaudrin Delaine Peoples Edith Harris

All of the above will also serve in 1999 (Vaudrin, Peoples and Harris were re-elected to serve a three-year term).

New life memberships noted

New life memberships in 1998 were: Ann Lunde, Laverne Vogsland, Dennis and Ella Mae Vogsland, Ottertail Power Co. and Michael Alm for a total of 89 life members. Each of these members has contributed \$100 and is kept in an interest bearing certificate with the interest used by the society for various projects.

There were also 200 general memberships and 18 business memberships.

The society also thanks those who gave memorials in 1998.

Three life members died in 1998: Leonard Fagerholt, Lavern Vogsland and Victor Stoltman.

Mary Rose Rodriguez remembered

The Walsh County Historical Society lost a dedicated member when Mary Rose Rodriguez died on January 15, 1998. She served the organization in many ways and was the recording secretary from 1988-1994 and again in 1997.



Pictorial church history

Pictures were taken of churches in Walsh County along with a brief history and submitted to the North Dakota State Historical Society in Bismarck. Assisting in this project were Barb and Gordon Bracken, Ora and Charles Stewart, Jean Bodmer, Lorraine Paulson, Pete Matejcek and Gloria Koltes.

This history of North Dakota churches will be kept at the Heritage Center in Bismarck.

Walsh Heritage Books

Volumes 3 and 4 are still available at the bargain price of \$2.00 each. They can be picked up at the Heritage Village in Grafton, First United Bank in Park River, the Barber Shop in Edinburg or from Pete Matejcek of Lankin. (Volumes 1 and 2 are sold out.)

TIME TO RENEW 1999 MEMBERSHIPS

We would appreciate it very much if you would take a few minutes of your time to mail your annual dues. We are enclosing your membership card for 1999.

ANNUAL REGULAR DUES PER PERSON \$3.00
ANNUAL BUSINESS \$10.00
LIFE MEMBERSHIP \$100.00

Your support helps sustain our Society.

Ora Marie Stewart & John Curran
Membership Co-chairpersons
Walsh County Historical Society
131 Prospect, Grafton, ND 58237
Editor - Lorraine Paulson

Walsh County Historical Society
RR 1, Box 32
Hoople, ND 58243

Non-Profit
U.S. Postage
PAID
Permit No. 12

*****5-DIGIT 58237
312 03-04-1999 1S 5P
CHARLES STEWART
131 PROSPECT AVE
GRAFTON ND 58237