



Walsh County Historical Society celebrates its 25th anniversary

The 25th anniversary of the Walsh County Historical Society was observed on Sunday, July 26, 1992 at Sig Jagielski's Jugville, rural Grafton, with a potluck at 12:30 p.m. followed by a program. Sig was one of the original signers of Articles of Incorporations and has continued his interest and support of the historical society. Other original signers in attendance were Francis Phelan and James O'Keefe.

Serving as master of ceremonies was Francis Phelan. Invocation and benediction was given by Roy Mohagen, society director. Peggy Dahl Bartunek and Janelle Davis sang several musical selections accompanying themselves

on the keyboard. The present officers were introduced as well as special guests. John Paulson, president, gave remarks summarizing the history of the organization. Guest speaker, Judge James O'Keefe, who was present at the formation of the society and the first secretary related many interested recollections of the organization.

Charles Lambrecht, Heritage Village president, gave remarks. Ed Gudajtes, director and former president, spoke on behalf of the County Museum in Minto.

Plaques were presented to past presidents. Over the past 25 years there have been seven presidents. Father Joseph Hylden, 1967 - '69;

Henry Lundene, 1970 - '72, 1975 - '76 and 1980 - '83. Henry was serving as president at the time of his death in 1983. Charles Stewart, 1973; R.F. "Pete" Matejcek 1977 - '79; Ed Gudajtes

1974, 1984 - '88. John D. Morgan was elected president to begin serving in 1989, but died before he could conduct his first meet-

See Celebrates

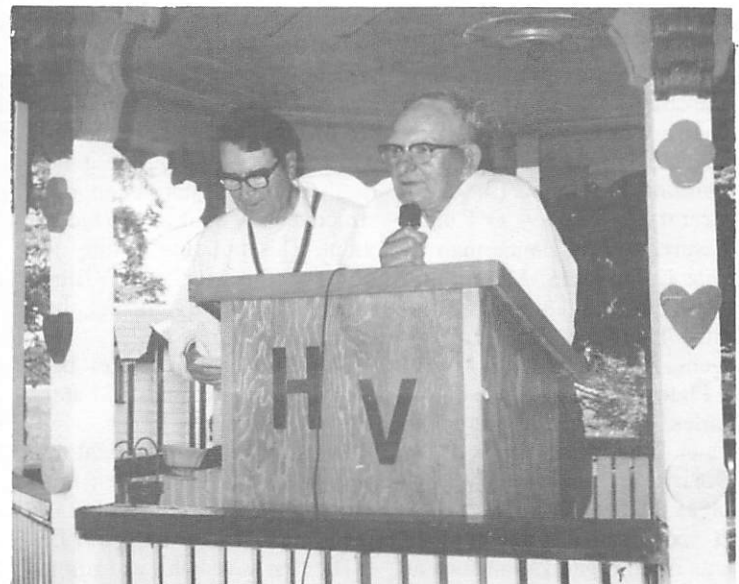
Continued on page 12



Charles Stewart, past president; John Paulson, present president; Judge James O'Keefe, first secretary, guest speaker and signed Articles of Incorporation and Pete Matejcek, past president, at the anniversary picnic at Jugville.



At the 25th Anniversary of the Society three members were presented plaques for serving in one capacity for at least 15 years. L. to R. Jean Bodmer, recording secretary for 15 years; Lorraine Paulson, corresponding secretary and editor of the annual newsletter for 18 years and Stephanie Prepiora, membership chairperson for 16 years.



M.C. Francis Phelan shares the podium with host Sig Jagielski at the anniversary party at "Uncle Sig's" Jugville.

Walsh County Historical Society completes 25 years of activity

by Lorraine Paulson,
Torr. Secretary

1992 marked the 25 anniversary of the Walsh County Historical Society. What a milestone for an active organization. I will try and give a brief summary of the past quarter century of the society.

Father Joseph Hylden called a special meeting for April 7, 1967, at the Grafton National Bank community room for the purpose of forming a Walsh County Historical Society. Twenty-one historically minded people laid the foundation for the organization. On May 7, 1967, a founders meeting was held in the Walsh County bank community room in Grafton. Articles of Incorporation were prepared by James O'Keefe and the 21 original signers for incorporation were: Father Hylden, Lynn Grimson, Francis Phelan, Sig Jagielski, Robert Burke, Mrs. John Koehmstedt, Roch Campbell, Al Zinke, Mrs. Art McIntyre, Frank Robb, Paul Hedje, Charles Zahradka, Denis Monson, Joe Bina, Harry Bergquist, Charles Harris, Mrs. Clem Kenny, W.J. Johnson, James O'Keefe, Eugenia Archer and Hulda Carlson.

The general purpose of the society was to preserve and promote local history with plans to establish one or more museums in the county.

The first officers elected were: President — Father Hylden, Vice President — Henry Lundene, Secretary — James O'Keefe, Treasurer — Jack Bannerman

First Committees: Museum — Father Hylden, Historical Sites — Henry Lundene, Publicity — Eugenia Archer, History — Winnie Flaten, Ways and Means — Charles Zahradka, Membership — Jack Bannerman.

During an anniversary year such as this, you can reflect back and see the many accomplishments of an organization such as this.

Minto was chosen as the site for

the Walsh County Museum in 1970. The museum was dedicated in 1976. The quonset type gymnasium was acquired in 1975 and several other buildings have been moved onto the grounds such as a country school, log cabin, Conway jail and cookcar. "Museum Alive" is held every other summer and the museum is open on Sunday afternoons during the summer and by special appointment and holidays. Hundreds of students tour the museum every spring. Stephanie Prepiora has been the volunteer curator since 1973. In 1991 the museum was placed on the National Register of Historical Places.

The Walsh County Village was established when a 99 year lease was signed with the State of North Dakota — House Bill #119 — for nine plus acres of State School property on March 8, 1969. By 1975 the old Voss Depot had been moved to the village grounds and the rest is history. Some of the buildings moved onto the grounds have been Acton country school, Landstad Church, Williams Taxidermy building, Donnelly log cabin, Mandt Hall, Shoult's farm home, Bjorneby barn and the caretakers home. Other buildings have been moved in and converted to various uses or new construction. In 1988 seven pioneer stores were constructed in a strip for display purposes. In October 1978 the theater building was dedicated and had been constructed with funds from a federal grant. This building is truly the core of the Heritage Village grounds and is the gathering place of many activities.

Two successful gravel bees were held in 1976 and 1981 at the Heritage Village.

The first county historical tour was held in 1968 and ten tours were held consecutively and plans are to resume tours in 1993.

The first newsletter was printed in 1974 and has continued annually since that date.

Historical markers have been placed at various sites in the county such as:

Gryde School near Edinburg; First site of old Edinburg; St. Patrick's Church, Minto; Alexander Henry Trading Post Rest Area; Blue Star Marker at the Heritage Village; Pioneer Memorial Gardens, Homme Dam near Park River; Old Sweden west of Nash and several others.

In 1976 volumes I and II of the Walsh County Heritage books were published preserving much of the early history of our county and in 1981 volumes III and IV were published.

In 1981 Walsh County celebrated the centennial of our county along with the book dedication at the Heritage Village. A time-capsule was sealed and placed near the entrance to the Heritage Village.

A centennial spoon of Walsh County was made and sold with proceeds used for various historical projects.

Work has been done on abandoned cemeteries. Historical society members assisted in the cataloging of burials in the cemeteries and on private property for the Red River Genealogical Society.

Several structures have been placed on the National Register of Historical Places and they are as follows:

St. Stanislaus Church, Warsaw, (1979); Walsh County Courthouse, Grafton, (1985); Old Minto School, (1991); Elmwood and Grafton Post Office.

There is a management agreement between the Heritage Village and N.D. Park and Tourism Dept., owners of Elmwood, which is a restored Victorian home in Grafton.

Finances are needed for the numerous projects. Volunteer workers are needed and ap-

preciated, but are not enough. First membership dues were one dollar a year and now it is only three dollars a year. Charter memberships started in 1969 and continued until 1974 and were sold for \$10 each and the plaque for charter members was designed and made by Charles Stewart. The list of charter members are listed in the county museum. Life memberships are \$100 and to date there are 61 with the interest used for the various projects. The annual business membership is \$10. The society could not operate or grow without the quarter mill levy granted in 1972. The daily calendar drawing project generated income for the society for five years, 1986 - 1990, with Leonard Fagerholt, chairman.

Other activities have been pancake meals, auctions of new and used items, antique shows and sales, several folkdances, bingo, historical displays and programs at the Walsh County Fair and State Potato Show in Park River, many ethnic programs, Alexander Henry placemats and essay contest in 1985. A float was constructed in 1976 depicting the John Bakken sod hut and was seen in many parades. In 1976 approximately 30 pioneer citizens in the county were interviewed for the State Historical Society. Since 1983, an annual memorial service has been held for deceased members.

In 1978 the society hosted the Red River Historical Society and Founder's Day program and Banquet, in 1980 the State Historical Society and again in 1987 the Red River Valley Historical Society.

In 1990 Sig Jagielski made an agreement with the Heritage Village to continue Jugville after Sig is no longer able. In December 1990 an appreciation day was held at the Heritage Village for Uncle Sig.

Miniature pioneer farm machinery on display



Marie Byzewski stands in front of her husband's machinery display she donated to Heritage Village.

By Lorraine Paulson

Miniature pioneer farm machinery is displayed in the theater building at the Heritage Village in Grafton and is a recent gift from the Frank Byzewski family. Mrs. Marie Byzewski and sons, Jim and Jeff, didn't want to break-up the display, wanted to share it with others and they wanted to see it again, so it was given to the Heritage Village. Frank's collection includes about 50 handmade replicas from wagons, hayracks, sleighs, rakes, potato equipment, walking plow and an operational threshing machine.

His creations began with the

horses, the only pieces he didn't create with his own hands. He did carve one horse. He collected and purchased horses wherever he went or when he saw one he liked. Frank would fit the horses with a full harness rig including a collar and reins, all handmade. And all of Frank's models have a farmer made from wood, which he carved himself to operate the equipment.

Frank grew up on a farm near Warsaw in Walsh County later moving to the Grafton area. Frank Byzewski's hobby will live on and be shared with others. Frank died at the age of 80 in April 1992.

Henry French donates replica of U.S. Capitol

By Lorraine Paulson

This is a replica of our U.S. Capitol standing on the stage at the Heritage Village in Grafton, a recent gift from Henry French. Henry said that his decision to build the Capitol was greatly influenced by the pictures he saw of the U.S. Capitol in the book about J.F. Kennedy entitled "The Torch is Passed." He planned to build only the dome and use it as a bird house, but the project developed into a much larger structure. A bird house he completed this summer is a replica of the Catholic Church in Oakwood. Henry has built dozens of birdhouses.

The finished U.S. Capitol built in 1972 stands eight feet nine inches tall, 67 inches wide and 74 inches in length, which includes the steps and took nine months to complete. The 4,100 pieces,

hinged doors, dozens of pillars and copper lattice work on the windows were time consuming. The late Mrs. French did the painting and the steps appear as if they were marble.

Henry has always enjoyed carpentry work, so he decided to rent out his farm land and began to build homes. But now carpentry work is his hobby. Henry celebrated his 90th birthday on January 6, 1993 and he can still be found working up to eight plus hours each day on his hobby. Henry said that he has made over 330 tilt tables and enjoys repairing and refinishing furniture.

What a magnificent sight when the lights are on inside the dome and the rotunda. Thanks Henry for a most wonderful gift, which will be shared with many for years to come.



Henry French stands beside U.S. Capitol he constructed and donated to Heritage Village.

Gudajtes family marks site of general store

The Gudajtes family placed a historical marker on the site of the old Gudajtes General Store, Warsaw. In 1892 Anton Gudajtes opened a general store in a town that was yet to be named. Two years later with the establishment of a post office the town that was once known as Pulaski officially became Warsaw. Anton Gudajtes was appointed postmaster, taking

the oath of office on June 30, 1894 and he held the office continuously until the post office was discontinued on January 31, 1935. Over the Fourth of July weekend of 1992, 128 members of the Gudajtes family gathered at the site marking the centennial of the Gudajtes General Store which operated from 1892-1988.



A historical marker was placed at the site of the Gudajtes Centennial Family Store. L. to R. Leona Gudajtes, Frances Risky, Sophie Wysocki, Ed Gudajtes, Blanche Babinski and Helen Paschke.

Porch at Elmwood dedicated

By Rae M. Desautel

Karen Assel of North Dakota Parks and Tourism Department called the dedication ceremony "a celebration of progress." The ceremony last June marked the completion of the Elmwood's porch project.

"Elmwood is appealing to us not only for its historical significance but also for the natural areas of significance," she said.

"It's far more stunning than I imagined," Louis Hafermehl, director of archeology and historical preservation at the State Historical Society of North Dakota in Bismarck, said. "Standing on 20 acres of flora and fauna, Elmwood's natural beauty has been recognized by many," he added.

"This is a very special day. One of the goals of the Historical Society is to preserve history along with restoration. We've seen many restoration projects, but in the past we've also seen too many historical buildings destroyed," John Paulson of Hoople said. Paulson is president of the Walsh County Historical Society.

Charles Lambrecht, president of Heritage Village board of directors, brought attention to the link between Elmwood and the Village. Elmwood is managed by the Village through an agreement with the State Parks and Tourism Department.

Calling it "a marvel to the city," Sharon Martens, president of the Grafton City Council, thanked people who had faith in the project for their dedication. She said, "It (Elmwood) has a very special vicarious meaning to me. . . when I lived on the other side of river on Cooper Avenue and spent my youth just staring, imagining. . ."

Rae Desautel, master of ceremonies, introduced families or descendants of families who once lived in the house facing Cooper Avenue. In the audience was William N. Treumann of Tucson, AZ. His great-grandfather owned the property from 1910 to 1919. Also present were Mildred Maxwell Bergh and

her husband Charles and their daughter, Cheryl Malm of Grand Forks. Edith Maxwell moved with her family to Elmwood in 1927. They occupied the house until 1945 when Luther and Mary Nancy Williamson bought the house.

Mary Nancy Williamson and her son Erik who was born shortly after moving to the house, were in the audience. Williamson now lives in Mission, TX, while Erik is a resident of Grand Forks.

The Williamson family is responsible for seeking National Register of Historic Places status in 1985. The mansion and 20 acres were given to North Dakota Parks and Recreation Department in 1986 by the Williamson family.

John McMillan, Fordville, president of the Walsh County Historical Preservation Commission, said at the dedication, "It's a beautiful addition to Grafton and the community. Elmwood personifies with its elegance and charm the best of a bygone era. It's possible to preserve the past while enjoying it."

The rebuilding of the porch to its original design was a project of the Preservation Commission. Members sought historic preservation funds from the National Park Service and administered by the State Historical Society of North Dakota. Elmwood's Governing Board initiated a fundraiser, The Spindles and Posts Porch Project, to raise matching funds. There were other grants from North Dakota Parks and Tourism Department, Kopperud Foundation, Grafton Endowment Fund, Heritage Village and Walsh County Historical Society, that helped defray the cost of the porch.

The roll of contributors was read by Elmwood Governing Board members: Virginia Anderson, Leora Mathern, Doug Johnson and Gloria Thompson. McMillan cut the ribbon allowing the public's access by way of the porch to the mansion for the first time.

Throughout the dedication ceremony Duane Littlejohn of St. Thomas, sang several numbers in-



Historic Elmwood with new porch.

cluding a number he co-wrote with Alice Radi, dedicated to the Victorian mansion by the side of the river. A line from the song was "Take a step back in time."

Later, that's what guests did as they strolled the grounds and toured the house.

In July members of the Williamson family took a step back in time as they gathered at Elmwood for a sleepover. The sentimental journey home was the first time in many years the family had been

together at the same time.

With completion of the porch project, the Governing Board is looking to the future as restoration of the antique mansion continues.

In the meantime, the public continues to enjoy the atmosphere of timeless beauty by attending events such as Spencer's Election Day Spaghetti Supper and Christmas at Elmwood. The mansion also is used on a regular basis by groups for private events.

Our Saviour's church donates Paulson house

In June 1992 this house was moved to the Heritage Village from just south of Our Savior's Lutheran Church, Grafton. The house has been remodeled and will be used by the village caretaker. Heritage Village received the house from the congregation for the cost of moving. Our Savior's church had purchased the property from the Anna Paulson estate in 1987.

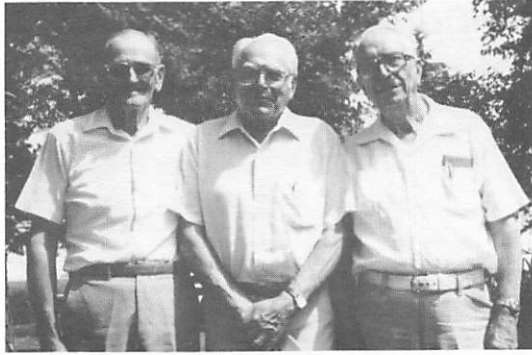
The following information was taken from the Grafton Centennial Book, 1982, concerning this home. It is probably one of the oldest homes in Grafton, this house, according to a published account by William Chandler, was



Paulson house.

moved up from the river bank where it was first built about 1880. Recorded in Nellie Chandler's name. It was deeded to her family upon her death in 1992. Stena Foxen was owner in 1916 and John P. Rydsaag in 1919.

Walsh County Historical Society



Sales Committee for Walsh Heritage Books Vol. III & IV. James Johnson, Pete Matejcek, book ch., and Leonard Jensen.



Father Joseph Hylden, first president and founder of the Walsh County Historical Society. 1967



The first book committee discussing the project. L. to R. Winnie Flaten, Leonard Jensen, Nora Gryde and James Johnson. (1976)

Remember When — 1967-1992



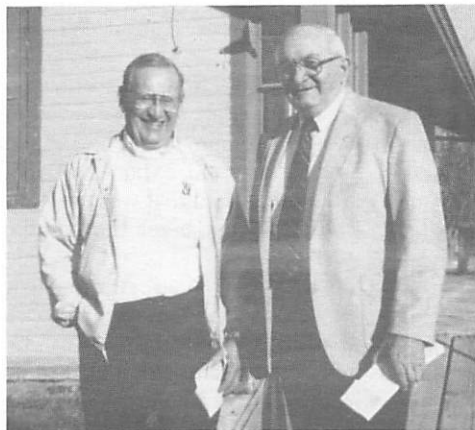
Charles Stewart, ch. Walsh Centennial Commemorative pin comm. presents Henry Lundene, Society Pres., the pin marked number one in 1981.



Governor Art and Grace Link with Ralph & Jackie Adamsen at dedication of theater building at the Heritage Village in October 1978.



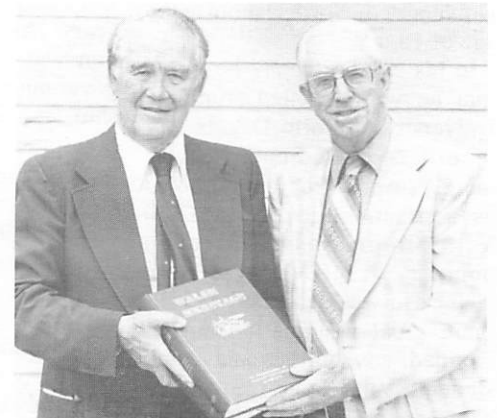
1989 Frank Schiller, museum ch., relaxing with Stephanie Prepiora, volunteer museum curator since 1972.



L. to R. John Morgan, ch. Heritage Village Board with Society President, Ed Gudajtes in 1986.



Walsh County Centennial & Heritage Book Dedication (Vol. III & IV) Committee 1981. Lizz Fagerholt, vice ch. with Robert Burke, ch. of the event.



U.S. Senator Quinten Burdick, N.D., with Society President, Henry Lundene at County Centennial & Book Dedication. (1981)

Vilhjalmur Stefansson

One of the foremost Arctic explorers grew-up in Mountain, North Dakota



A young Stefansson

By Lorriane Paulson

Each newsletter I try to focus on one well-known person from northeastern North Dakota. I would think that most of you have heard about Vilhjalmur Stefansson, one of the world's foremost Arctic explorers. Vilhjalmur taught country school in Walsh County, Acton Township in 1900 and 1901. Vilhjalmur, a son of Icelanders, was born November 3, 1879, in a cabin on the shore of Lake Winnipeg at Arnes, Manitoba and died on August 26, 1962 in Hanover, NH. When he was 18 months of age, the family homesteaded near what is now Mountain, (Vik), ND. He attended country school in Thingvalla Township, Pembina County. At the age of 15 he herded cattle north of Gardar for his livelihood, later taught country school saving money to enter the University of North Dakota at the age of 18.

In his autobiography he wrote that he was expelled from the University of North Dakota, but records now indicate he was merely suspended. He was known as a practical joker. In 1930 Vilhjalmur was granted an honorary L.L.D. Degree from UND. He was described as brilliant, great imagination, undisciplined, adventurous and bored student. Vilhjalmur went on to earn a degree from the University of Iowa and also a degree from Harvard University.

Stefansson wrote 25 books and over 400 scientific papers. The

UND has several of his autographed first-edition books, "The Friendly Arctic," "The Northward Course of Empire," "The Fat of the Land," "Hunters of the Great North," and "Iceland-the First American Republic."

Stefansson originally planned to travel to Africa, but by chance an opportunity arose where he could travel to Arctic Canada and he became a true expert on all of the Arctic. He was an explorer and ethnologist with major expeditions in 1906 - 1907, 1908 - 1912 and 1913 - 1918. He greatly extended our knowledge of the islands and coastlines of the western Arctic and its people. He believed that an experienced Arctic traveler could live off the land as the natives did. He advocated a rather unusual diet — a diet with a large percentage of fat to insure survival under severe environmental conditions. He also saw the importance of learning and understanding the language of other cultures if they were truly going to understand their culture.

Vilhjalmur explored in areas previously unknown to non-natives. He explored for scientific purposes, not just for adventure. He named several of the larger Canadian Islands. One of the islands is called Stefansson and is located just west of the north magnetic pole.

The expedition he organized in 1913 kept him away for five years. The money for the expedition was paid by the Canadian government. In a bad storm, his ship was carried all the way to Siberia so he was forced to travel like the Eskimos and lived as the Eskimos did. Stefansson mastered the Arctic by ways of the Eskimo. He realized that they did not need to bring along vast supplies of food. And they could build warm shelter in just about an hour to spend the night. He had his rifle and could hunt the seal and polar bear. He learned how to dress and how to travel like the Eskimo. He said that existence depends upon moving to where



Vilhjalmur Stefansson in his elderly years

they could find food. He went as far as to call the Arctic — the Friendly Arctic, which is also the title of one of his books. Stefansson traveled hundred of miles on sea ice. Twice he was given up for lost and presumed dead. Many times he was in great danger, but he unlocked many secrets for the north and survived. He mapped many land areas.

After his five year expedition he came home and found that he was well-known. He lectured and wrote books on the Arctic. Stefansson said it was no longer the past of the north that interested him, but it was the future of the north. He said that the Arctic was rich in food resources — he dreamed that the Arctic meadows might one day support the domesticated musk ox and reindeer herds. He had long ago dreamed that other people would continue his scientific studies. Today the United States, Canada and Russia or Soviet Union have established research stations throughout the Arctic to uncover more of its secrets.

The ice would continue to make surface travel difficult, but Stefansson foresaw the day when the sounds of aircrafts would

break the Arctic stillness. He advocated the use of polar routes between the continents of Europe, Asia and North America. These routes today are routinely flown by civil and military aircraft and used by thousands of passengers each day. Today the shortest journey by jet from Amsterdam to Vancouver, from Copenhagen to Tokyo are over the top of the world. Stefansson became an advisor to airway companies and the U.S. government.

Long ago he dreamed of conquering the ice barrier by going under it and he and his Dartmouth colleague, Sir Hubert Wilkins foresaw journeys by submarine. They were told it was crazy to imagine such things — what would happen to men trapped under the solid expanse of ice. Stefansson said that was easy because they can break through the surface as he had seen the whale do it, so why can't the nuclear powered subs do the same. Before Stefansson died in 1962 he predicted there would be trade routes under ice caps — submarine tankers carrying oil and minerals from an Arctic which

See Stefansson

Continued on page 7

Stefansson

Continued from page 6

exploration proved to be rich.

Stefansson spend his last years at Dartmouth College in New Hampshire writing, organizing a library of his collections and writing on his encyclopedia Arctica. He would also lecture on his experiences. Many honors and medals were awarded Stefansson by geographical societies in America and Europe as well as doctorates from Universities in the United States, Canada, and Iceland. In 1946, Stefansson was ranked sixth on a list of 10 most famous persons alive, with Albert Einstein listed fourth.

A bronze bust of Vilhjalmur Stefansson stands in the UND Chester Fritz Library honoring this noted explorer, anthropologist, writer, teacher, linguist, archeologist and much more. His book and many papers are also available at the UND Library and other libraries. His books could be very interesting reading this winter. Vilhjalmur Stefansson is truly one of North Dakota's most distinguished and scholarly citizens.

U.S. known to be multi-ethnic

The U.S. is known as a multi-ethnic country resulting in North Dakota being a multi-ethnic state. The 1990 U.S. census gives some interesting facts. In the U.S. the top five groups nationally were German (57.9 million), Irish (38.7 million), English (32.6 million), Afro American (23.7 million), and Italian (14.6 million). There are 3,869,395 Norwegians nationally.

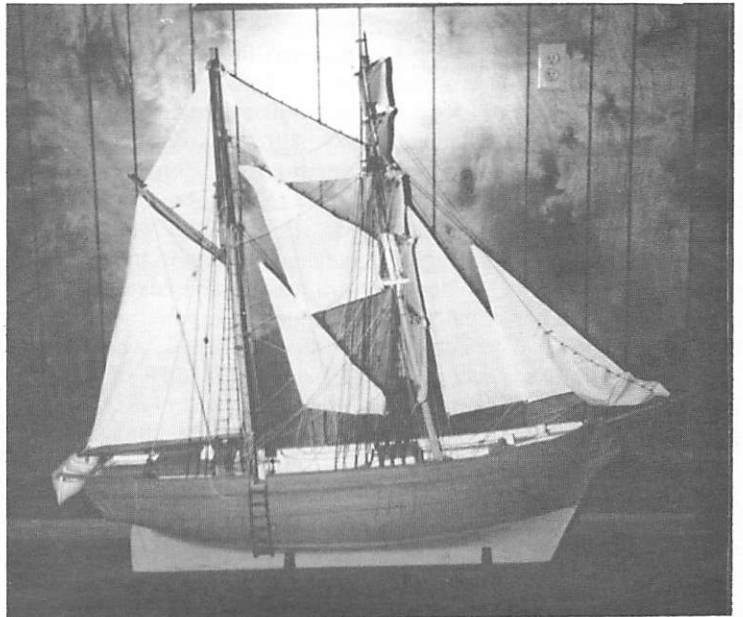
In North Dakota the census shows the following: German, 324,929; Norwegians, 189,106; Irish 53,678; English, 39,015; and Swedish, 35,933.

An interesting result was that nearly 40 percent of all Norwegian Americans live in Minnesota, North or South Dakota and Wisconsin. In North Dakota 29.6 percent of the people claimed to be of Norwegian descent.

Replica of Norwegian ship on display at Heritage Village

A replica of a Norwegian Sailing Ship — Barkentine Rio Trondheim — was given to the Heritage Village from Olga Gryde and Julia Gryde Lundgren in 1989 and is displayed in the theater building.

Following information provided by the Gryde family. Upon retirement from a life at sea a Norwegian fisherman built this model of the ship in which he had sailed and worked so many years. Juel Carlson had traded a revolver and \$12 for this model and brought it with him to the Gryde Farm where he worked for some-time. He had given the ship to Mrs. Ole Gryde before going into military service in World War I, Juel never returned from the war. Elvin Gryde had restored the sails twice, in 1930 and again in 1968.

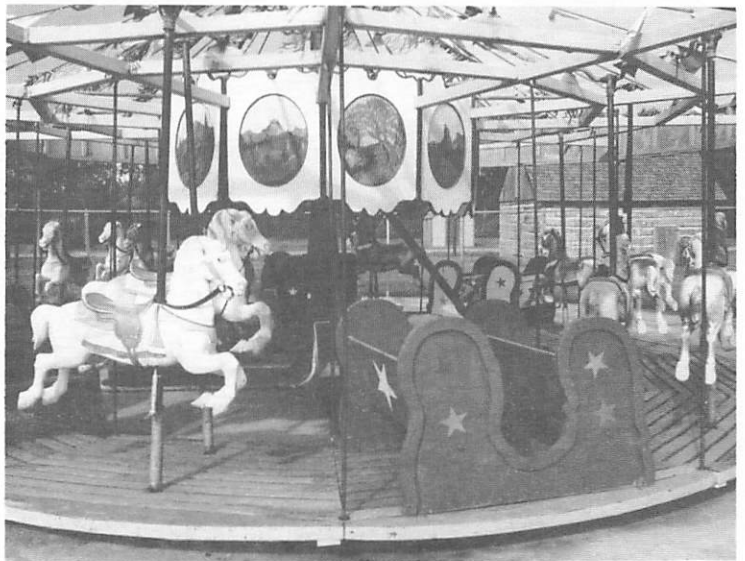


Replica of the Norwegian Sailing Ship Barkentine Rio Trondheim

Restored carousel from the Developmental Center entertains young & old at Heritage Village

This carousel has brought smiles and laughter to many over the years. Over 400 children had a ride during the city festival this past summer, much to the delight of both kids and parents.

This 1916 model carousel has been at Heritage Village since 1986 when it was acquired from the Development Center in Grafton. During the past year, much restoration has been accomplished, the 14 horses all have been painted and no two alike, the top framework was all rebuilt as well as the panels holding the faces and the panels on the inside. The fancy seats have been rebuilt using the trim from the original pieces. Although much restoration remains to be done, we are proud of our "Carousel" and hope next season can see more improvements. Our goal is to someday see this carousel of



The carousel at Heritage Village was enjoyed this past summer by young and old alike.

the past preserved under a permanent cover so it can be preserved for the future genera-

tions to enjoy. But with our limited funds, this is still a dream and goal we are working towards.

Roger Allin, fourth ND governor and former Walsh resident, honored

A silver maple tree was planted by Governor George Sinner in the City Park in Park River on September 30, 1992 in honor of the Fourth Governor of North Dakota, Roger Allin who was from Walsh County, Park River — Grafton area.

As part of the North Dakota's Centennial tree project, Governor Sinner is planting a tree in honor of each past governor of the state in their home town. The Centennial Tree Committee is encouraging the planting of 100 million trees over a period of 10 years.

Roger Allin was born in England in 1848, moved to Ontario, Canada and came to Dakota Territory in 1881 and homesteaded in Fertile Township, Section 22 (eight miles west of Grafton). He continued to make his home on the homestead until

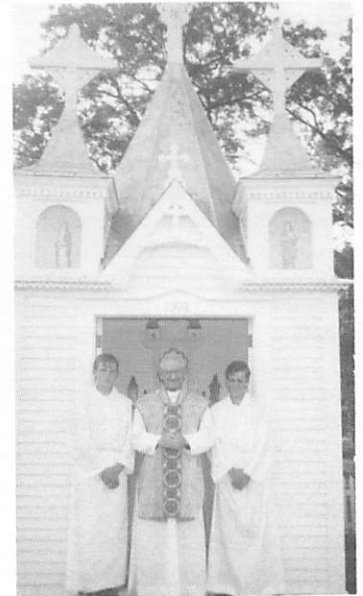
1907 when he moved to Park River.

Roger Allin was elected to the Dakota Territorial Council in 1886 and re-elected in 1888. In 1889 Allin was delegate to the Constitutional Convention and elected to the State Senate that year. In 1891 he was elected lieutenant governor and in 1894 Allin was elected governor from the Republican party and served in 1895 and 1896. The former Governor Allin died on Jan. 1, 1936 at the age of 87 in Park River. The Allin homestead is now owned by Jens and Nellie Torkelson and they live in the original house built by Allin.

All Park River elementary students from grades K - 6 were present for the 1 p.m. ceremony as were other area residents.



Governor George Sinner helped plant this tree in Park River in honor of the late Governor Roger Allin.



St. Joseph's Chapel

Harvest Mass held annually at historical St. Joseph's Chapel

In July the annual Harvest Mass was held at St. Joseph's Chapel approximately five miles east of Warsaw in Pulaski Township. This chapel was constructed in 1907 and is just large enough for a priest and two altar boys.

At this Harvest Mass God's blessing is asked upon the crops, good weather and for those in attendance. This practice has continued over the years. Choir members from St. Stanislaus Church, Warsaw, sang in Polish. Hopefully this chapel will soon be placed on the National Register of Historic Sites.



Walsh County's first newspaper

1881 — Walsh County's first newspaper, the "Acton News" published its first issue. Later that same year it moved to Grafton after that city had been selected as the County Seat.

Annual memorial service held for deceased members



Gordon and Barbara Bracken and Ora Marie Stewart conducting the annual memorial service in January 1992 during the annual meeting at the Heritage Village. During the program a flower was placed in each vase and a candle was lit for each member who died the past year.

Ya. Youbecha Oofdah

1990 U.S. Census figures show that a good chunk — nearly 40 percent — of all Norwegian-Americans live in Minnesota, the Dakotas and Wisconsin.

States with most people of Norwegian descent: (and percentage of state's population)

- 1. Minnesota — 757,212 (17.3%)
- 2. California — 411,282 (1.4%)
- 3. Washington — 333,521 (6.9%)
- 4. North Dakota — 189,106 (29.6%)
- 5. Illinois — 167,003 (1.5%)
- 6. Iowa — 152,084 (5.5%)
- 7. Oregon — 124,216 (4.4%)
- 8. South Dakota — 106,361 (15.3%)
- 9. Texas — 94,096 (0.6%)

63 individuals from Walsh County community enter religious vocations

In the small village of Oakwood, ND located five miles east of Grafton in Eastern Walsh County, the Sacred Heart Catholic Congregation has seen numerous members go on to a religious vocation. Since the church was organized in 1881, this small rural parish has seen 35 of its members go on to a dedicated religious life — seven priests including one bishop, two brothers and 26 sisters.

The early years of Sacred Heart was thought of as the community's missionary stage with services held in homes and later a primitive chapel. In 1906 a church was constructed, which was destroyed by fire by 1911. In 1912 a new church was built, which was smaller than the church that had been destroyed by fire.

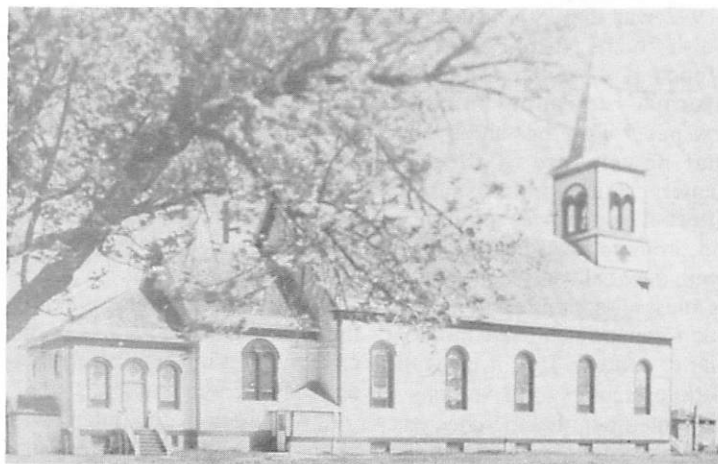
Oakwood is a small rural community — population under 100. Oakwood had a post office from 1895 until 1924 when it was closed and became part of the rural Grafton route.

The first Sister's School and Convent call St. Aloysius Academy was constructed in 1906 with a larger wing added in 1908 near the Sacred Heart Church. The Sisters had been suppressed in France and had come to America with plans to set-up schools. The Sacred Heart Congregation in Oakwood encouraged them to come to their

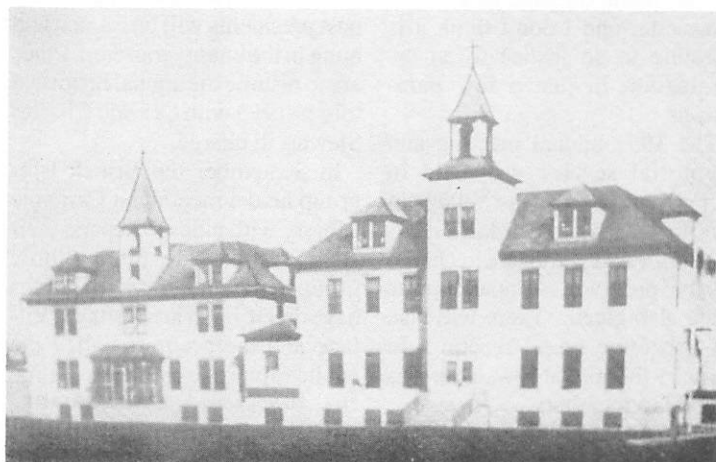
parish and organize an academy and for the next 61 years the church parish and academy worked closely. The students, teachers and congregation were often referred to as one large family. St. Aloysius Academy was a private school owned and operated by the Sister of Mary of the Presentation. Students came from other parishes to attend the academy and from that group an additional 28 people went on to religious vocations, two men and 26 women.

Academy played an important part in the lives of the children in the parish and community and influenced their choice of professions. At the first registration in 1906, 36 pupils enrolled with eight of them as boarders at the academy. With the larger addition in 1908 the academy could accommodate some 60 boarders and all the day pupils of the vicinity who wanted to attend. Eight years of elementary education was offered until 1910, when four years of high school was added to the curriculum with the first high school graduation in 1918.

The St. Aloysius Academy along with Sacred Heart Church truly played an important part in seeing a total of 63 enter a religious vocation. The school closed in 1967, but the high school terminated two years earlier in 1965. The Sisters sold the



Sacred Heart Catholic Church, Oakwood



St. Aloysius Academy

property and the academy was demolished and new homes were constructed on the property. One hundred and eleven years later in 1992 Sacred Heart Church is still alive.

As editor of the newsletter, I found it most interesting reading three history books written about the church and academy. It is truly an achievement worthy of recognition.

8 women are centenarians

Eight women in Walsh County are at least 100 years of age. We know of no men who have reached that milestone in our county.

Mrs. Emma Novotny celebrated her 100th birthday, January 22, 1992. Emma is a resident of Good Samaritan Home in Park River.

Mrs. Laura Nelson, Grafton, celebrated her 100th birthday, May 2, 1992. Laura, a widow for 25 years, lives in her own home.

Mrs. Mary Finley was 101 on

February 21, 1991. She is a resident of the Good Samaritan Home, Park River.

Mrs. Frank (Anna) Kubesh, Grafton, was 101 years of age on June 28, 1992. She is a resident of Lutheran Sunset Home, Grafton.

Mrs. Joe (Katherine) Dub, Sr. was 101 years of age on December 24, 1992. She is a resident of Lutheran Sunset Home, Grafton.

Mrs. Carl (Anna) Russum, Grafton, celebrated her 101 birthday on October 5, 1992. She

is now a resident of the Good Samaritan Home in Warren, MN.

Anna Seeba, Grafton, was 103 years old of age on March 12, 1992. She is resident at Lutheran Sunset Home, Grafton.

Rena Peterson was 104 years of age on September 2, 1992. She is a resident at Lutheran Sunset Home, Grafton.

If you know of any other centenarians in Walsh County, contact Lorraine Paulson, Hoople.

Sen. Burdick dies

North Dakota U.S. Senator Quinten Burdick died on September 8, 1992 in Fargo. Quinten was born in Munich, ND in 1908. He attended the Centennial Celebration for Walsh County and Heritage Book Dedication in Grafton in 1981.

November 1958 Quinten Burdick became the first North Dakota Democrat elected to U.S. House. Quinten Burdick succeeded his father, Usher, a Republican who held the seat for 20 years.

Summary of 1992 activities

By Lorraine Paulson,
Corr. Secretary

1992 was the 25th year of the Walsh County Historical Society. I found it most interesting and informative reading minutes, newspaper write-ups and the annual newsletters of the past quarter century. It is a time to reflect. The goal was to preserve and promote local history, and I think, the goal was reached. Now we must all continue and hope as much can be achieved the next quarter century. But, it takes the work of many good volunteers and remember, that includes you.

I wrote a summary of the Walsh County Historical Society, which can be found on page two of this newsletter and I don't think it is possible to do justice to an organization in just a few paragraphs.

The 1992 annual meeting and memorial service was held in January at the Heritage Village in Grafton. Barb and Gordon Bracken and Ora Stewart were in charge of the program. Annual reports were also given. There was also an executive board meeting. In January the annual newsletter was mailed to members.

The annual membership drive was held in March at area banks and savings and loans with Emma Lou Minden in charge. Hopefully most members have already voluntarily returned their membership dues. The March meeting was held at the Heritage Village.

The first Sunday in June the

county museum in Minto opened for the summer. Hundreds of school students toured the museum in May.

The new porch at Elmwood was dedicated on June 27th. The 25th anniversary of the historical society was held at Sig Jagielski's, Jugville on July 26th. Lois Eisenrich, Jean Bodmer and Lorraine Paulson were in charge of the arrangements.

Roy Slough portrayed an early fur trader — Louis Parker — and ox cart driver in Dakota Territory on August 23 in Drayton.

A nominating committee was appointed and they were: Lizz Fagerholt, Ed Gudajtes and Charles Lambrecht. Pictures of the past presidents will be framed and hung in the county museum. Plans are to resume the annual historical tour in 1993 with Ora and Charles Stewart in charge.

In September the British Isles group held a meeting at Carnegie Library with plans to expand their group to include other ethnic groups. Several more meetings have been held at Heritage Village and the group is called the Multi-Ethnic Group. It is a time for fun, food and sharing. Everyone is welcome so plan to attend. Meetings are announced locally.

The November meeting was held at Elmwood. Membership was renewed in the Red River Heritage Society. To date there are 409 regular memberships, 26 business and 61 life member-

ships. New life members in 1992 were: Lennart Alem, Park River; Donna Robinson, Burnsville, MN; Jean Bodmer, Mesa, AZ; Judge James O'Keefe, Grafton; June Kraft, Bismarck and Stephanie Prepiora, Minto.

Since 1992 marks the end of 25 years of the society the list of life members will now be written in calligraphy, framed and hung in our county museum along with the charter memberships. Life memberships will still be received. The life memberships of \$100 are placed in a special account and interest goes into the general fund of the historical society.

1992 officers were: President — John Paulson, Vice President — John Curran, Treasurer — Lois Eisenrich, Recording Secretary — Mary Rose Rodriguez, Corresponding Secretary — Lorraine Paulson, Membership — Emma Lou Minden.

New directors for three year term — starting in 1992: Lizz Fagerholt, Dennis Anderson and Mary Osowski.

Hold over directors were: Ora Stewart, Geo Chyle, Vic Koppang, Roy Mohagen, James Johnson, Pete Matejcek and Ed Gudajtes, ex-officio.

1993 officers were re-elected. New directors — starting in 1993 — for three year term: Henry Risky, Harvey Lykken and Matejcek re-elected. (Replacing Mohagen and Johnson.)

Plans set to mark more historical sites

The Walsh County Preservation Commission along with the Walsh County Historical Society would like to identify more former sites in our county before they are lost to history. This could be former post offices, schools, churches, towns and cemeteries. One of the original goals of the historical society was to preserve and identify local historical sites. The past few years we have been

slack in carrying out this goal.

If you have any knowledge of sites or could assist with this project, contact — John Paulson, Hoople, president Walsh County Historical Society; Mary Rose Rodriguez, Grafton, secretary of historical society or Jon McMillian, Fordville, ch. Preservation Commission. This project can only be as complete as you help make it.

Memorial service to be held for deceased members

Members of the Walsh County Historical Society who died in 1992. Each year a memorial service is held at the annual meeting in January at the Heritage Village in Grafton.

Leonard Jensen, Edinburg, Charter & Life Member, former treasurer and director; Robert Burke, Grafton and Mesa, Charter & Life; Warner Taylor, former Mayor of Grafton, Charter; Mrs. Ruth Rand, Grafton; Percy Davis, Grafton; Frank Byzewski, Grafton; Gordon Corby, Grafton; Lyman and Sylvia Bjerken, Grafton; Paul Fedje, Charter & Signed Articles of Incorporation, Grafton; Francis Chromy, Forest River, former director; Ethel Vejtasa and Thelma Thorvilson, Adams; Art Augustine, St. Thomas; Art Schumacher, Drayton; Mary Jane Makowski, Minto; Mrs. Tom Walker, Hoople, Charter; Mary Pollock, Huron, SD; Dan Bartholomew, Grand Forks, Charter.

Centenarians: Florence Sticka, 100, Lankin; Mary Rustebakke, 101, Lankin; Margaret Corriveau, 101, Grafton; Eleanor Cicha, 103, Park River; Gina Vigen, 104, Adams.

First American Bank, Grafton celebrates 100 years of service

The First American Bank and Trust of Grafton, member of the Bremer Financial Corporation, has provided 100 years of service to the community, 1892-1992. The bank has operated under various names over the century and there are several branch banks serving the area. Several gatherings have been sponsored by the bank commemorating its centennial in 1992.

Band leader Welk dies

One of the greatest television entertainers and North Dakota native Lawrence Welk died on March 17, 1992 in California. Welk was born in Strasburg, ND. His 30 years as a TV bandleader and now re-runs continue to bring pleasure to many. His music will live on. The Welk family has given music, instruments and music memorabilia to the North Dakota State University, Fargo, to share with his many fans.

Historical museum report for 1992

The doors of the Walsh County Historical Museum in Minto, ND opened wide this spring to welcome its first visitors of the season in early May. An annual tradition of the past eight years has been to send invitations to area schools encouraging teaching staff and students to schedule field trips in the spring. Not only do the students enjoy the historical and factual information that can be gleaned from such a visit; but they especially like imagining what the lives of their ancestors were all about as they view turn of the century and early 1900s displays. Often an elementary student on tour will point to an interesting object, asking "What's that?" only to be informed that it's a washboard, icebox, butter churn, or even a threshing machine! The younger students often inquire as to how great-grandma and great-grandpa survived without a microwave oven, VCR and dishwasher!

This year, school tours were scheduled from May 7 to May 20 with groups as small as 30 students or as large as 110 students. A total of approximately 500 students, teachers and chaperons visited the museum grounds and buildings under the helpful guidance of volunteer tour guides. We extend a special thanks to these tour guides who patiently guided and instructed the students groups: Frank Schiller, Chester and Ruth Gornowich, Dolly Nar-

lock, Linda Dunnigan, Amby Wysocki, Madeline Schanilec, Mary Osowski, Evelyn Kilichowski, Karen Ebertowski, Mickey Schlosser, Peggy Kowalski, Clem Houdek, Joan Schanilec, Sophie Michalski, Aurelia Christie, Nadine Schanilec, Gloria Koltes and Mary Tweten.

Of course, in addition to the early bird visitors in May, the museum was a popular tourist stop throughout the summer. The museum is open each Sunday from 2-5 p.m. from Memorial Day to Labor Day. Tours can also be scheduled by contacting Stephanie Prepiora or Frank Schiller at any time during the summer months. Approximately 600 registered at the guest book and spent a leisurely afternoon reliving the past. A big thanks to all the dedicated individuals who manned the museum on Sundays!

Most of the "main street businesses" at the museum have remained the same over the past year. Additions have been made to the wildlife rooms recently. With the acquisition of an elk and antelope, the three wildlife areas now boast a near full collection of all animals indigenous to North Dakota. A big-horned sheep is still needed. Also, a very interesting and extensive collection of World War II Nazi memorabilia was recently donated to the museum by Mrs. Charles Matcha of Grafton in memory of her hus-

band. The items were collected by him during his tour of duty in Germany.

In October, the museum was visited by a group of East German students. They were in the U.S. under the auspices of the late Senator Quentin Burdick and the University of North Dakota to study our American culture. The students also toured St. Stanislaus Catholic Church in Warsaw, the Ed Stoltman farm of rural Warsaw, the Alchem plant in Grafton, and the Heritage Center in Bismarck during their stay in North Dakota.

The current officers and board members of the Walsh County Historical Museum are as follows:

1992

WALSH COUNTY HISTORICAL MUSEUM MINTO, N.D.

Officers and Board Members

Curator/Manager — Stephanie Prepiora

OFFICERS — 1 year terms

Chairman — Frank Schiller (1994)

Vice-Chairman — June Selseth (1994)

Secretary — Joan Schanilec (1992)

Treasurer — Ted Barta (1994)

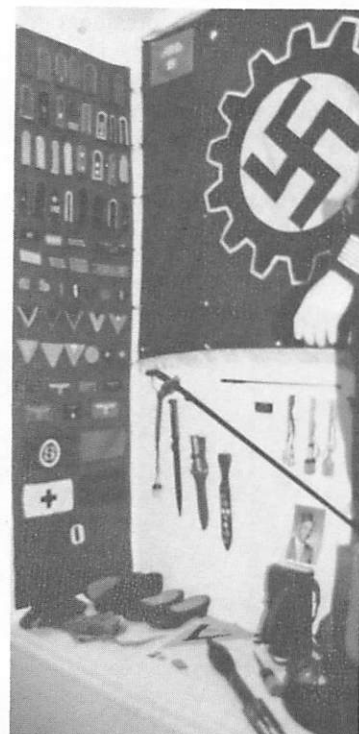
BOARD MEMBERS — 3 year terms

1 — Linda Dunnigan (1992)

2 — Terry Nowling (1992)

3 — Joyce Boeddeker (1992)

4 — Donald Rudnik (1993)



The newest display at the museum is WW II memorabilia collection given by Mrs. Charles Matcha in memory of her husband, Charles, who was an active member of the Historical Society.

5 — John Gudajtes (1993)

6 — Theofil Kilichowski (1993)

7 — Chris Misialek (1993)

8 — Les Jallo (1994)

The dates following the names refer to the year that the director's three year term expires.

Life memberships in Historical Society — First 25 years

Listed below are individuals who became life members of the Walsh County Historical Society over the past 25 years. A life membership is \$100. The money is kept in a special fund with interest going into the general fund of the society.

Dr. John Lipinski, Kalispel, MT; Louis Wisniewski, Minto; W.L.A. Grain, Minto; J.D. Miller, Minto; Alphonse Koehmstedt, Grafton; Mrs. Alphonse Koehmstedt, Grafton; Mary Koehmstedt, Oregon; Borghild Wollan, Washington, D.C.;

Myrtle Schrank, Grafton; Roy Mohagen, Grafton; Elvin Kiele-

& Sons, Inc., Grafton; Olaf Johnson, Park River; Judith Ritzel, Colorado; Mrs. Percy Walstad, Park River; Voss Grain Co.; Lorraine Paulson, Hoople;

Robert Burke, Grafton; Runa Monson, Grafton; Henry Lundene, Adams; Mrs. Henry Lundene, Adams; Carl J. Paulson, Hoople; Lutheran Sunset Home, Grafton; John Paulson, Hoople; Mary Nancy Williamson, Texas;

Mrs. Cora Paulson, Hoople; Mrs. Hazel Johnston, Grafton; Grafton Post 9367, VFW, Grafton; Rolf Wollan, Texas; James Reid, Minnesota; Wade Swenson, Moorhead; Woodrow

Hulstrand, Fairdale; Walsh Pioneer Daughters;

Minto Farmers Elevator; Francis Phelan, Grafton; Mrs. Ethel Mohagen, Grafton; Victor Stoltman, Minto; Lois Kiele, Grafton, L.S. Jensen, Edinburg; Mrs. Bertha Jensen, Edinburg; Edith Monson, Grafton;

Gary Babinski, Minto; Dean Flanders Mobil Oil, Minto; R.F. "Pete" Matejcek, Lankin; Mrs. Ella Matejcek, Lankin; Olive Tweten, Grafton; Charles Stewart, Grafton; Theofil Kilichowski, Minto;

Willard Hove, Grafton; Mrs. Marie Hove, Grafton; Dr. H.R.

Piltingsrud, Park River; Ora Marie Stewart, Grafton; Dr. S.W. Lipinski, Florida; Denny's Jack & Jill, Grafton; Dr. Joyce Danielski Kates, Hershey, PA; Lennart Almen, Park River; Mrs. Donna Robinson, Burnsville, MN;

Jean Bodmer, Mesa; Judge James O'Keefe, Grafton; June Kraft, Bismarck; Stephanie Prepiora, Minto; Anastasia Curran, Plentywood, MT.

If you wish to become a life member, mail \$100 to Emma Lou Minden, Grafton, membership chairperson.

Celebrates, continued from front page

ing. Vice president, John Paulson, was then elected president in 1989 and continues in that capacity.

Plaques were presented to three individuals for serving in one capacity for at least 15 years and they are as follows: Lorraine Paulson, newsletter editor and corresponding secretary for 18 years, 1974 - '92, Stephanie Prepiora, membership chairman

for 16 years, 1972 - '74 and 1977 - '89; and Jean Bodmer, recording secretary for 15 years, 1971 - 1985.

A large cake decorated with a replica of Fort Alexander Henry was served following the program. The programs were designed and printed by Lois Eisenrich listing the charter members and first officers and directors.



Heritage Village had busy schedule in 1992

There have been many activities and events at the Heritage Village in 1992. There have also been many improvements and additional displays added.

Charles Lambrecht serves as chairman of the village board; Ralph Adamsen, vice chairman; Mary Rose Rodrigues, secretary; June Capouch, treasurer and C.W. "Jake" Jacobson, village manager. There is also a board assisting the officers.

During the summer months, the village is open for tours on Sunday afternoon or by appointment. The theater building is also available for reunions, other gatherings and special events. For further information contact Jacobson. The Heritage Village officers and board members would like to thank those who volunteered time and those who contributed displays and various items for the Village.



Janelle Davis and Peggy Dahl Bartunek provided musical entertainment at W.C.H.S. anniversary gathering.

Attention Members

This is the fourth year we have enclosed our membership card for the new year in the newsletter to cut down on postage for returning the card to you after you pay your membership dues.

In 1992 we had 409 paid regular memberships, 26 business and six new life members for a total of 61 life memberships.

We need your participation and financial support more than ever due to increased expenses. For example, just insurance and liability take a big bite out of our revenue, not mentioning utilities.

We have kept our regular membership at \$3.00 for years in order to reach more people but if you feel you would like to purchase a business membership for \$10.00 it would be greatly appreciated. You in turn will receive a certificate.

A self-addressed envelope is enclosed for your convenience. Hope to see you at a meeting in 1993.

Emma Lou Minden
Membership Chairperson
430 Eastern, Apt. 2
Grafton, ND 58237

Time To Renew 1993 Memberships

Renew your 1993 memberships. We would appreciate it very much if you would take a few minutes of your time to mail your yearly dues. We are enclosing your membership card for 1993.

ANNUAL REGULAR DUES \$3.00 per person
ANNUAL BUSINESS & INSTITUTIONAL . . \$10.00
LIFE MEMBERSHIP \$100.00

Your support helps sustain our Society.

Emma Lou Minden, Membership Chairperson
Walsh County Historical Society
430 Eastern, Apt. 2, Grafton, ND 58237

Editor — LORRAINE PAULSON

Non Profit
U.S. Postage
PAID
Permit No. 1
Minto, N.D.

All four volumes of the "Walsh Heritage" books are now available for \$20 while supply lasts. Can be picked up at the Heritage Village, Grafton, or First State Bank, Park River. (Add \$10 if books have to be mailed.) Vol. III & IV also available separately at \$2 each.