

"Museum Alive" Celebration Held

By ORA STEWART

The Minto Museum Board played the role of a fairy god-mother and waved a magic wand (not without a great amount of prior planning and hard work, however) on a pleasant Sunday afternoon in July. And the museum became alive.

At the magic moment, 2:00, lines of people began to form at the gate to the museum grounds. During the afternoon over 1,000 persons either watched or took part in an enchanting re-actment of a summer afternoon "way back when."

Sounds of a 1920 jazz tune played on a Victrola, the whine of a cream separator, the whine of a cream separator, the snappy tune of an old time fiddler and accordion player mingled with the happy voices of friends greeting friends.

In the yard people milled around a rope-maker and blacksmith demonstrating their crafts; children were wide-eyed at a puppet show, and visitors circled alternate performing groups of young people either doing Polish folk dances or songs and dances chanted by school kids.

The smell of good midwestern cooking mixed with that of brewed coffee came from the cook car where thresher-sized hunks of cakes and other good things were dished up. A cake of the 1930's called Depression Cake was a flavor treat for those who remembered and also for those who did not.

A petty theft took place in the general store. While the clerks were busy selling merchandise a mischief maker swiped a dill pickle. The local constable, who looked a lot like a Keystone Cop, threw the culprit in the hoosegaw — translation: Conway Jail.

The magic of the afternoon breathed life into every corner of the museum. The reproduced main street stood ready for business. Ice cream cones were sold for a nickel at the ice cream parlor, stick candy at the old drugstore, popcorn from an old-fashioned popcorn wagon, and penny greeting cards from the post office. The mysteries of the

cream testing station, the village barber shop, and the mechanical skills used in working steam powered farm machines and those new fangled gas engines were unraveled for the eager crowd.

The dexterity of the homemakers of an earlier time was repeated by today's homemakers when they showed how to braid rugs, quilt, spin, card wool, and paint china.

At 5:00 the magic spell ended. The museum returned to a deep sleep, perhaps to be awakened on another summer's day.



On-duty for "Museum Alive" are Frank Schiller, Forest River, Chairman of the Museum Board; Henry Lundene, Adams, and Ed Gudajtes, Minto.

Church Placed On National Register

On August 10 the Walsh County Historical Society and St. Stanislaus Parish in Warsaw received telegrams from United States Senator Burdick informing us that the St. Stanislaus Catholic Church had been placed on the National Register of Historic Places.

Former State Representative Henry Lundene, Adams, and the Walsh County Historical Society prepared a proposal in 1978 to have this church included on the list of National Historic Places.

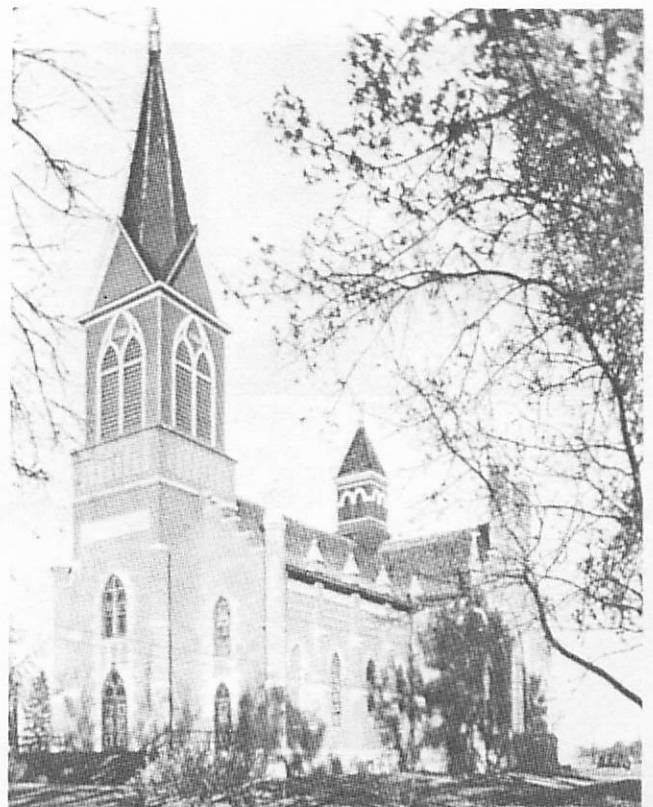
This large, beautiful, brick church with stained glass windows was built in 1900 and dedicated in July, 1901. It seats approximately one thousand one hundred.

The entire community was saddened when the church was seriously damaged by a fire believed to have been caused by defective wiring or a short in the church basement in October 1978. For months an extensive restoration project has been taking place at St. Stanislaus with carpenters, plasterers, glass workers, painters working to restore the church to its original beauty. The restoration cost was over three hundred thousand dollars.

This summer the Polish Community of Warsaw, Parish Priest Father Duda, and his congregation extended an in-

vitation to Pope John Paul II to come to the parish. Warsaw, N. D., was not included in his itinerary but Father Duda and other people from Walsh County went to Iowa to see the Pope.

Walsh County is happy and proud that St. Stanislaus Church has been placed on the National Register of Historic Places in '79. Plan to visit this church and congregation sometime.



St. Stanislaus Catholic Church, Warsaw, N.D., "Cathedral on the Prairie."

Historical Museum Continues To Grow

By Stephanie Prepiora

The pulse of growth of the Walsh County Historical Museum in Minto continued and continues in 1979. New acquisitions, donations, ideas, changes in displays, structural and artistic changes are all taking place simultaneously, adding to its progress. All of this made possible by a CETA grant which helps defray cost of labor only, by financial help of the Walsh County Historical Society and by special events and admission fees at the museum and much by the voluntary efforts of the museum board and its many friends.

While we were approved by CETA for a labor force of three much of the time, the Job Security office, through whom all CETA workers must be approved and hired, was able to find only two eligible workers, a man and a woman. As a result, changes had to be made in our plans and we

were forced to abandon the idea of restoring the ceiling and walls of the entrance area. However, CETA approved an extension of time for our workers from September 30th to October 31. Presently we have three employees, two men and one woman. Since we can heat only one room at a time, they are working on completely restoring all the walls of one large room and building; enclosed, individual areas for the display and safe keeping of valuable articles.

For better visibility, electric lighting was installed in the cook car, one room school and log cabin, all placed inconspicuously so as not to destroy their original appearance.

Artistically, the murals in the "Main Street" room were completed adding much to its appearance.

During the year, a smaller room was converted into a

"Communications Room," displaying the original telegraph equipment from the Minto depot, still in working condition, also a large variety of telephone boxes some very old; others more recent, and a few very ornate, as well as a number of early radios. Other articles housed in this room are a large display of early woodworking tools, early typewriters and one of the first computer machines made.

During the time the museum is open for visitors, from Memorial day through Labor Day if weather permits, we had over a thousand guests, some local as well as from other states and Canada — this number exclusive of "Museum Alive" day. Many groups came by special appointment such as grade and high school classes, Homemakers clubs, State School and Lutheran Sunset residents and other clubs. We were especially pleased to see

directors of surrounding museums who had heard about the one in Minto and came to see for themselves. After viewing the museum and its various orderly displays, the overall remark by most was "this is fabulous, I, or we, had no idea such a place existed in so limited an area as Minto," — being only human, the words were music to our ears.

The big event of the year was "Museum Alive" day which carries its own story in this newsletter.

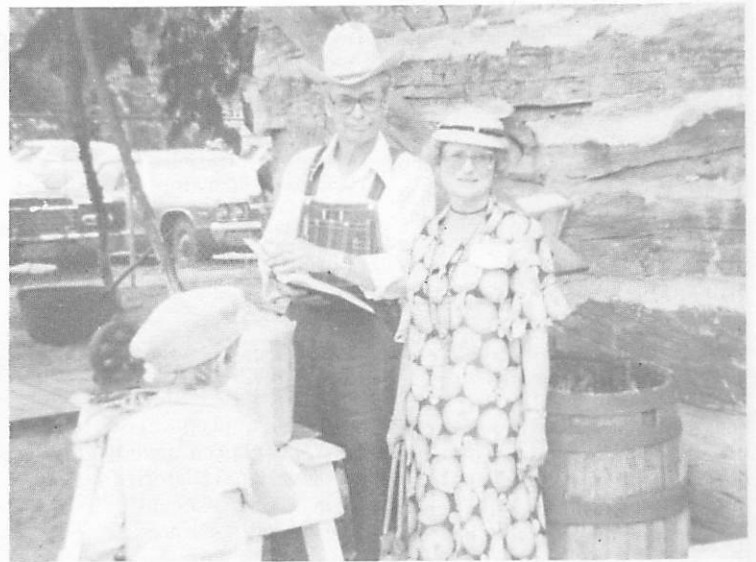
Listed here are only the major accomplishments of 1979. Many other improvements were made both inside and on the grounds.

The Museum Board gratefully thanks all who participated in any manner whether by donation of articles, physical or financial help, suggestions or words of encouragement, which helped make the growth of the museum possible.

Scenes From "Museum Alive"



The Museum Alive celebration at the Walsh County Museum in Minto on July 1 was enjoyed by young and old alike.



Charles and Ora Stewart, Grafton, taking part in activities at "Museum Alive" in Minto on July 1st.



Dancers entertaining at "Museum Alive."

Membership - Lest We Forget

By STEPHANIE PREPIORA

All membership renewals are due January 1, 1980. Start the year right by sending in your check to Stephanie Prepiora, Historical Society Membership Chairman, Minto, N. D.

Non members, but residents and non residents, whose roots are in Walsh County are urged to become members by sending in their dues to the above address so they too can proudly display their membership card as supporters of Walsh County Historical Society whose purpose is to

record and preserve for posterity your very own heritage and establish your identity.

Because history is a living moving thing, let us all give recognition and humble thanks to the men and women who, for the price of freedom, came here, established their roots, fought every conceivable hardship and won the battle and by their efforts and vision provided us with the good life we enjoy today. This and much more is not only our duty but our obligation as well.

It is no happenstance that the progress in the development and preservation of the heritage of Walsh County has made great strides in the short time of its existence but rather it is the result of the volunteer efforts of truly dedicated members of the Society. Results of their efforts can be seen throughout the county. Evidence of some of their accomplishments may be seen in the Alexander Henry rest stop on I-29, Heritage Village in Grafton, County Museum in Minto, log cabin in Adams, museum in Edinburg and other smaller but significant projects.

The two volume history and biographies of the early settlers of Walsh County is another achievement of the Walsh County Historical Society which covers a period from the early beginnings through 1930. Since history is made daily it is hoped, in the future, to update the history from 1930 to a more recent date so it will not be lost as, unfortunately, some of our very early beginnings have been.

These facts have been brought to your attention to emphasize to you your importance as a paid member of the society. The resultant revenue will help defray costs of further development. Note membership comparisons for 1977 when we were top in the state, through 1978 and 1979. Are you proud of where your community stands? If so, congratulations, if not this is the time to rectify the situation. We have evidence to substantiate the fact that this drop is not due to a lack of interest. Some can be attributed to apathy, some to procrastination but much by the fact that in the past, memberships were collected door to door by willing volunteers, some of whom have either passed away and others physically unable to do so. Soliciting door to door, in this large county, takes many volunteers which we lack, also endless time, hazardous walking, especially in winter, and the use of your car which at the present price of gasoline is prohibitive as compared to any monetary gains from such very modest dues. Therefore we ask that you SEND in your membership checks.

"Uncle Sam Needs You" is a familiar sign to all of us - "Walsh County Historical Society Needs You" could well be the motto of all of us whose roots are deep in Walsh County.

January 1, 1980, is our next date with History!

Farm Shop Donated To Village

A new addition to the Heritage Village in Grafton is an old pioneer farm blacksmith shop which was donated by Ruth and Walter Huebner, Denver, Colorado. Mrs. Huebner is the former Ruth Thompson, daughter of the late Mr. and Mrs. Lawrence Thompson of rural Park River.

The shop includes a forge, tongs, drill, grindstones, and many other items.

Mr. and Mrs. Huebner will pay for moving the building plus a two hundred dollar donation for additional work as needed - the shop had recently been reshingled and other repairs made. The society and village greatly appreciates such a generous gift.

Life Members Of Society

At the present there are eleven life memberships in the Walsh County Historical Society. You can purchase a life membership in the society by donating one hundred dollars and you in turn receive a certificate and help the society financially. These funds have been placed in a savings account for the society and every year we hope to enroll additional life members.

New life members in 1979 were: Roy H. Mohagen, Grafton, and Elvin Kieley and Sons, Inc., Grafton.

The first life members were enrolled in 1976 and are as follows: Dr. John Lipinski, Kalispell, Montana; Louis Wisniewski, Minto; W.L.A. Grain Company, Minto; and J. D. Miller, Minto.

Other life members are Alphonse Koehmstedt and Mrs. Alphonse Koehmstedt, Grafton; Borghild Wollan, Washington, D.C.; Mary Koehmstedt, Garhardt, Oregon; and Mrs. Myrtle Schrank, Grafton.

1979 WCHS MEMBERSHIP COMPARED TO 1978
17% of 1978

Area	1979	1978	1977	1976
Adams	17	24	37	
Ardoch	8	2	2	
Crystal	1	0	1	
Drayton	6	4	7	
Edinburg	21	18	36	
Fairdale	4	11	11	
Fordville	1	1	3	
Forest River	26	22	15	
Grafton	152	195	419	
Hoople	19	31	28	
Lawton	0	0	1	
Lankin	3	10	11	
Minto	93	112	123	
Park River	27	23	341	
Pisek	3	6	8	
Voss	3	6	8	
Out of County	11	18	22	
Out of State	36	45	47	
	<u>431</u>	<u>528</u>	<u>1120</u>	
Life Membership	2	1	4	4
Total Life Members				11

1979 New Members

Roy H. Mohagen, Rt. 1, Grafton

Elvin L. Kieley & Sons Insurance, 119 E. 6th St., Grafton

On 4-19-79 a total of 264 businesses in the County were billed, names taken from telephone directory.

Business Memberships

Area	1979	1978	1977
Adams	0	1	0
Ardoch	1	0	0
Edinburg	1	0	0
Forest River	3	0	0
Grafton	53	41	79
Hoople	4	0	0
Minto	6	6	6
Park River	10	0	3
Voss	1	1	1
Fergus Falls	0	1	1
	<u>79</u>	<u>50</u>	<u>90</u>

Number of Firms Billed:	Response	Voluntary or Solicited
Edinburg	0	1 Voluntary
Ardoch	1	1
Grafton	137	53 4 voluntary, 0 solicited
Hoople	39	4 0 voluntary, 0 solicited
Minto	11	6 6 solicited
Park River	73	10 0 solicited
Voss	3	1 0 solicited
Forest River	0	3 By personal contact of
	<u>264</u>	<u>79</u> Frank Rose

Total Business Members 79



1979 Summary Of Historical Society

1979 has been another active year for the Walsh County Historical Society. There were eight general meetings, and three executive meetings, an Emerald Isle Dinner and Program on March 17th at the Grafton American Legion, "Museum Alive" on July 1 at the County Museum in Minto, Norwegian Worship Service and coffee time on August 12th at the Heritage Village and antique display and sale in August at the Heritage Village in Grafton.

At the January meeting at the County Extension Office in Park River officers and directors for 1979 were installed and annual reports were given. Officers and directors who will serve for the year were installed and they are as follows: president, Pete Matejcek, Lankin; vice president, Ed Gudajtes, Minto; treasurer, Leonard Jensen, Edinburg; recording secretary, Jean Bodmer, Hoople; corresponding secretary and publicity, Lorraine Paulson, Hoople; directors — Kay Vang and Charles Stewart, Grafton; James Johnson and

Henry Lundene, Adams; Walter Gerszewski, Warsaw; Francis Chromy, Forest River; Ella Gillham Matejcek, Lankin; John Paulson, Hoople; and Stephanie Prepiora, Minto.

The February meeting was held in the Farmer's Room at the County Courthouse in Grafton and plans for the year were discussed.

An executive meeting was held in March at the Cenex meeting room in Park River.

The March meeting was held at the Walsh County Extension Office in Park River. The society voted to donate one thousand dollars to purchase tables for the Walsh Heritage Village in memory of Mrs. M. C. (Winnie) Flaten, Edinburg, a charter member of the society and chairman of the Walsh Heritage Book Committee.

It was announced that the county museum and heritage village were awarded CETA Grants to cover labor for summer projects. (CETA Grants cannot be used to purchase materials.)

A memorial tribute was read for Miss Elizabeth Rolzinski, Minto, an active member of the society who helped organize the museum in Minto and organized life memberships for the society.

A hundred dollar memorial in memory of Julia Uggerud, Grafton, was given by her family to be used for the Landstad Church in the Heritage Village.

Kurt Schweigert, representing the State Historical Society, spoke to the group at the April meeting at the extension office in Park River about a survey being conducted in the area in 1979 to locate structures or sites for possible nomination to the National Register of Historic Places.

The May meeting was held in the depot at the Heritage Village in Grafton. A tribute to John L. Johnson, Park River, was given. For years he volunteered his time and walked many miles to collect memberships in the Park River area for the historical society.

On July 1, "Museum Alive" was held at the County Museum in Minto, a separate article on

this special event appears in this newsletter.

An executive meeting was held at the county courthouse in Grafton in July.

A potluck picnic was held at the Pioneer Memorial Gardens at the Homme Dam west of Park River in July. The society president, Pete Matejcek, and his recent bride, Ella Gillham, who is presently serving as director of the society, were given corsages and a wedding cake which was served to the group in their honor.

Ruth and Walter Huebner, Denver, Colorado, and former Park Riverites, donated a typical farm blacksmith shop with numerous old tools to the Heritage Village in Grafton.

Zion Church, rural Hoople, donated an old piano to the village.

No meeting was held in August since the Northeast North Dakota Pioneer Machinery Association held a threshing bee and machinery display in Park River on the regular scheduled meeting date of the historical society.

There was also no scheduled meeting in September but an executive meeting was held in Adams on Sunday, Oct. 7th.

And, on Sunday, Oct. 28th, a meeting was held at the village depot in Grafton. Clifford Grove, Adams, donated an old gas restaurant range to the society and it has been hooked up in the Ethnic Theatre Building. The grill on this range would be ideal for a pancake meal — maybe next year.

The November meeting was held at the home of Jean and Raynold Bodmer, Hoople. Officers for 1980 were elected.

Thanks to all the women who served lunch following the meetings. Also thanks to those who pulled the historical float which is a replica of the Bakken Sod Hut in area parades. And, Mrs. James (Otella) Johnson, Adams, is doing a great job keeping the society scrap book up-dated.

Your participation and support of the Walsh County Historical Society is greatly appreciated and we hope you can attend some of the meetings in 1980. Try to renew your membership dues because your financial support helps the society maintain its present projects and also continue to grow.

Thank you,
Lorraine Paulson, Corr. Sec.

Red River Land North Dakota

Red River Land North Dakota, formerly The Eastern North Dakota Valley Heritage Commission, was organized in 1975 as a non-profit organization whose members included Richland, Cass, Barnes, Traill, Grand Forks, Walsh and Pembina Counties. The Board of Directors consists of three members from each county. At present Mrs. Erwin Sagan of Niagara, Central Valley Vice-President, is acting president. Other officers are North Valley Vice-President, Kathryn Grube of Pembina; South Valley Vice-President, Ken Larson of Fargo; Secretary, Tom Elliott of Valley City; Treasurer, Stephanie Prepiora of Minto.

Red River Land North Dakota has a tri-fold objective: (1) to promote tourism in the Red River Valley (2) to aid member counties in their development of heritage-orientated tourism attractions (3) to coordinate and assist member counties with their activities.

To promote tourism in the Valley, the Red River Land Traveler's first edition was published in June, 1979. With a circulation of 32,000, the magazine was distributed by

museums and tourist centers throughout the Valley and Western North Dakota. Contributions of articles and ad sales came from various historical centers and localities. The Red River Land Traveler received public acceptance and encouragement for future editions. Letters and phone calls from libraries and individuals indicated the need for a publication of this type.

To aid member counties in their development of heritage-oriented tourist attractions, Phase I of the planning has been completed by most centers. Phase II is in the planning stage. Emphasis is on architecture, environment and interpretation of the selected theme. Upon a completion of the centers, a network will be formed, with each locality interpreting its past, present, and future culture and heritage.

To assist member counties, the staff of Red River Land North Dakota keeps informed concerning Valley activities, available grants and other items of interest to its members. This information is provided to the network centers.

Through the efforts of member counties, the Board of Directors, and the staff of Red River Land North Dakota, the culture and heritage of our Valley will be relived and observed by numerous travelers.

Heritage Books Still Available

The "Walsh Heritage" books are still available. The two hard covered volumes with twelve hundred pages of area history — in pictures and writing — includes the history of Walsh County, villages and towns, schools, churches and families.

These books will make an ideal Christmas gift for family, friends and relatives, and the books will become a family keepsake.

Books can be ordered by mailing twenty-two dollars, which includes postage, to Leonard Jensen, Edinburg, North Dakota 58227; James Johnson, Adams, North Dakota 58210; or Walter Gerszewski, Minto, North Dakota 58261. Books are also available at the Walsh County Bank in Grafton or the Citizen State Bank in Park River.

Emerald Isle Dinner Well Received

If you missed out on the Emerald Isle Dinner on March 17th at the Grafton American Legion you have reason to be green with envy. A delicious Yorkshire beef dinner was served for two hundred and five and an entertaining program was presented.

Francis Phelan served as emcee. The welcome was given by Mayor Warner Taylor, Grafton; Top o' the Evening from Ralph Adamsen; Irish Blessing from Father George Lommell followed by Irish Remarks by John Donnelly. During the evening, Dan Aird, Osnabrock, played the bag pipes; Jill and Jane Goodall,

Langdon, danced the Highland Fling and Irish Jig; and John Zaharia, Pembina, brought laughter to the group with his comic routine. The program concluded with an Irish sing-a-long conducted by Amy Stewart and Esther Pessler.

Six nuns from Ireland who were visiting in the Grafton area were introduced. A door prize and several St. Patrick's Day Awards were given.

It was a delightful evening and from the many comments by those in attendance we hope to see a similar event next year.



Two Irishmen — John Donnelly and Francis Phelan.

Heritage Center Construction On Schedule

Bids were opened on September 29, 1978, in the State Capitol for construction of the Heritage Center in Bismarck. The low bids totaling \$7,933,100 were accepted by the Heritage Commission. John Larson Construction Company of Bismarck is the general contractor. The basic bids came within funds available and allowed construction of the building as designed, including a three hundred thirty-three seat auditorium.

Site preparations and construction began almost immediately in the fall of 1978 and continued through the winter. By June 30, 1979, the form of the building was taking shape and during the summer the work progressed at a steady pace. Optimistic projections of a possible September, 1980, completion dates are now being voiced by the general contractor.



Making plans for the British Isle Emerald Dinner are left to right: Charles Stewart, chairman; Homer Nelson, vice chairman; Margaret Bruce; Harold Harris, membership; Mary Rose Rodriguez, dinner chairman; Connie DeSautel and Dorothy Lykken, decorations; Jean Bodmer, dinner co-chairman. Not pictured are Margaret Phelan, secretary-treasurer; Ora Marie Stewart, program co-chairman; and Carol Zenk, publicity.

Two Plays Presented

Two plays were presented at the Ethnic Theatre. Neil Simon's "The Star Spangled Girl" was presented by Barry Lentz, Peggy Dahl-Bartunek and Lynn Peterson in July, and Noel Coward's "Blithe Spirit" was presented in November by the Far-Off Broadway group from Grafton High School.

Heritage Planning Meeting Was Held

In '79 plans were made for the development of an ethnic center to house ethnic displays at the Heritage Village in Grafton. A CETA crew salvaged the pavilion at Minto and hopefully construction can begin on a structure in 1980.

Several of the ethnic groups in the area have held meetings and selected officers to represent them in the development of a center.

Discussing plans at an ethnic development meeting for the village were: Ralph Adamsen, Grafton, and Pete Matejcek, Lankin, (seated). Jean Bodmer, Hoople, Henry Lundene, Adams, Charles Matcha, Grafton, John



Paulson, Hoople, Jim Lienhart and Kay Vang, Grafton. Board members for the village not

present were Wally DeSautel, Grafton, and Robert Burke, Grafton, legal advisor.



Mailing out the last newsletter were: (seated) Ella Gillham, Forest River, director; Lorraine Paulson, Hoople, editor. Standing: Kay Vang, Grafton, director; Mayme Gudajtes, Minto; John Paulson, Hoople, director; Ed Gudajtes, Minto, vice president; and Walter Gerszewski, Warsaw, director.



Clifford Grove, Selma and Henry Lundene, Adams, pouring coffee - Norwegian Gasoline - following the Norwegian Worship Service at the Heritage Village.



Ralph Adamsen (left), chairman of the Walsh Heritage Village, accepts a check for \$500 from Vic Mears, commander of the Grafton American Legion Post 41.



UFFDA! How can we possibly choose. All eyes are on the table selecting 'Norwegian Goodies' at the Village on August 12. Mrs. Leonard Jensen, Edinburg, serving. Left to right are Josie Sunderland, Otella Johnson, Oscar Sunderland, James Johnson, all of Adams, and Margaret Johnson, Grafton. Man in background is John Moen, Park River, who served as pianist.



Lynn Moerke (right) of the Grafton VFW Club recently presented a check for \$200 to officers of the Walsh Heritage Board. Accepting the gift are (from left) board member Wally DeSautel, treasurer Jean Bodmer and chairman Ralph Adamsen. The donation will be applied to a plumbing improvement fund. Recently the water and sewer lines were installed at the theatre building.

According to the committee's legal advisor, Robert Burke of Grafton, approximately \$7,500 will be needed to install plumbing and sanitary facilities in the building.

Use up to this time has been limited because of the lack of such facilities, and their addition

could attract small conventions or exhibits to the theatre, he said.

To date the group has been directing most of its appeals to charitable organizations and service clubs, but Burke noted wider community support for the project would be greatly appreciated.



BRIDE AND GROOM

Pete and Ella Matejcek were honored in July at historical meeting at the Homme Dam. When the society president marries one of the directors, it calls for a party.

A Survey Of Historical Societies In North Dakota

The State Historical Society conducted a telephone survey of the states eighty-one county and local historical societies in September 1979. A condensed summary of responses of the seventy-seven historical societies who were contacted are written-up below. One reason for the survey was to begin planning for the next biennium.

Specific questions were asked.

1. What are your society's most critical needs?

Five of the seventy-seven societies said they had no particular problems or needs at this time. This leaves seventy-two societies which gave one or more important problems and for fifty-eight of these groups, money was a significant need.

Obtaining funds with which to acquire or improve museum facilities ranked high on the list of needs. Five needed funds for loan repayment. Up to thirty groups which maintain museums are finding it difficult or impossible to meet general operating expenses. Second only to the need for additional money is the need for more public interest and membership involvement.

2. Do you anticipate meeting these needs? How and when? Of the seventy-two historical societies which reported critical needs, forty-five are unsure how they will meet their particular needs anytime in the near future. Twenty-seven are making plans to resolve their needs — membership and fund raising projects.

3. Where have you sought outside assistance in meeting your society's needs? Were you successful?

Fifty-eight of the organizations sought outside assistance. More groups sought and received financial assistance through the federally-funded Comprehensive Employment Training Act than from any other single source.

State government provides for the support of county historical societies by authorizing counties to levy up to ¼ mill for the promotion of historical work. Thirty-four county historical societies received funds in 1978 under this provision of the North Dakota Century Code.

Some county and local historical societies have sought financial assistance from private foundations, businesses and individuals, as well as civic, fraternal, and militia organizations. Groups were most successful

when soliciting money from individuals in their counties and communities.

4. How has the State Historical Society been most helpful to your organization in the past?

Five of the seventy-seven respondents felt that the State Historical Society had been of little or no help to their societies. Another nine state that they have not needed or asked for any help. Of the sixty-three who said that they have received help from the State Historical Society, forty-six found the information and advice to be most helpful; guidance in areas of organization, restoration, and museology were the subject areas mentioned most frequently.

Personal visits by State Historical Society staff, encouragement, resources and reference library, assistance in identifying historic sites and nominating significant properties to the National Register of Historic Places were also mentioned by numerous societies. Fourteen societies cited ideas and information they have obtained from *Plains Talk* and the exposure they have received through this publication as being most helpful.

5. How might the State Historical Society be of most help to you in the future? Seventy groups cited a variety of ways they would like the State Society to aid them in the future — more advice, information, and guidance. Information on grants and how to obtain them was the type of advice singled out most frequently; and advice related to museum work came in a close second. Sixteen said they would like to see the State go beyond offering information and become a source of grant funds for history related projects. Also mentioned were outreach programs, speakers, films and development of traveling museum exhibits.

6. How do you feel the State Historical Society and your organization can best cooperate to preserve the State's history as a whole?

Twenty-three of the fifty-one societies which did answer the question said that State and local societies can best cooperate by communicating by regular correspondence and meetings. Some felt the preservation and availability of local records and the publication of county and community history books should be a mutual concern to both. Also work with the State to identify

and preserve resources and knowledge of local interest and importance. And, assistance from the State in promoting public interest in and support for the work of local historical societies is important.

7. Do you feel your organization is fulfilling its responsibilities in your county or community?

Fifty-seven of the seventy-seven respondents said their organizations were fulfilling their responsibilities as well as they could. Lack of resources and

public interest were reasons cited most often for failing to meet obligations.

(In reporting these survey results, no specific conclusions were drawn, but these statistics and expressions of personal feelings provide some obvious indications of the needs of both county and local historical societies. A more detailed write-up of this survey can be found in *Plains Talk*, Fall, 1979, State Historical Society Newsletter.)



A full house marked the occasion of the old time Norwegian church service held at the Landstad Church at the Walsh County Heritage Village in Grafton on Sunday, Aug. 12.

Norwegian Service Held

The little white church in the village was filled to capacity when Norwegian Worship Services were held in the Landstad Church in the Heritage Village on Sunday afternoon, August 12, with Pastor Melvin Vettrus, East Grand Forks, Minnesota, as the speaker and Roy Mohagen, Grafton, liturgist. John Moen, Park River, served as pianist and Pastor and Mrs. Vettrus provided special music. Serving as ushers were Henry Lundene and Leonard Jensen.

Mrs. Leonard Jensen and Mrs. Henry Lundene were co-chairmen of the lunch committee. Norwegian 'Goodies' — lefse, krumkake, fattigmand, rosettes, and sand bakkels — were served following the service. Thanks to

everyone who donated baking for the coffee hour.

The service and lunch were sponsored by the Scandinavian Heritage Group. This was the first planned event in the beautiful little white church, and it is hoped that the Scandinavians will make it an annual affair and other denominations or nationalities will also schedule events in the church.

The following committee was in charge of this event — Thelma and Sylvia Wick, Mr. and Mrs. William Skjerven, Sr., all of Park River; Mr. and Mrs. Henry Lundene, Adams; Mr. and Mrs. Leonard Jensen, Edinburg; Nora Gryde, Hoople; Leroy Nelson, Roy Mohagen and Harvey Skjerven of Grafton.

History Of Walsh County Sites

Mary Ann Barnes Williams, Washburn, North Dakota, wrote an interesting 354 page book on the origins of North Dakota Place Names.

As editor of the newsletter, I selected the history of a few villages, towns, or sites in Walsh County, which I thought were interesting. Possibly you would like to read the book, Origins of North Dakota Place Names, Williams, Mary Ann Barnes, Bismarck Tribune Printer, 1966, January.

ADAMS: Early residents first named their village Sarles, for E. Y. Sarles, then Governor of North Dakota. When they learned that a post office in the state had already been given this name, they adopted the name of a post office that was moved into the village from two miles south, named Adams, for its township, which had been named by settlers from Adams County, Wisconsin. The post office was established June 23, 1890, with Erick T. Grove, postmaster. Adams incorporated as a village in 1906.

EDINBURG: A post office established on Sec. 5, Lampton Twp., three miles northwest of its present site, Nov. 1, 1882, in the general merchandise store of the postmaster, Christian Buck, was named by the Canadian Scotch settlers for a city of that name in Scotland. In 1887, when the Great Northern R.R. extended from Park River north, their townsite officials platted eight blocks of the present railroad townsite to which the Edinburgh post office was moved that year and

established with John E. White, postmaster, changing the spelling of Edinburgh to Edinburg.

GARFIELD: In the early summer of 1880, a party of Norwegian land prospectors from Iowa visited Walsh County, particularly the Golden Valley area. They returned to Iowa and sent a large number of their fellow countrymen to possess the land here. They settled in and about Twp. 157-56, naming it Garfield Twp. for the U.S. President, who during that year was assassinated. The post office named for the township was established Oct. 18, 1880, on Sec. 21, with Knute Levang, postmaster. When Park River was established in August, 1884, just seven miles east and south, the post office and all the residents of Garfield moved there except Simon Leach, owner of the land on which Garfield was established.

GRAFTON: This townsite was an incident of the railroad construction in 1880. The Great Northern was extending their line from Grand Forks and it reached Grafton in Dec., 1881. The first settler here was Thomas E. Cooper in 1878, who had only a squatter's right, because the land was not yet surveyed. The following year, more settlers squatted on claims adjoining his on the west. Cooper built a small hotel in which a post office was established in June, 1879, and he was appointed postmaster. He named the township and the office Grafton, for his wife's former home, Grafton County, New Hampshire. Grafton incorporated as a village in the spring of 1881; designated the county seat Aug. 30, 1881; incorporated as a city in 1883.

HOOPLE: Settlement began here in 1879 at the head waters of the North Fork of Park River. Richmond post office on Sec. 3, Glenwood Twp., served the area until this townsite on Allen Hoople's land in Sec. 5 was platted and the post office established here Jan. 7, 1890, with Merrit B. Bronson, postmaster. Hoople incorporated as a village in 1898.

LANKIN: Originally named Young for G. W. Young, a Park River lawyer and former teacher when the post office was established April 27, 1898, with John Matejcek, postmaster. The name was changed to Lankin on July 27, 1905, when John Lankin became postmaster and the

townsite was established on the Soo Line R.R. in Sec. 10 of Rushford Twp. Lankin organized as a village in 1908.

MANDT: A rural post office on Sec. 15, Fertile Twp., near the south branch of Park River established July 23, 1893, with Ole H. Wig, postmaster; discontinued May 21, 1903, and mail sent to Grafton. Named for Peter Mandt, who circulated the petition for the post office which was established in his store. Later he was appointed postmaster.

MINTO: This village on the Forest River was originally settled by Canadians and named for an Ontario town in Wellington County. The land upon which the village is located was purchased from James Wilson in 1881 by Comstock and White, townsite proprietors, who platted the townsite that year on Sec. 31, Harriston Twp. The post office was established March 15, 1881, with John O. Brown, postmaster; the St. Paul, Mpls. and Manitoba Railway reached here in the fall of that year also. Minto incorporated as a village in 1883.

NASH: A Great Northern R.R. loading station on Charles Hanson farm, where a settlement

grew and a post office was established July 11, 1891, with Charles Hanson, postmaster. It was named for the two Nash Brothers, local residents, who established a fruit store in Park River and wholesale houses in Grand Forks and elsewhere, later known as the Nash Finch Co.

PARK RIVER: Originally called Kensington for its township when established in Sec. 11 by Canadian-Scotch settlers of 1879 for a borough of London, England. The very first permanent settler was Charles G. Oaks, an employee of the Hudson's Bay Co., who came here in Nov. 1878. A colony of Scandinavians from Iowa settled here also in 1879. The post office was established April 28, 1879, with William McKenzie, postmaster. The post office was moved on July 11, 1882, to the home of Charles H. Honey, the postmaster. The Park River townsite was platted on Secs. 21 and 28, Kensington Twp., in the spring of 1884, and the post office moved here and renamed Park River Sept. 15, 1884, with Charles H. Honey continuing to serve as postmaster. Park River incorporated as a city in 1896. The river which flows through the townsite named it.

Antique Show A Success

The public showed good response when the Walsh County Historical Society held an antique show and sale at the Heritage Village in Grafton Saturday and Sunday, Aug. 25-26.

Seven dealers, two from Fertile, Minn., and one each from Minneapolis, Minn., Crookston, Minn., Thief River Falls, Minn., Casselton and Drayton, had items for sale during the two-day event. A table of donated items from Walsh County Historical Society members was also for sale.

The dealers were enthusiastic about the fair and stated they would return if another was held in late summer of 1980.

Time To Renew 1980 Memberships

Renew your 1980 memberships. We would appreciate it very much if you would take a few minutes of your time to mail your yearly dues and in turn, you will receive your membership card.

- ANNUAL REGULAR DUES.....\$2.00 per person
- ANNUAL BUSINESS & INSTITUTIONAL.....\$10.00
- LIFE MEMBERSHIP.....\$100

Your support helps sustain our Society.

Stephanie Prepiora, Membership Chairman
Walsh County Historical Society
Minto, North Dakota 58261

Editor - LORRAINE PAULSON

Non Profit
U.S. Postage
PAID
Permit No. 1
Minto, N.D.