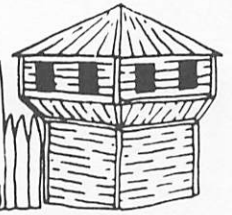


W

WALSH COUNTY HISTORICAL SOCIETY



VOLUME 4, NO. 1, DEC. 1977

WALSH COUNTY HISTORICAL SOCIETY NEWSLETTER

COPY 25 CENTS

10th Anniversary of Walsh County Historical Society

Several historically minded individuals laid the ground work for the Walsh County Historical Society which is now ten years old. A special meeting was called on April 7, 1967, and was held at the Community room of the Grafton National Bank for the purpose of forming a Walsh County Historical Society. Twenty-one

persons were invited. Father Hylden explained the purpose of the meeting. Father Hylden was elected temporary chairman and Eugenia Archer as temporary secretary. There was a motion to adopt Articles of Incorporation and they were filed.

The Organizational meeting of the society was held on Sunday,

May 7, 1967, in the Community room of the Walsh County Bank in Grafton. James O'Keefe presented the constitution and by-laws to the organization. The first officers elected were: Father Joseph Hylden — president; Henry Lundene — vice president; James O'Keefe — secretary; Jack Bannerman — treasurer.

The four directors elected were: Sig Jagielski, Winnie Flaten, Charles Zahradka, and Lena Koehmstedt.

The first committees and their chairmen were: Museum Committee — Father Hylden; History Committee — Mrs. M. C. (Winnie) Flaten; Historical Sites Committee — Henry Lundene; Publicity Committee — Mrs. Eugenia Archer; Ways and Means Committee — Charles Zahradka; Membership Committee — Jack Bannerman.

The purpose of the society is to bring together people interested in history and especially Walsh County history. The major function of the society is to discover and collect any material which may help to illustrate the history of the area; its exploration, settlement, development and activities; its progress in population, education, agriculture, transportation and other ways; and collect printed material such as histories and biographies of people, activities and places of the past and present. The society will provide for preservation of such material and its accessibility to the public and disseminate historical information and arouse interest in the past by holding meetings and publishing historical materials and etc. The society will also cooperate with the state historical society.

During the remainder of 1967 ground work was laid for the society. Mrs. M. C. Flaten

SEE ANNIVERSARY
Cont. on Page 3, Col. 4



Taxidermy Completed

Activity has been apparent at the Walsh Heritage Village in Grafton this summer and fall. Interior work has been completed in the William's Taxidermy Building at the Heritage Village. Some wildlife displays will be set up in the spring. The interior of the Landstad Church has been painted. Also partitions and a loft were constructed in the Donnelly Pioneer Log Cabin. In the spring the Walsh County Pioneer Daughters will help furnish the cabin as a pioneer home and additional furnishings are needed for the log cabin.

Under the Federal Green Thumb Program three workers — Fred Misialek, Barney Narlock and Isadore Lizakowski — have been and are still working at the village, and also during the summer the Ceta Program provided employees for work on the grounds. Charles Matcha, Grafton, has volunteered his services as a supervisor, and Ralph Adamsen serves as chairman of the board at the village.

On Display

A photograph of Grafton taken by photographer James Dean in March 1976 was included in the State Bicentennial Time Capsule sealed by Governor Link on July 29, 1977. The capsule will be on display in the new Heritage Center in Bismarck and will be opened on July 4, 2075. Items placed in the time capsule were those which reflected best the life in our time.



Pictured above are the members of the book committee. In the front row, left to right, are Winnie Flaten, Edinburg, chairman of the book committee, and Nora Gryde, Hoople, vice chairman of the book committee. Back row, left to right, are Leonard Jensen, Edinburg, treasurer of sales committee, and James Johnson, Adams, co-chairman of the sales committee. (Walter Gerszewski, Warsaw, is co-chairman of the sales and Ed Gudajtes, Minto, is secretary of the sales committee.)

Walsh Heritage Book Can Still Be Purchased

The historical society is pleased with the sales and favorable comments received on the historical books about early Walsh County. To date approximately 3,300 sets have been sold.

The two volume set of 1,200 pages of histories on families, towns, villages, churches and schools along with hundreds of pictures is still available. It would make an ideal gift for someone special at Christ-

mastime — a gift that will be treasured for years.

Books can be purchased in some Walsh County banks for \$20.00 per set or can be ordered from Leonard Jensen, Edinburg, North Dakota, 58227, or James Johnson, Adams, North Dakota, 58210, by enclosing a check for twenty two dollars which covers postage and packing. A real bargain at that price when compared with other books of similar size and quality.



Civic Museum in Edinburg maintained by Civic League.

Former Edinburg Church Maintained As Museum

Some of the earliest immigrants to the Edinburg area settled in Lampton Township east of the present town of Edinburg. Most of them were of Scotch-Irish descent as shown by names such as Adams, Shortridge, Cunningham, Fuller, Jamieson, Gemmill, McNeil, Glendenning, Patterson and Sheppard. Their church affiliation was Methodist or Presbyterian. Services were held in the homes or Weldon School from 1879 to 1886 when the Methodist Church was built in Edinburg. This was the first church in town — a historic site.

In 1902 the building was transferred to the United Presbyterian Church group through trustees William Brumwell, William Grant and J. B. Jamieson.

It was through this early period of settlement 1880's through the early 1900's that burials were made in the Lampton Cemetery which these church groups had established, and it is located one and one-half miles northeast of Edinburg.

After the early settlers moved away the cemetery was abandoned and neglected and two years ago a group of public spirited citizens turned out to recondition the Lampton Cemetery. The Langemo Cemetery, another abandoned cemetery northwest of Edinburg had been reconditioned by volunteer labor a year or two before. It was at the point that the Civic League offered to raise funds and accept memorials to defray the cost of mowing and upkeep of the two abandoned cemeteries. John Jamieson, the son of one of the

early Presbyterian Church members paid for a chain fence to enclose the Lampton Cemetery.

By 1916 the Presbyterian congregation having disbanded, sold the church building to the Civic League, a group of women who had built and maintained the Edinburg Park for over 60 years. The church property adjoined the park and was used as a meeting hall until 1973 when the Civic League donated the park to the city but reserved the use of the church building which was then remodeled and is now maintained by the Civic League as a local museum. Donations of fixtures from the Flaten Drug and donations by several interested individuals plus a small financial donation from the Walsh County Historical Society that was in accordance with the constitution, has helped the Civic League maintain this small hometown museum. It is open to the public on Sundays or by special appointment from May 30th through Labor Day. No admission is charged but a free will offering is acceptable.

Mrs. M. C. Flaten

LEADS IN MEMBERSHIP

There are forty-two county historical societies in North Dakota and approximately twenty-eight community or regional historical societies. The Walsh County Historical Society is proud to announce that the local society leads other historical societies in membership with a total of 1120 paid memberships in 1977. Your cooperation made this possible.

Yearly Summary Of Historical Society

1977 marks the 10th anniversary of the Walsh County Historical Society so this is a good time to look back on the achievements of the society and look ahead to the goals. This has been a busy year for the society.

The year began with the annual meeting and installation of officers at the Extension Office in Park River. Pete Matejcek has served as president in "77." Meetings are generally held the last Sunday of each month and are hosted by various communities in the county and everyone is most welcome to attend the meetings. The February meeting was held in the Pisek School. In March the meeting was held in the Walsh County Bank in Grafton and the film "To Till the Soil" was shown. The April meeting was held at the Fire Hall in Minto. In May the society met at the Legion Hall in Lankin. In June a brief meeting was held at the Sig Bakke farm near Adams following the tour in the Adams area. In July a potluck picnic was held at the Pioneer Memorial Gardens at the Homme Dam west of Park River.

No meetings were held in August because a threshing demonstration was held in Park River the last Sunday of the month so the society met September 4 at the Citizens State Bank in Adams and the Pioneer

Log Cabin in the city park was dedicated.

An open house at the Walsh Heritage Village in Grafton was held October 2 and the public could view the school, cabin, church, depot and taxidermy buildings. On October 30 the society met at the Legion Community Center in Hoople. The final meeting of the year was held in Fordville in November.

There have been two executive meetings of the officers and directors at the Extension Office in Park River.

Some of the hi-lites of the Historical Society in "77" were: the dedication of the Blue Star Marker at the Heritage Village in Grafton; the 9th area tour sponsored by the society which was held in the Adams area; the dedication of the pioneer log cabin in Minto; the county museum in Minto was chosen by the Red River Valley Historical Society to receive the Heritage Development Hall of Fame Award; the numerous old articles or antiques the society received to use in the county museum and Heritage Village; and the society has 1,120 paid memberships making it the largest county or regional historical society in North Dakota.

Lorraine Paulson
Corr. Sec.

Ethnic Groups Being Organized

Plans are to have the numerous ethnic groups who came to Walsh County and whose ancestors still live in Walsh County to organize and erect a little structure, display or building at the Walsh Heritage Village in Grafton to depict their culture to others in various ways.

Some groups have already been organized. Co-chairman of the Scandinavians will be James Johnson and Henry Lundene of Adams. Czechoslovakians will be headed by William Brodina and John Jelinek with Bertha Hodny as secretary and Stanley Bohac as treasurer. The officers of the British Isles group are Charles Stewart, president; Homer

Nelson, vice president, and Margaret Phelan as secretary-treasurer and they are all from Grafton. The Polish group will be organized by Ed Gudajtes of Minto. As yet, the German and French have not organized.

Funds are needed and some have already been raised. The Czechoslovakian Ethnic Folk Dancing Group of Lankin donated \$40 to start their fund drive. Oscar and Josie Sunderland donated \$70 which were the proceeds from those who visited the museum the day of the historical society tour in the Adams area. Your support and cooperation is needed to make these plans a success.

Pioneer Memorial Garden

By MRS. M. C. (WINNIE)
FLATEN

The latest addition to the number of historic sites in Walsh County listed under the Walsh County Historical Society is the Pioneer Memorial Garden at Grand View Point (south side) of the Homme Recreational Area two miles west of Park River.

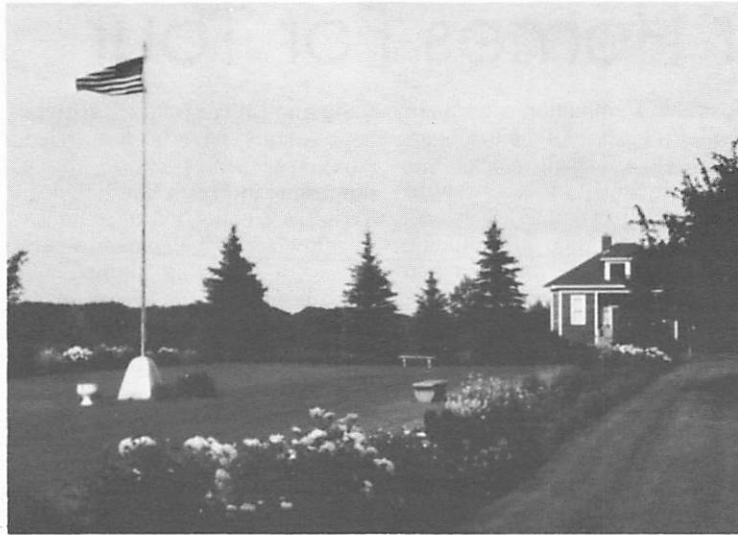
Although the Garden was dedicated in 1961, five years before the Historical Society was organized, the Society voted to add this to the list because it had been dedicated in memory of all the pioneers of Walsh County.

The Pioneer Memorial Garden is the continuous project of the Agassiz Garden Club and is maintained by the club with the help of the Walsh County Park Board and interested individuals who contribute in the way of memorials and the purchase of Pioneer Memorial Spoons offered for sale by the club and annual plant sales.

The original Memorial Garden was an area 75 x 150 feet and was landscaped by the late Harry Graves of NDSU in 1960 when planting began. An additional landscape plan was made by the landscape architect of the Corps of Engineers in 1972 and that plan has been followed in expanding the garden area by the planting of trees and shrubs.

The Agassiz Garden Club was organized in 1954. Then a plan for a continuous project of a Memorial Garden began but the club found that it was first necessary to establish a sponsoring agency for the maintaining of Homme Recreational Area before the Corps of Engineers would consent to establish the garden. From 1955 until 1958 the club solicited the help of various organizations in promoting the creation of the Park Board. In the fall of 1958, the County Commissioners created the Park Board, and the Walsh County Park Board has been most cooperative with the Garden Club.

Several individuals have given free services in the early stages of development. After the Garden Club joined the Federation of Garden Clubs in 1966, they received several cash awards for Community Beautification under Sears Roebuck Grants. Park River civic groups cooperated by sponsoring fish fries and community picnics. Individual donations were made for trees, sundial, benches and lily pond



Pioneer Memorial Gardens today with the Pioneer Hall, used for meetings, in the background.

and trees as memorials.

The Blue Star Marker dedicated to all who have or will serve in the U. S. Armed Forces as well as the Bird Sanctuary registered with the National Audubon Society have been Federation projects that added interest to the area.

The club pays the garden caretaker and helpers, plants and supplies for the garden. The Park Board instructs the park caretaker to take charge of the mowing and watering. Half the cost of many of the additional trees planted the last years was

shared 50-50 by the Park Board and the Garden Club.

The Pioneer Hall, a rural school building shown in the picture, was moved to the site in 1961 and is used as a meeting place. This fall a four table picnic shelter was constructed east of the hall in view of the dam structure. Four other picnic shelters overlooking the lake serve the picnickers in this garden area.

This beauty spot overlooking the lake is a fitting living tribute to all the pioneers who helped develop Walsh County.

Blue Star Marker Dedicated During Beet Festival Days

During the Beet Festival Days on June 11, 1977, the Blue Star Marker along state Highway No. 17 at the Heritage Village in Grafton was formally dedicated.

The Blue Star Marker is a program dedicated to the beautification of America's highways and a permanent tribute to all war veterans. 1977 marks the thirty-third year of the Blue Star Marker Program which extends over the United States. This Blue Star Marker Program was adopted by the National Council of State Garden Clubs as a living memorial to all men and women who have served, are serving or will serve in the Nations Armed Forces. Mrs. M. C. Flaten, Edinburg, is chairperson of the Blue Star Memorial Marker Program for the State Federation of Garden Clubs in North Dakota.

The Blue Star Marker takes its name from the blue star of the service flag. These markers are a

joint project of Garden Clubs and the State Highway Departments. Agassiz Garden Club was the sponsor of this marker in Grafton. Financial assistance was received from the W. W. I Barracks and Auxiliary, American Legion and Auxiliary, the VFW and Auxiliary, all of Grafton.

Special guests at the dedication in Grafton were Ellen Austin, representing the North Dakota State Highway Department, Wayne Lubenow from Fargo, the VFW and Legion Color Guards and their auxiliaries and the American Legion Band.

There are now five such markers in North Dakota. The first was at the Pioneer Memorial Gardens at Homme Dam near Park River; second one at New Rockford along Highway 281; the third at Cooperstown; one at the Washburn Rest Area and now one in Grafton.

Progress Report On Center In Bismarck

Plans have been approved for Phase I of the Heritage Center planning and construction, which includes tentative location of the building on the Capitol Grounds. Eight million five hundred thousand is now available for the construction and nine million is needed.

Architects will continue work on the specific details of the center with final plans completed by January 1, 1978. Bids could be let as early as next spring and construction is to begin early in the summer. Completion of the center is scheduled for mid or late 1980. According to the schematic designs we are going to have a three section building to meet the needs of the functions of the Historical Society — these include archives and book collections; space for museum exhibits, classrooms and an auditorium. The exterior design has not been completed. The architects are now into the design development phase, which will be completed this late fall or early winter.

Anniversary

Cont. From Page One

stressed the need and importance of key people in each community to gather information from available sources to be used by the society. Father Hylden spoke of the possibility of a museum in Grafton and other museums throughout the county. He suggested a pole shed for storage of various antiques, an old school, church, and other structures. The organization researched various means of finance. One means was membership and the types were: active, \$1.00; contributing, \$5.00; sustaining, \$5.00; institutional, \$10.00 and life, \$100.00. By October 26, 1967, they had 41 paid members.

The society was interested in learning more about various historical sites throughout the county. They gathered a list of original post office sites in the area.

The first annual meeting was held in October, 1967, and at that time the organization decided to add two directors, Gloria Thompson and Nels Midgarden. John Otto replaced Sig Jagielski as director and the other officers were re-elected.

Three Adams Area Families Open Their Homes For Tour

By LORRAINE PAULSON

Two hundred and fifty attended the ninth tour sponsored by the Walsh County Historical Society in the Adams area on Sunday afternoon, June 26th. A luncheon was served by the Senior Citizens at their center in Adams. Places visited were the home of James and Otella Johnson and their clock collection; Sig and Lillian Bakke and their antique collection; Oscar and Josie Sunderland and their private museum; the Mountain Lutheran Church and Bicentennial Plaque; and the restored log cabin in the city park and Bicentennial Plaque honoring former Mayor Rosendahl who helped establish that park in 1921.

The Adams area has many historically minded individuals and brief summaries of the three families who so graciously opened their homes and yards to the public for the tour. They are as follows:

James and Otella Johnson who literally live in a "House of Clocks." James began their clock collection about ten years ago. Since his retirement from the Johnson Store after twenty-six years, which he and his wife owned, they have been able to devote more time to this hobby. Otella also taught school in Adams. James related how as a young lad living with his Grandma Dahlgren in Adams he had made a tractor out of an alarm clock movement and it turned out to be so powerful it chewed a large hole in a rag rug. He has a unique collection indeed — the oldest clock is a two hundred-forty-year-old "Grandfather

Clock." His collection consists of mantel clocks, kitchen gingerbread clocks, wall clocks and "grandfather clocks" with Gilbert, Seth Thomas, Sessions, Ansonia and other movements. All the clocks are different and they said each clock becomes part of the family and soon the new chimes mingle in and they don't even notice the busy ticking and chiming. I noticed right away they said chiming and not striking. Ottella said it is a soothing noise that keeps the old home from being lonely.

James and Otella said they are auction fanatics although now it is not easy to find clocks reasonably priced and readily available anymore. James generally has to repair the clocks after they are purchased. It is a real challenge to see an old clock in need of repair and then maybe remove the old paint or varnish — often many coats and then see the lovely old wood glow with luster. James also enjoys doing research on old clocks — many were built originally in Europe over a century ago and they have an interesting history. Jim also makes clock shelves and has hopes of creating some new clocks of his own. Their other hobbies are yard work and gardening. They are also both very active in the historical society — Otella was in charge of the Adams area to gather and help write the "Walsh Heritage" book and James is co-chairman of the sales committee for the book and leads in individual sales of the book and he also serves as director of the historical society.

Sig and Lillian Bakke, farmers near Adams, have been married forty-six years and share numerous interests and hobbies. Their vast collection of antiques began when they decided to purchase a hanging lamp approximately thirty years ago. Now they own one hundred twenty-five hanging lamps — many of them are priceless — which they purchased at auctions for as little as fifty cents and some were given to them just for taking them home with them or picking them up. Many of the lamps were incomplete and they have restored them. They also have twenty-five "Gone with the Wind" lamps.

Lillian and Sig have antiques in their home, in a school house which was moved to their farm yard, as well as a workshop. Some of the antiques displayed are clocks, phonographs, nickelodeon, records, churns, copper ware, sewing machines, old tools, several spinning wheels, one belonged to Lillian's mother, and I could go on and on recalling interesting items they have.

Lillian said that dishes are her specialty. She has forty-five butter dishes and hundreds of other pieces of glassware. Due to limited space they have been unable to collect as many pieces of furniture as they would have liked to do.

In 1970 Sig began the construction of a half scale 65 Case Steam Engine. It took up much of his spare time for the next two

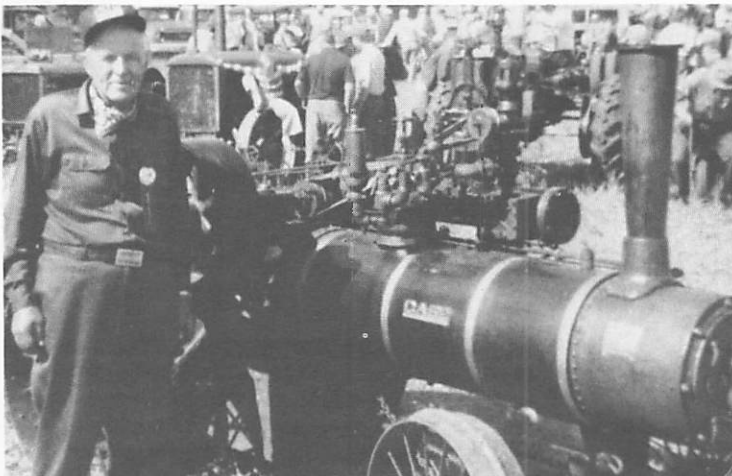


Oscar Sunderland standing near a showcase in their museum.

and a half years. He had parts casted and then machined. He got the idea of what parts to make to complete a steam engine from the pictures he had in a 1914 catalog. He made a trailer so he can take the steamer to local parades and shows. Sig won first place at the Northeast North Dakota Pioneer Threshing Show in Park River in August. Sig has also made a covered wagon. The first machine he made was a tractor with two cylinders and the parts were gathered from various pieces of equipment he no longer used. The Bakkes have five grandchildren in Park River and they have all enjoyed driving the tractor around the farm. Sig and Lillian's only child, Duane, also enjoys antiques and he has an interesting gun collection. Sig said he has also made trunks for his family. He enjoys repairing and refurbishing antiques as well as building them from scratch. His plans are to make a "grand-

MORE HISTORICAL TOUR

Cont. on Page 5, Col. 1



Sig Bakke, Adams, standing next to a hand-built steam engine replica.



Jim Johnson, Adams, and his clock collection.



Josie Sunderland standing in her museum of antiques.

Tour

Cont. From Page 4

father clock" in the future. Besides farming and antiques, Sig finds time for other hobbies — he has been a licensed ham operator since 1938. He has also done a lot of photography especially during their twenty-two trips to California. Sig and Lillian are active in church and community functions so with all their activities they have very few idle hours.

Oscar and Josie Sunderland have a private museum in the lower level of their home in Adams which they built when they retired from farming. Josie and Oscar share equally in maintaining this large private collection of antiques and artifacts. Oscar believes that he became interested in collecting when he was four years old and his dad brought an Indian battle axe into their home to show the family. This sparked a growing interest in the hobby of collecting antiques and artifacts. Oscar said he began collecting when antiques weren't as popular and costly as they are now. People just laughed at me for purchasing junk.

Some of their prized possessions are a spinning wheel which was brought to America by Mr. Sunderland's grandmother on a seven-week voyage from Telemark, Norway; Josie's rocking chair she had when she was a child; a large old desk made by Josie's father; and a rocker made by Josie's grandfather. Josie enjoys using her antiques to furnish her lovely home.

Oscar takes pride in his Indian artifacts such as battle axes, tomahawks, grinding stones, arrowheads and spear heads. In their museum they have a Pioneer Room which depicts the

home of our ancestors nearly one hundred years ago. Oscar also has a workshop where he repairs his antiques. The Sunderlands have been married fifty-one years and they are still active in their church and community. Oscar says that everyone should have a hobby and he certainly has a very worthwhile hobby. Oscar said it gives him great pleasure to clean and fix broken and dusty antiques. Oscar and Josie are also active members of the county historical society.

Commission Appoints Lundene

State Rep. Henry Lundene, D-Adams, was appointed to the North Dakota Heritage Commission in 1977.

Lundene is one of the founders and is immediate past president of the Walsh County Historical Society. He has served seven sessions in the House of Representatives and is county chairman of the North Dakota Heritage Center Fund Drive.

Reappointed to the commission was State Sen. Kent Jones of Webster. The commission will be directing the construction of the Heritage Center on the capitol grounds.

Other commission members include Gov. Arthur Link, chairman, Robert Cory, Minot, president of the North Dakota Historical Society, and Dean Conrad, state director of Accounts and Purchases.

Progress Of Little Theater Bldg.

Submitted by Ralph Adamsen

A short report on the progress of the Little Theater Building at the Ethnic Village site.

As you probably know, funds were received under the Local Public Works Act of 1976 for the construction of a Little Theater Building at the Ethnic Village. Final approval of this grant was received about a month ago. We were almost certain that the funding was going to be approved several months ago, but no final planning could be done until it was official.

The architects are presently working on the preparation of plans and specifications and will shortly be meeting with the County Commissioners and the Historical Society governing

board to finalize the drawings. It is necessary that this be done very soon because construction must commence by mid-December. In other words, it would appear that we can contemplate use of the building next summer.

There are several things that should be mentioned relative to this project. First of all, we are indebted to the County Commissioners for their fine cooperation at the Village. Then too, a lot of other people have been very supportive of the work. And finally, when this building is complete it is planned to serve many functions beside that of a little theater. Some day we will have a very attractive and inviting complex.



Historical Society Officers

Seated, Leonard Jensen, Edinburg, Treasurer; Lorraine Paulson, Hoople, Corr. Sec.; Jean Bodmer, Hoople, Secretary. Standing, Ed Gudajtes, Minto, Vice President; and Pete Matejcek, Lankin, President.



Historical Society Directors

Seated, Gladys Huseby, Fordville; Leona Walstad, Park River; Winnie Flaten, Edinburg. Standing, James Johnson, Adams; John Paulson, Hoople; Charles Stewart, Grafton; Walter Gerszewski, Warsaw; Henry Lundene, Adams. Absent was Lennart Almen, Park River.

Walsh County Historical Museum

By Stephanie Prepiora
Curator

The development of the Walsh County Historical Museum has made great strides during the period of its short existence. It now ranks with some of the best in the state. Rather than writing about what has been done, we thought you would enjoy seeing a few views of its contents. By no means do these pictures begin to tell the whole story—that would take most or all of the newsletter. Better yet, why not spend a pleasant summer Sunday af-



BLACKSMITH SHOP

The blacksmith—a mighty man is he as the poet Longfellow said—pumping the bellows and heating iron to create or repair the diversity of demands on his skills. The shop was designed and built by Frank Schiller of Forest River. The bellows were donated by Aurel DeSautel of Nash and the Flanders family donated the anvil together with the stump on which it stood when used by their grandfather in the early 1900's. Many of the other articles were donated by Theafil Kilichowski of Minto.

ternoon and see for your self, we think you will be pleased with what you see. In 1977 over 1100 guests from almost every state in the union visited the museum.

Beginning with Memorial Day, the museum is open every Sunday afternoon from 2 to 5 p. m. through Labor Day and during the week by special appointment. The museum has no heating system, therefore, the limited visiting season.

The Museum Board consists of: Frank Schiller, Chairman; Herman C. Schanilec, vice chairman; secretary, Carol Tibert; treasurer, Ellen Misialek; directors, Tony Osowski, Theafil Kilichowski, Bill Tibert, John Gudajtes, and Jim Schanilec.



WALSH COUNTY HISTORICAL MUSEUM COMPLEX

The former Minto grade and high school building dated 1895 has been converted into the Walsh County Historical Museum. Besides the main school building, the museum complex consists of an early jail, log cabin, a one room country school, a cook car and a huge quonset.



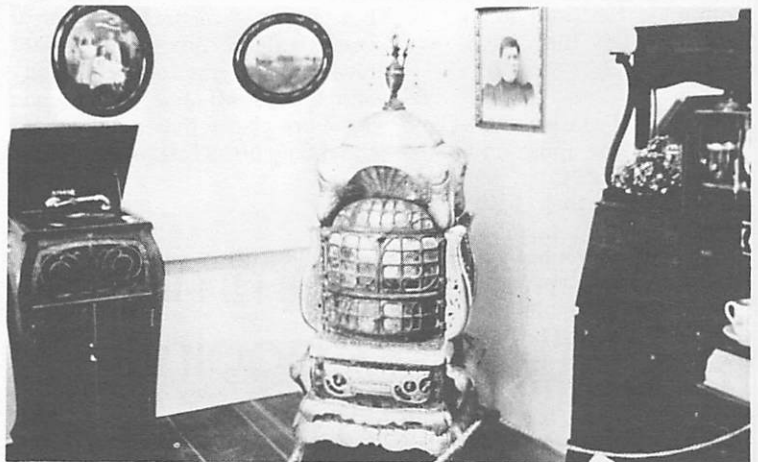
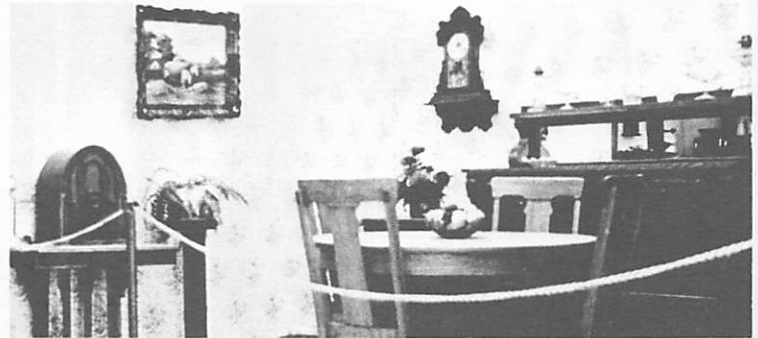
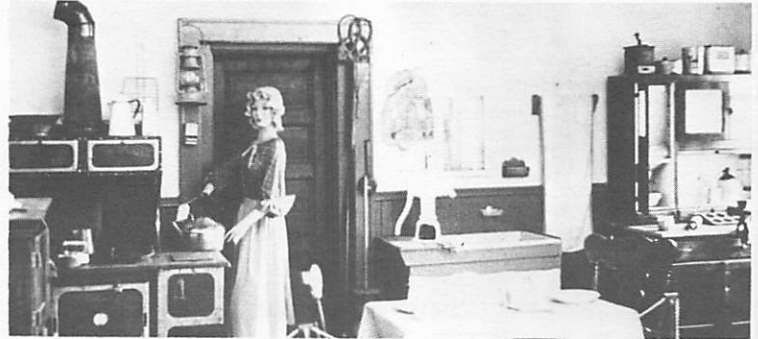
THE COUNTRY STORE

The country store supplied all the needs of the community including groceries, hardware, clothing, shoes, crockery, pots and pans and much more all of which are featured in our Country Store.

The variety of articles

displayed, as well as the volunteer labor for the physical construction of the store, were all donated by the many interested friends of the museum, space does not allow us to name each individually so we say "Thank You" one and all for your help.

PIONEER HOME



A fully equipped kitchen with all the amenities found in a middle income family. Stove donated by Frank Rose of Forest River.

The dining room features a round oak table, chairs, buffet and clock dating back to about 1910. Not shown is an early high-chair probably predating 1900.

Table, chairs, buffet and clock donated by Emma Przepiora of Minto.

An isinglass hard coal stove kept the family cozy during the long cold winter months. The phonograph furnished the entertainment, both donated by Andy Hultstrand of Fairdale.

THE QUONSET

This is a partial view of the contents of the quonset. Not shown are a number of antique cars, grain and potato planting and harvesting machines, cultivators, plows and many other articles which we hope to feature at another time. Shown is Minto's first fire engine donated by the city, a horse drawn hearse loaned by L. S. Jensen of Edinburg, a grain box donated by Theafil Kilichowski of Minto and a 1922

Rumely threshing machine donated by Frank Przepiora of Minto.





ANDY HULTSTRAND

Andy Hultstrand of Fairdale driving a 1914 Model T Ford some 50 miles to Minto which he donated to the museum along with a number of other vehicles, not shown here, which he also donated. The cars and other vehicles are only a part of a variety of valuable antiques donated by Mr. Hultstrand for which we are most grateful.

SOME GENERAL COMMENTS

Most all displays are direct gifts from interested citizens who wish to record the history of the area; some are loans. Full credit is given in both instances. The museum is financed partially by the Walsh County Historical Society, by special events sponsored by the Museum Board, donations from interested citizens, local banks and businesses and some from Federal grants. Much more money is needed to develop the full potential of the museum. All donations are gratefully received. Much credit for the growth, thus far, must be given to a small group of volunteers, both men and women, who spend endless hours in the planning and development of the museum.



ICE CREAM PARLOR
ICE CREAM ANYONE! An authentic early 1900 ice cream

parlor with all the trimmings donated by Mr. and Mrs. Charles Stewart of Grafton.

Sees Dreams Becoming Reality

(A brief summation taken from the closing remarks made by Henry Lundene, Adams, retiring historical society president, in December of 1976. Henry has been extremely active in the historical society the past ten years and has served in many capacities.)

In summation Henry sees dreams becoming a reality but there are still dreams for the future, which aren't impossible. Henry quoted Martin Luther King from a speech he delivered at the Jefferson Memorial when King said, "I too have dreams — challenging dreams but no more impossible than the tremendous tasks we already have behind us. Reality is apparent in establishing the Walsh Heritage Village in Grafton. We dream of the completion of the community center being planned in our ethnic village and dreams of the development of ethnic areas within this park where nationalities can demonstrate or display some of their heritage of their forefathers of which they can be justly proud.

I speculate on what more fantastic improvements will be made in our county museum in Minto to keep pace with what has already been accomplished.

"Walsh Heritage" book completed! ! This was an enormous project and thousands of hours of volunteer work went into these

two volumes — 1,200 pages in hard covers with hundreds of pictures and histories of families, towns, schools, churches, villages and etc., in our county. Now I dream of book number three as a supplement to these heritage books.

I dream of having markers erected in many places where the pioneers made history in Walsh County and this includes post offices, schools, stores and etc. I would also like to see the descendants of original homesteaders have their farms marked or designated as pioneer one family farms.

The accomplishments are the result of dedicated members, committee members, officers and the general support of the public.

Henry closed by stating "I would be something less than normal if I were not extremely proud and gratified in the progress our Walsh County Historical Society has made during the past two years and naturally I am happy I have been part of it." His closing sentence gives us all so much to contemplate and it is as follows: "Before I have you in dreamland I will close this rather lengthy observation of our organization that has grown very important to many of us and I surely hope and pray that it will not die with the generation that created it."

Largest Membership In State

By **STEPHANIE PREPIORA**
Membership Chairman

Membership in the Walsh County Historical Society for 1977 is 1,120, the largest county membership in the state. Membership such as this does not just happen but is the result of the concerted effort of a few dedicated members. One such member is John L. Johnson of Park River who for years in good weather and bad, has walked the streets of Park River collecting membership dues and thus maintained the highest membership in the county for that community. Charles Stewart of Grafton organized a membership drive, this year, in that city and along with his committee did an outstanding job in membership growth for Grafton and thus for the county organization. Devoted members in other communities of the county have also given generously of their time and effort in the membership drive —

thank you all for your wonderful cooperation.

Area memberships are as follows: Adams 37; Ardoch 2; Edinburg 36; Fairdale 11; Fordville 3; Forest River 15; Grafton 419; Hoople 28; Lankin 11; Lawton 1; Minto 123; Park River 341; Pisek 8; Voss 8; Out of County 30; Out of State 47.

There were four individual one hundred dollar life memberships in 1977; Mr. and Mrs. Adolph Koehmstedt of Grafton each bought a life membership; Mary Koehmstedt of Seattle, Washington, and Borghild Wollan of Washington, D. C. There were ninety, ten dollar business memberships and they are as follows: Grafton 79; Minto 6; Park River 3; Voss 1; Fergus Falls, Minn., 1.

All membership dues paid after Oct. 1, 1977, are for 1978. Why not help us by sending in your dues now. Your membership card will be sent to you by return mail.

MEMBERSHIP APPLICATION

Dues Schedule

Annual Regular Membership	\$2.00 per person
Annual Contributing Membership	\$5.00 per person
Annual Business and Institutional	\$10.00
Life Membership	\$100.00

Name: Mr. or Ms. _____

Address _____

City _____ **State** _____ **Zip Code** _____

Total Enclosed _____

Join now, help preserve the heritage of Walsh County.

Send dues to:

Stephanie Preplora, Membership Chairman
Walsh County Historical Society Minto, No. Dak. 58261

Museum Accepts Hall of Fame Award

The Walsh County Museum, a project of the Walsh County Historical Society, was presented with the Heritage Development Hall of Fame Award during the eleventh annual awards banquet of the Red River Valley Historical Society on April 29th.

The inscription on the award reads as follows: "In recognition of the dedicated efforts in the development of the museum and the importance of this facility in the preservation of Walsh County heritage, the RRVHS presents this 1977 Heritage Development Hall of Fame Award to the Walsh County Historical Museum."

The Walsh County Historical Museum was founded in 1970 by the Walsh County Historical Society. It is located in the former Minto School, which was built in 1895.

The museum has its own officers and board of directors, which are under the auspices of the Walsh County Historical Society. Since the acquisition of the original building, the museum complex has expanded

by the addition of a large quonset formerly used as a gym by the school, and by moving to the grounds a log cabin, jail, country school and cook car.

The original building houses a country store, blacksmith shop, pioneer home, wildlife room, doll display, pictures, clothing and many other articles from pioneer days.

Presently an early 1900 ice cream parlor with all the accoutrements of that day is being built. The quonset is filled almost to capacity with farm machinery and vehicles including a 1922 threshing machine, a reaper, early drills, potato planting and digging equipment and much more.

The museum is funded partially by the Historical Society, museum fund raising events, private contributions of organizations and individuals and federal program.

Much of the growth of the museum is a result of the work of volunteers who have contributed to the progress of the project.

N. D. Poet Laureate

Mrs. Art (Lydia) Jackson, Grafton, was designated as Associate Poet Laureate of North Dakota by a concurrent resolution adopted on a voice of the House of Representatives at the 44th Legislative Assembly.

Lydia is the author of several books of poems. Many of the poems have particular significance and meaning for the state of North Dakota. She is in the International Who's Who in Poetry, designated as Poet Laureate by American Poets Fellowship Society, and has received numerous other awards. Her poetry is published in many periodicals including the Ideals Magazine, Midwest Chaparral Magazine and many others.

Lydia and her husband, Art, and their only daughter, Elizabeth, Mrs. Leonard Fagerholt, Hoople, are all members of the Walsh County Historical Society.

Party Line Peeve

The phone is always busy—
As busy as can be—
Whenever I must use it,
I'm in a quandary.
They chatter, chatter, chatter

For hours—so it seems—
About poor Willie's tonsils
And Mary Ellen's dreams—
About Rose Anna's Head-
aches—

About the teacher's beau—
About the pretty aprons
That they are going to sew,
About—it really doesn't
matter.

I only wish that they
Would limit to five minutes
Their daytime resume.

By Lydia Jackson
Reprinted from
Pardon My Gaff

Grandma's Album
In Grandma's red plush
album—

Its leaves are edged in gold—
There is a faded picture
Of Grandpa four years old.
The present ceases always.
The years go back and stop
When I see Grandpa leaning
Against a marble top.

His mouth is like a cherub's;
His eyes like pools of bliss;
His dress. . . well. . . if he wore
it

Today, he'd be a miss!
By Lydia Jackson
Reprinted from Pardon My Gaff

Cabin Dedicated

After several years of work and planning the log cabin in the city park in Adams was dedicated on Sunday, September 4, with Attorney Robert Burke, Grafton, conducting the ceremony. Burke commended the people of the Adams community for their active part in honoring those who helped build the area. Burke referred to our area as the "Great Sea of Grass" to the pioneer family. We must stop and appreciate the work and underlying Christian Faith that went into the early homesteads.

The cabin restoration committee consisted of co-chairmen Henry Lundene and James Johnson, Walter Halberg, Oscar Sunderland, Ted Rundhaug, Mrs. Harvey Lykken, Mrs. Charles Clute, Mrs. James Johnson, Mr. and Mrs. Clifford Grove, Mrs. Henry Lundene and Thelma Thorvilson. Ted Torgerson, Park River, also assisted in the cabin.

Financial assistance and other support was received from the Green Thumb Workers, N. D. Bicentennial Commission, Adams Bicentennial Committee, Walsh County Historical Society, Adams Civic Club, Young at Heart Senior Citizens Club, Thompson family of Grafton and the Happy Co-Workers Homemakers. Also thanks to those individuals who donated antiques to help furnish the cabin.

The cabin was built in ap-

proximately 1884 by Knute Salle Olson. Later a Gilbert Hagen family owned the farm and rented it to Pete and Herman Lien and then in 1911 it was sold to the Ludvig Thompson Family. Chester Thompson, rural Grafton, who lived in the house as a young boy, attended the dedication. Some years later a Knute and Frank Skyrud, brothers who were both widowers, lived in the cabin. In 1926, Charley Drevecky purchased the farm and the last family to live in the cabin was the Marvin Drevecky family, son of Charley. They lived in the home until eight years ago when they built a new home and then decided to donate the cabin to help preserve the way of life of early settlers.

So, the cabin holds many memories — some sad and some happy. During the summer, the cabin was open to the public on Sunday afternoons.

Society Extends Special Thanks

A special thanks to individuals and organizations who donated articles, financial assistance and other support to the Walsh County Museum and the Walsh County Heritage Village which are special projects of the Walsh County Historical Society.

Time To Renew 1978 Memberships

Any dues paid after Oct. 1, 1977, are for 1978. We would appreciate it very much if you would take a few minutes of your time to mail your yearly dues and in turn, you will receive your membership card.

ANNUAL REGULAR DUES. \$2.00 per person
ANNUAL BUSINESS & INSTITUTIONAL. \$10.00
LIFE MEMBERSHIP \$100.00

Your support helps sustain our Society.

Stephanie Prepiora, Membership Chairman
Walsh County Historical Society
Minto, North Dakota 58261

Nonprofit Organization
U. S. Postage 2.1 Cents Paid, Minto, N. Dak. 58261
Permit No. 1 Editor - LORRAINE PAULSON