

Final Payment Made For Printing Of 2800 Sets Of "Heritage Book"



Making the final payment to John Morgan of Morgan Publishing Co. are Historical Society members [front row from left to right]: Jean Bodmer, Mazel Nielson, Lorraine Paulson, Nora Gryde, Winnie Flaten, John Morgan, Leonard Jensen and Dr. M. C. Flaten.

Members pictured in the back row, from left to right, are John Novak, Mr. and Mrs. James Johnson, Hazel Berg, Walter Gerszewski, Pete Matejcek and Henry Lundene.

Final payment was made to the Morgan Publishing Co. at the Grafton Record for printing the "Walsh Heritage" book. The payment was made during the October meeting of the Historical Society when it met in Hoople.

Approximately 2,800 sets of the book have been sold. The 1,200 pages contain hundreds of pictures relating the early history of the county in addition to family histories. The two-volume set sells for \$20 and can be purchased at banks throughout the county. The books may also be ordered from Leonard Jensen, Edinburg, but an additional \$2 is needed for postage and handling. A separate order blank is inserted in the newsletter.

Serving on the book sales committee are: Walter Gerszewski, Minto, chairman; Ed Gudajtes, Minto, secretary; Leonard Jensen, Edinburg, treasurer, and area chairmen Dr. M.C. Flaten, Edinburg; Gladys Huseby and Harris Trosen, Fordville; James Johnson, Adams; Mrs. Andrew Haug, Fairdale; Pete Matejcek and John Novak, Lankin; Francis Chromy and Larry Dokken, Forest River; Mrs. John Jelinek, Pisek; Mrs. Maziel Nielson, Mrs. Leonard Fagerholt, Hoople; John L. Johnson, Lennart Almen, Roy Seboe, Mrs. Cliff Berg and Adele Hankey, Park River, and Mrs. Alida Goodman, Mrs. Susie Jackson, Mrs. Francis Phelan, Mrs. Milton Johnston, Myrtle Schrank, Ron Demers and Arnold Hanson, Grafton.

Depot, School, Post Office, Church, Log Cabin, Etc, In Heritage Village

-by KAY VANG & JEAN BODMER

During the last year considerable progress has been made bringing into reality the dreams of the Walsh County Historical Society for a Heritage Village as a location to preserve a number of old buildings and historical artifacts from the area.

From the time of its organization in 1967, the Society has gathered a series of ideas which were drawn up into a comprehensive blueprint by Lloyd Richmond of Richmond Engineering, Inc., of Grand Forks.

In 1969, a 99-year lease was negotiated with the state of North Dakota on a 10-acre site near the eastern edge of Grafton. The property included chain link fence

surrounding most of the grounds. Additional fence has been donated by the Grafton State School so the property can be completely fenced.

The Grafton Bicentennial Committee, chaired by G.W. McIntyre, adopted the Heritage Village as an official Bicentennial project on the recommendation of its Heritage division under the chairmanship of Charles Matcha. The North Dakota Bicentennial Commission also endorsed the project.

Developmental activity actually began when the Voss Depot was moved into the Village in September, 1975. The National Guard donated equipment and personnel to assist Burger and Mattson, professional movers, who were

also engaged in moving all the larger buildings brought in later.

The second building to come into the Village was the Acton School. Vilhjalmur Stefansson, noted Arctic explorer, taught one year in this school while he was a student at the University of North Dakota. The Chase School (Grafton) and the Mandt School merry-go-round and pump were installed nearby.

A post office will be created in a building from Fertile township donated by the Thompson brothers. The original boxes and equipment from the first post office in Grafton will be included in its furnishings

A log cabin dating from the 1880's was donated to the Village

[Continued on page 2]

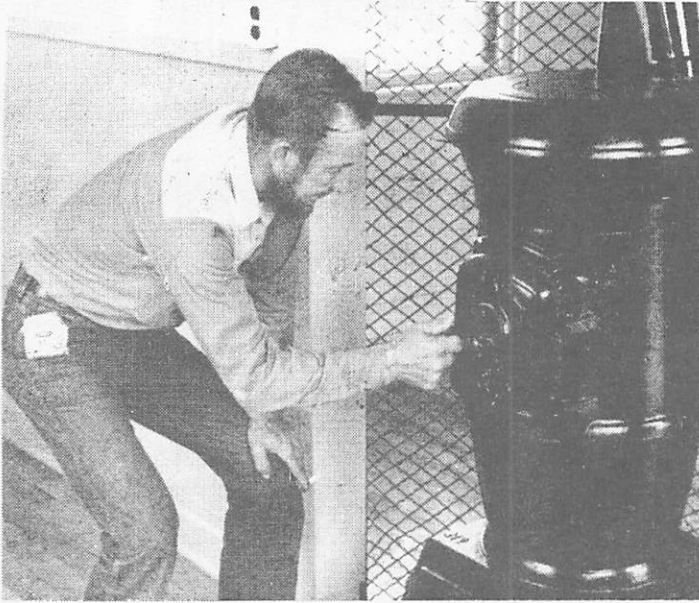
WALSH HISTORICAL SOCIETY TO MEET SUNDAY AT MINTO

The Walsh County Historical Society will meet at the City Hall in Minto on Sunday afternoon, Dec. 5 at 2:00 p.m.

President Henry Lundene urges all members and interested persons to attend.

Additions For Heritage Village

[Continued from page 1]



PROJECT FOREMAN MASON FISHER checks out a pot-bellied stove at Heritage Village.

by the John Donnelly family. After this was moved, some outside planking was removed to reveal the solid oak log construction of its original appearance. It will be furnished with donations from the Donnellys and other individuals, in addition to cooperation from the Walsh County Pioneer Daughters.

The Landstad Church from Auburn was also donated to the Historical Society and moved into the Village during the summer of 1976. All of the furnishings, including the collection plates, candelabra, cross and altar cloth, came with the church.

Bill Lykken donated the Williams Taxidermy shop to the Heritage Village as a memorial to the Williams family. After a new floor was poured, it became the most recent addition to the site. Much of the equipment used by the Williams taxidermists and several specimens of their work came with the building. Donations from several individuals for additional animals preserved by Williams will be moved in when the building restoration is complete.

The biggest assistance to the project came in the form of a CETA (Comprehensive Employment Training Act) grant of \$49,486.00. These funds were used to employ and train individuals who were unemployed. A crew under the capable guidance of Mason

Fisher did an extensive amount of painting, reconstruction, repairs and renovation to all of the buildings. They also reconstructed the new bandstand.

Sizable donations have been received from the Grafton Jaycees and Jaycettes, the Walsh County Historical Society, the Grafton Bicentennial Committee, the Grafton Lions, a benefit auction and gifts from many individuals which have been used to purchase materials used in moving and restoring buildings.

The county commissioners offered gravel to build a road. The

gravel was hauled into the Village by a number of area farmers during a "gravel bee" and it was spread, using equipment donated by the county.

Other buildings donated to the Village include the Mandt Town Hall and a two-story log house donated by the Gryde family and built by the Tvidt family from Glenwood township.

Hopefully construction will begin soon on a theatre building which can be used for plays, art displays, musical programs, conventions and other types of community activities. It is the intention of the Walsh County Historical Society and the Heritage Village Board of Directors, headed by Ralph Adamsen, that the Heritage Village will be a center for continual activity and involvement on the part of the local community and county residents as well as a museum-type facility for preserving and displaying historical artifacts.

Future development of the Village will include moving in a telephone exchange from Forest River. The Green Thumbs will donate some labor to restore the Williams taxidermy building in January.

The WWI, VFW and American Legion Auxiliary are investigating the possibility of creating a Blue Star Marker dedicated to those who served our country in the armed forces.

Rep. Henry Lundene Speaks Sept. 5 At St. Stanislaus Church

A Bicentennial marker was blessed Sunday, Sept. 5 at St. Stanislaus Church in Warsaw. Rep. Henry Lundene, president of the Walsh County Historical Society, spoke at the ceremonies. He ended his remarks by stating that "progress remembers the past."

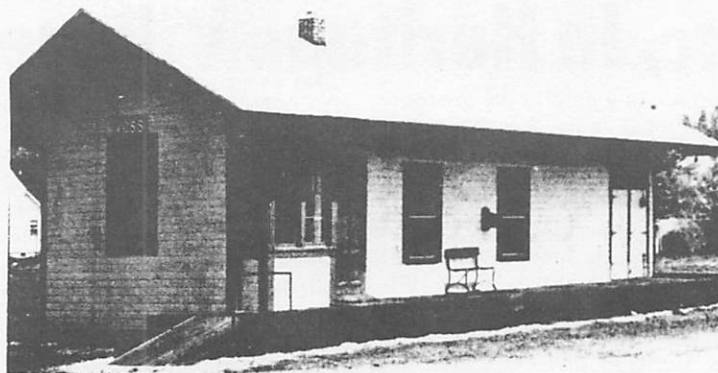
Robert Dahl, mayor of Grafton, also spoke at the unveiling. Rev. Stanley Duda officiated at the blessing of the marker and the Mass.

\$1800 Raised For Historical Society At Public Auction

A public auction for the benefit of various Walsh County Historical Society projects was held Oct. 14 in the Grafton Armory. Approximately \$1,800 was realized at the sale. A plant and baked goods sale was held in conjunction with the auction.

Francis Chromy and Harley Camperud, auctioneers, donated their services at the sale. Lunch was also served.

The society would like to thank individuals and businesses who donated old and new items. A note of appreciation is also in order for those who served in other capacities, and the First National Bank and the Walsh County Bank who clerked the sale and helped make this first benefit auction a success.



Voss Depot was the first building in Heritage Village.



Exterior work completed on Donnelly Cabin. Will be furnished like a pioneer home.



The world's highest mountains, the Himalayas, spread over 1,500 miles and their peaks are more than 24,000 feet high.

30 Walsh People Interviewed On Tape As Part Of State Historical Society's History Project

In late April 1976, Larry Sprunk, project director of the oral history project for the North Dakota State Historical Society, was in Walsh county taping the early history of the area -- including recollections of old-timers.

The North Dakota Oral History Project was three years in the making and it was the first attempt to preserve the memories of pioneer farmers and ranchers, railroad men, teachers, clergy, politicians, doctors and nurses, businessmen and others who remember the condition of life in North Dakota in the decades following statehood.

The interviews average 90 minutes in length and are humorous at times, while tragic at others. The tapes will be in Bismarck at the new Heritage Center.

The project was initially funded for six months by the North Dakota Revolution Bicentennial Commission, with an additional year being funded by the North Dakota Farmers Union and later by the State Historical Society of North Dakota.

Those interviewed in the area are as follows:

Adams: Walter Halberg, Henry O. and Selma Lundene, and Oscar Sunderland.

Conway: Joseph L. Bina.

Edinburg: Dr. M.C. and Winnifed D. Flaten.

Fairdale: Bernard Hultstrand and Jacob P. Westby.

Fargo: Canon Ted Smith.

Fordville: G.K. Ness.

Grafton: Charles Adamson, W. T. Depuy, John S. Donnelly, Mrs. P.J. Donnelly, Nellie B. Hanson, Arthur F. and Lydia O. Jackson, W.J. "Bill" Johnston, Hugo Kutz, Rilie Morgan and Joe Thompson.

Grafton-Fordville: W. F. Willer Hoople: Nora Gryde and Carl Paulson.

Lankin: Joe Matejcek and Lucy Zeman.

Park River: Mrs. Stella Skjerven, Anna McIntyre and Ted Torgerson.

Minto: Herman C. Schanilec.

TO A GREAT MANY people any question is like the moon—they can see only one side of it.

Heritage Village Road Graveled By 24 Trucks

Twenty-four trucks steadily rolled and spread gravel July 1 to make the Walsh County Heritage Village in Grafton passable for those who wish to drive around the area.

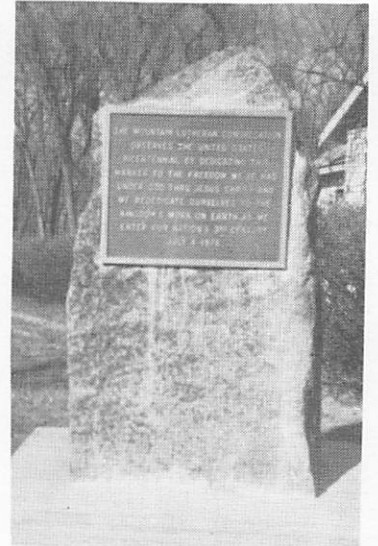
The Historical Society would like to extend a thank you to Burbidge Farm of Park River, and Bjerke Trucking, Norman Burns, Earl Anderson, Harley Kingsbury, Jack Bjerneby, Arnold Clemenson, L.C. Thompson Farm, Donnelly Farms, James E. Johnston, Boone Farms, Gordon C. Thompson, Arnold Hove, Ardell Almen, Dolan Brothers, Lynn Ebert, Ole Aasand, Elton Brekke and Dennis Vogslund, all of Grafton.

R.T. Swanson, Marcell Hillier, Don Folson, Flaten Farms, Carl Nilson Trucking and Orlan Melland Trucking, all of Hoople, also pitched in.

Paul Nilson and John Paulson, Hoople, and Joe Thompson and Murray Swanson, Grafton, hired loads delivered to the site.

THE HANDWRITING on the wall usually means you're going to have a great deal of trouble getting it off.

Mountain Lutheran Church Of Adams Gets Plaque



The Mountain Lutheran Church in Adams unveiled a plaque in the churchyard commemorating the era of the Bicentennial 1776-1976. The plaque reads as follows:

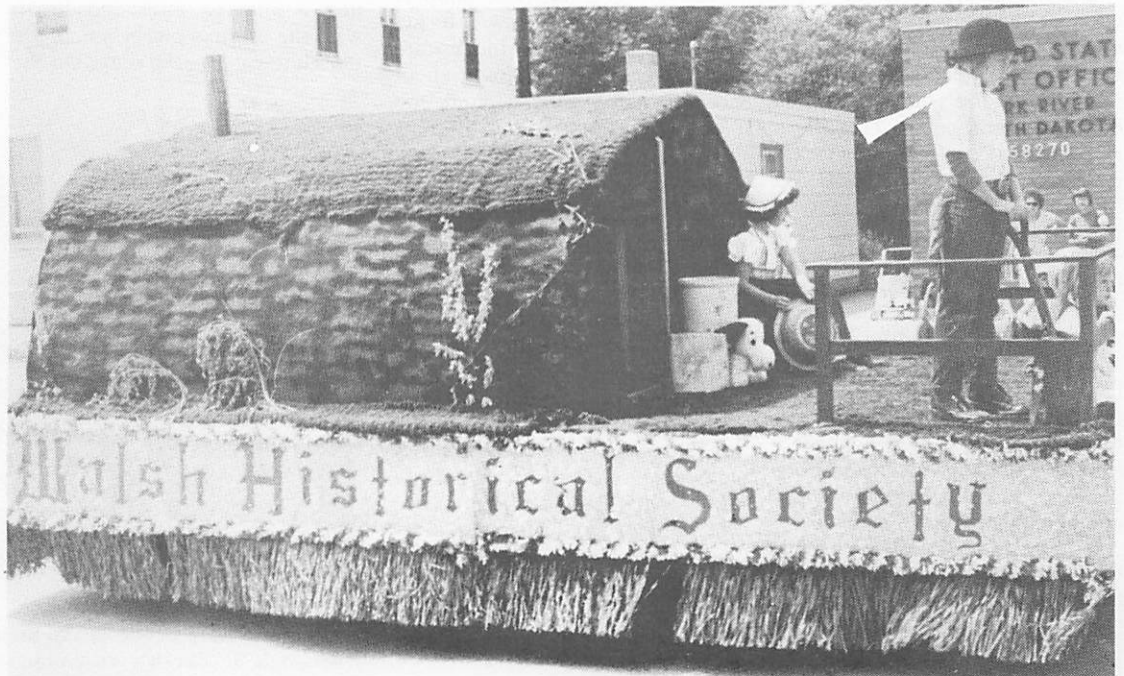
"The Mountain Lutheran Congregation observes the United States Bicentennial by dedicating this marker to the freedom we've had under God, thru Jesus Christ, and we rededicate ourselves to the Kingdom's work on earth as we enter our Nation's 3rd Century, July 4, 1976."

Sod Hut Float In Many Parades

A float sponsored by the Walsh County Historical Society appeared in several parades this past summer and it is now on display at the County Museum in Minto.

The float depicted the sod shanty built in 1895 by John Bakken, a pioneer in Silvesta township. The sod shanty also appeared on the Homestead Act Stamp issued in 1962, and this past year the shanty appeared on a stamp in Norway commemorating their Sesquicentennial. Mr. Bakken has several relatives in the area and some of these young people rode on the float this summer.

Clifford Grove, Adams, constructed the replica of the homestead sod shanty with the assistance of Dennis Grove, Henry Lundene, Ted Torgerson and Lennart Almen. The Charles Stewart family of Grafton designed the lettering on the float.



Museum Curator Tells Of Growth Of Historical Complex At Minto

-by STEPHANIE PREPIORA
Curator

The Bicentennial year was one of growth and achievement for the Museum. A large part of the growth was in the acquisition of additional buildings to the original Museum complex which was the Minto Public School building. There is a long term lease of the gymnasium-auditorium. In addition, a one-room country schoolhouse, a log cabin and a cook car were moved onto the Museum grounds.

The Conway jail was set on cement footing, the interior was restored and redwood siding was applied. The school and the log cabin were moved in and placed on cement footings. Much of the restoration of the log cabin and country school is complete. However, some of the interior and all of the exterior of the school needs to be painted.

A cook car was moved in and some very minor restoration has been done. A board walk connecting all the moved-in buildings has been built. Additional features in this area are a school bell, replicas of a well and pump and an old oaken bucket, and many other items. The school, log cabin and cook car are partially furnished; we hope to get additional articles in the near future.

Since January 15, 1976 the quonset has been converted from a combination gymnasium-auditorium to a display room for farm machinery and other vehicles both large and small. There is a rare display of antique cars including Model T Fords, a Mitchell and Willys Knight, a mid-thirties pickup, and a 1922 wooden Advance-Rumely threshing machine. There is a large display of early farm machinery and equipment including a scythe and cradle, a reaper, a binder, breaking plows, drill, hand cultivators, fanning mills, flail, hay loader, grain box, buggy, Minto's first fire engine, potato cutting, planting and digging equipment and much more.

Within the original museum building, one of the rooms has been converted into a country store featuring articles of early pioneer clothing, patterns, embroidery thread, rare laces, cash registers, large cheese cutter,



This mannequin dressed in pioneer clothing fits in perfectly with the surroundings of the general store in the county museum.

cameras, scales, store coffee grinders, hardware and household articles such as washing machines, cream separators, incubators, canned goods, various butter churns, fruit jars, bottles, crocks, pots and pans, dishes, irons, lamps and lanterns from kerosene through gasoline and Aladdin, to name only a few.

Leading off the country store, two cloak rooms were converted into one single room which is a blacksmith shop. The shop is complete with a bellows, forge, anvil, all varieties of blacksmith tools, horse shoes and about every article normally found in a blacksmith shop.

On the second floor, a large room has been divided into areas to simulate an old-fashioned home. The kitchen features a wood-burning stove and wood box, kitchen cabinet, pie cupboard, wooden ice box, table and other items used in the preparation of food.

Leading off the kitchen is a small laundry room with a wash tub and board -- including a bar of homemade soap plus a metal tub used for the Saturday night bath. The dining room has an oak sideboard, round table and chairs. Other articles of interest are a convertible high chair, wall clock, lamp, dishes and other items featuring decor of the era.

In the living room there is an old-fashioned parlor stove com-

plete with isinglass, a combination book case and desk, parlor lamp and a sofa and chair. The windows have beautiful maroon-colored drapes which were made from the quonset's stage curtain.

The bedroom has a wooden bedstead with high head and foot boards, marble top dresser and wash stand. On the dresser are articles normally found, such as small kerosene night lights, a regular kerosene lamp also used to heat a curling iron, dresser set and a shaving mug and brush with the original owner's name in gold lettering on the mug. On the

wash stand is a bowl and water pitcher and under the bed (of course) the inevitable chamber pot.

One of the rooms has been converted into a wildlife room featuring about 150 birds and animals native to, or at times found, in Walsh county. They are all the work of the late Frank Vejtasa of Fairdale and are displayed against murals depicting their natural habitat. Plans are in progress for additional native wildlife displays. A collection of Indian relics and artifacts are also displayed in this room.

Some of the other rooms are in the process of being rearranged to better display the many things we have to show and to accommodate all the additional things being donated. Among the things presently displayed in the various rooms is a rare doll collection, religious articles from various denominations, old family Bibles, an organ, a rosewood piano and other musical instruments, hand work, clothing (some very elegant), photographs, old catalogues, old newspapers and magazines, baby carriages, trunks (one dating back to 1729), dental and medical instruments, radios and phonographs, posting machines and typewriters -- to name only a few.

Lest I forget a part of our heritage, there is a home brew

[Continued on page 5]



Pictured here is one of the many displays at the county museum. Although it doesn't resemble it's present-day counterpart, the equipment shown above was once used by the Minto Fire Department.

Museum Grows

[Continued from page 4]



Many an antique collector's eye would sparkle upon seeing this realistic pioneer dining room in the museum.

still complete with cooler and collecting jugs dating back to the prohibition era.

It takes alot of money to develop such a project. We have been fortunate in obtaining federal help thru the Green Thumb and CETA programs and thru ARBC of North Dakota. These are temporary and limited programs which have helped us immensely, but we do not know whether they will be available in the future.

Grants from the Green Thumb and CETA programs could be used for labor costs only. The ARBC was a matching fund and could be used for only specific designated projects. Money for supplies has been obtained from the Walsh County Historical Society, from organizations such as the Minto Jaycees, Minto bridge clubs, Joy Riders Snowcat Club, and very limited private donations.

rewarded in some measure by the nearly 2000 guests who visited the museum this season. These represent not only individuals but families, organizations and schools who came from 29 states (including Alaska) and also Manitoba, British Columbia, England, Australia and Poland.

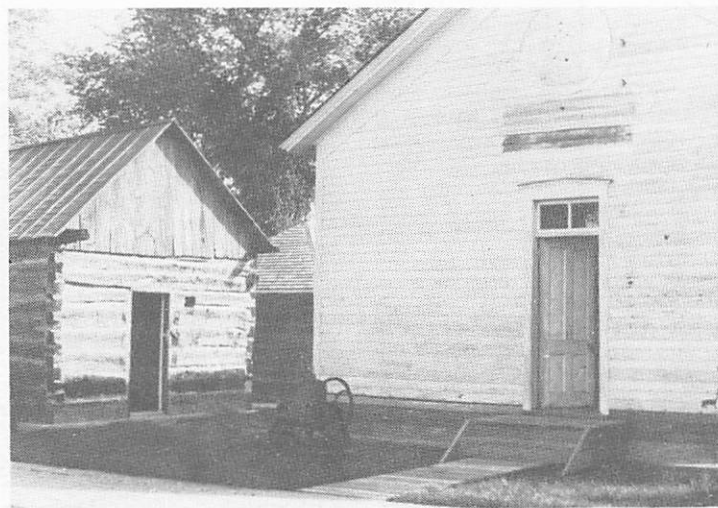
Other than the sources already named who have helped in the development of the museum thus far, there are many to whom we are deeply indebted for their contributions in one form or another.

For their generous publicity we wish to thank the Red River Valley Historical Society, Grand

Forks Herald, Grafton Record, Walsh County Press and radio station KXPO of Grafton.

We are most grateful to all those who have donated their valuable family heirlooms to the museum for all to enjoy. Space does not permit us to name each contributor individually at present, but we hope to do so at some future time. However, at this time we would especially like to thank Mr. A.J. Hultstrand of Fairdale for his valuable donations which have added so much to museum.

Last, but not least, we are deeply indebted to our wonderful volunteers who give so generously of their time and effort and without whose interest and hard work the development of the museum, thus far, could not have been accomplished.



Finding a new home on the museum grounds are a school, log cabin and old jail house from Conway.

Walsh County Historical Society Museum Dedicated At Minto

The Walsh County Historical Society Museum in Minto was dedicated Sunday afternoon, July 18 with an open house at the museum and a dedication program at the Minto High School

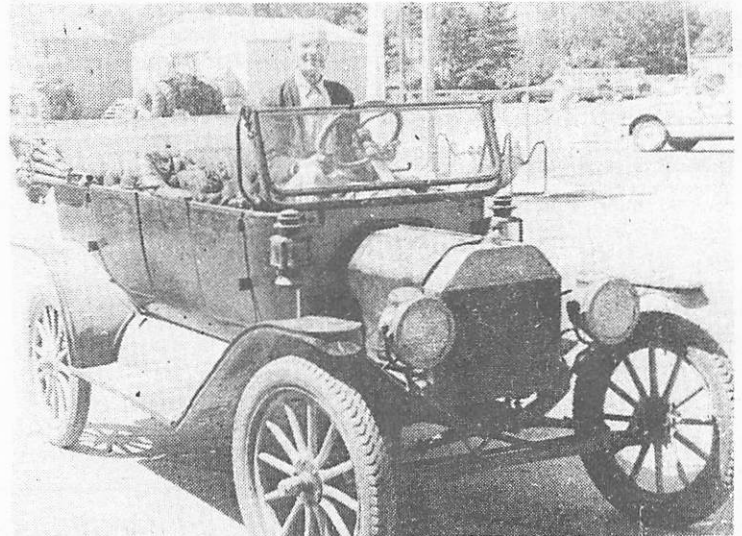
Auditorium.

Francis Phelan served as emcee of a program which included musical selections by Mary and Anne Coffey, and invocation and benediction by Father George Lommel. Minto Mayor Jerry Misialek welcomed the group and the dedicatory address was given by Lloyd Omdahl.

Antiques Displayed At Walsh Bank

Antique household articles and old farm machinery were on display at the Walsh County Bank in Grafton for 10 days during Grafton's Bicentennial Celebration in June. Members from the historical society brought some of their prized articles for the display.

Officers and directors of the museum are Frank Schiller, chairman; Herman C. Schanilec, vice-chairman; Ellen Misialek, secretary; Carol Tibert, treasurer; Stephanie Prepiora, curator; Helen Lizakowski, vice-curator, and Elizabeth Rolzinski, museum news reporter and finance chairwoman.



Andy Hultstrand, 82 years of age, drove this 62-year-old Model T 55 miles from Fairdale to the County Museum in Minto where it is on display with the other items belonging to Mr. Hultstrand.

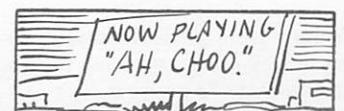
WALSH COUNTY HISTORICAL SOCIETY OFFICERS & DIRECTORS FOR 1976

OFFICERS

President Henry Lundene, Adams
Vice-President R.F. (Pete) Matejcek, Lankin
Recording Secretary Jean Bodmer, Hoople
Corr. Secretary Lorraine Paulson, Hoople
Treasurer Leonard Jensen, Edinburg

DIRECTORS

Charles Stewart, Grafton
Thelma Wick, Park River
Walter Gerszewski, Warsaw
Tom Walker, Hoople
Lennart Almen, Park River
Gladys Huseby, Fordville
Ed Gudajtes, Minto
Leona Walstad, Park River
James Johnson, Adams



The first motion picture copyrighted in the U.S. was of a man sneezing. The year was 1894.

Site Of "Old Edinburg" Marked During Bicentennial Celebration

At the Edinburg Bicentennial celebration June 27, 1976 a large marker was unveiled on the site of "old Edinburg" which is located approximately three miles northwest of the present site of Edinburg.

Funds for the project were raised by the civic league of Edinburg. The Walsh County Historical Society donated a marker designating it as a historical site.

A post office was located in Section 5 of Lampton township from 1882-87 but was bypassed when the Great Northern Railroad Grand Forks-Hannah line came through the area and businesses and people moved to the present site of Edinburg, leaving "old Edinburg" deserted.

The settlement was first called Edinburg" by Postmaster Christian Buck, who operated the post office in Ove Oveson's Store and received mail from Grafton delivered by Ole Gjevne. The Oveson Store also served as a recreational center and schoolhouse for the early settlers, as well as a rooming house.

A few businesses developed in the first five years of Edinburg's existence. O. Hunstad operated a blacksmith shop, O. Travallen ran the saloon, and Charles Buck (half-brother of Christian Buck) owned the drug store and gave medical aid to pioneers.

Leonard Jensen, treasurer of the Historical Society, served as emcee at the ceremony. Myrtle Berg, civic league president, and Hilda Brevik, owner of the land on which the marker was placed, unveiled the marker. Remarks were made by Opal Gemmill, civic league treasurer, and Pete Matejcek, vice-president of the Historical Society.

Committee members for the erection and dedication of the marker was George Berg, Ted Torgerson, Joe Nygard, Leonard Jensen, Myrtle Berg, Winnie Flaten and Rosemarie Myrdal.

Pioneer Daughters

The Pioneer Daughters is being reorganized in Walsh county. Women from pioneer families in North Dakota are welcome to join and dues are \$3 per year.

For further information contact Mrs. Milton Johnston, Grafton, or Mrs. M.C. Flaten, Edinburg.



TAKING PART IN THE UNVEILING ceremony at the site of "old Edinburg" were [from left] Pete Matejcek, Opal Gemmill, Hilda Brevik, Myrtle Berg, Winnie Flaten, Rosemarie Myrdal and Leonard Jensen.

Threshing Bee Draws Huge Crowd To PR

A threshing demonstration under the sponsorship of the Northeast North Dakota Pioneer Machinery Association was held Sunday afternoon, Aug. 29 on the Walsh County Extension experimental plot site located west of Park River.

Five threshing separators, one steam engine and several tractors to power the separators were

used. There were also horse-drawn bundle racks and other old machinery and cars on display.

Membership in this organization is \$10 per year. If interested in old machinery and its preservation, why not become a supporter? Serving as president is John Paulson. John Kelly is vice-president and Bradley Nilson is secretary-treasurer.

Pulaski Township Unique In U.S.A.

Pulaski Township of Walsh County, North Dakota is probably a unique township in the United States. That is what Roger Christenson, Field Representative of the North Dakota Bicentennial Commission, told the outdoor gathering at Warsaw, when he presented the Bicentennial Flag to its chairman, Mike Grembowski, recognizing Pulaski Township as a Bicentennial Community on July 28. Other township officers present at the presentation were John Wysocki, Edwin Kosmatka and Hilary Feltman, as well as the Bicentennial chairman and co-chairman, Walter Gerszewski and Steve Mozinski. The flag was immediately hoisted on the newly-erected Bicentennial flagpole, under the flowing stars and stripes.

The nine ton monument, a mahogany granite, is a nine-foot replica of the George Washington Monument on the Capitol grounds in D.C., is engraved

with the Bicentennial emblem on the right side, while the left side bears the Polish Eagle emblem. The pioneer's belief in God and their new adopted nation, is expressed in the cross supporting the heavy base on which the words "Faith, Hope and Love," are inscribed. The engraving on the face of the monument reads "GOD BLESS OUR NATION ON THIS 200TH YEAR AND FOREVER." Immediately below, the engraving reads "DEDICATED TO THE POLISH PIONEER SETTLERS WHO MIGRATED HERE FROM 1877 ON." The Polish script translated reads, "IN HONOR OF OUR BRAVE POLISH PIONEERS, WHO SETTLED ON THIS PRARIE AND OPENED A NEW TERRITORY, WARSAW AND PULASKI, TO WHICH THEY BROUGHT FAITH AND BUILT THIS SPLENDID CATHOLIC CHURCH."

—by Walter Gerszewski

Walsh Historical Society Has Over 500 Members

—by MRS. LENNART ALMEN
Membership Chairwoman
Park River, N. D.

As 1976 draws to a close our records show 508 paid memberships in the Walsh County Historical Society. As of Oct. 1, 1976 memberships received will be credited toward the following year.

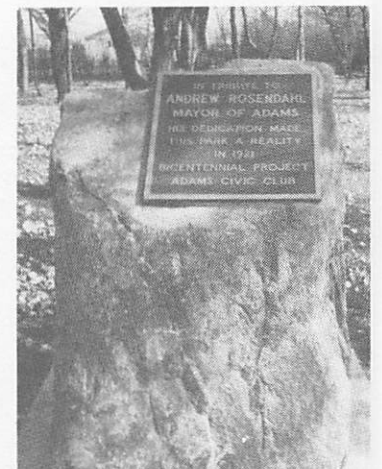
The dues are \$2 per year. An envelope is enclosed for your convenience as well as ours.

We have received four life memberships of \$100 each from Dr. John and Mrs. Lipinski, Kalispell, Mont., and Mr. and Mrs. J.D. Miller, Mr. and Mrs. Louis Wisniewski, and the W.L.A. Grain Co., all of Minto.

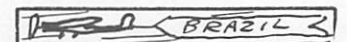
We hope you will consider a life membership as a gift you might want to give to the Walsh County Historical Society.

Your financial support and active participation help keep the Historical Society active.

Adams Civic Club Places Marker At Park



As a Bicentennial project, the Adams Civic Club placed a marker in the Adams Park. The marker was a tribute to Andrew Rosendahl, former mayor of Adams, who through his dedication and hard work made the park a reality in 1921.



Only four countries in the world are larger than Brazil, largest country in South America: Russia, China, Canada and the United States.

Two-Volume History Of Early Walsh County Dedicated; Sen. Burdick & Gov. Link Present

The two volume, 1,200-page set depicting the early history of Walsh county and its pioneers was dedicated Sunday afternoon, May 16 at the Grafton Armory. The Valley Band of Hoople and Crystal played prior to the dedication.

Francis Phelan served as emcee, and remarks were given by Gov. Art Link and Sen. Quentin Burdick. Judge James O'Keefe conducted the book dedication ceremony.

Henry Lundene, president of the Walsh County Historical Society, acknowledged the committee of nine who compiled the book and special recognition was given to Mrs. M.C. (Winnie) Flaten who served as chairwoman of the book committee. Henry Lundene stated that the books would not have been possible if there weren't such dedicated people in Walsh county who so unselfishly donated hundreds of hours of hard work.

A special thank you was given to Gunder Berg, former Walsh county newspaperman, who donated his services as editor.

Ethnic groups taking part in the ethnic program were the Norse Chorus, Polish National Alliance Dancers, a Swedish group, a French group, a British Isles group and Cambodian Children.

Paul Hankey closed the program with the singing of "America, the Beautiful."

Ethnic costumes and Bicentennial dresses were evident at the dedication. A pork barbeque dinner was prepared by Mark Holt.



Pictured here are members of the book committee [from left to right]: Nora Gryde, Alida Goodman, Francis Chromy, Leona Walstad, John Novak, Winnie Flaten, Ted Gilham, Lois Stanislawski and Otella Johnson.

Book Dedication Program Scenes



The Norse Men's Chorus performing at the dedication.



Rev. Grael Gannon of Park River bagpipes for the British Isles number at the book dedication ceremony.



The Polish Dancers provided much color and liveliness to the program.



More than 90 percent of the land in North Dakota is agricultural, making it the most rural of the 50 states.

Bicentennial Year Was Real Active For Historical Society; Includes Heritage Book, Dedication Of Museum; And Public Auction

-by **LORRAINE PAULSON**
Corresponding Secretary
& Publicity Director

This Bicentennial year has been an active one for the Walsh County Historical Society. Monthly meetings were scheduled in addition to the several special events such as the dedication of

the "Walsh Heritage" book in May, marking the original site of "old Edinburgh" in June, a display of antiques and small items of old farm machinery and tools at the Walsh County Bank in Grafton in June, grand opening and dedication of the Walsh County Museum in Minto in July,

and a public auction for the benefit of various historical projects at the Grafton Armory in October.

Nine monthly meetings were held over the past year: meetings were held in the county extension office in Park River in January, February, March, April and May; no meeting was held in June; in July the society met in Edinburg where the museum was open to the public and lunch was served in the park; and in August the group met in the city hall in Park River following the threshing demonstration sponsored by the Northeast N.D. Pioneer Machinery Association.

The September meeting was held in the depot at the Heritage Village in Grafton -- several buildings on the grounds were open to the public at the time and a band concert was presented by the Grafton Legion Band prior to the business meeting. The October meeting was held in Hoople and the final payment was made to Morgan Publishing Co. of Grafton for printing the "Walsh Heritage" book. The last meeting of the year was held in Minto the first week in December.

Many projects ranked high in priority at each meeting. Since the book came off the press in May, progress on the project was discussed at each meeting. Thousands of volunteer hours were needed to make this book the success it is.

Due to the availability of federal funds for labor only, the Walsh Heritage project in Grafton finally got off the ground, or maybe I should say 'it progressed past the talking and planning stage.'

A gymnasium joining the Walsh County Museum in Minto was leased in '76 and became part of the museum complex so that more and larger items could be put on display.

Since each of these projects and several others are covered in separate articles, I have tried to be as brief as possible. It has been an exciting year for the members of the society and these projects have given us a sense of accomplishment.

Anyone interested in preserving and restoring history are most welcome to become active members of the **Walsh County Historical Society**. I feel that your time and effort will be well spent.

Log Cabin Restored



The city park in Adams has taken on a new look over the past few months thanks to many willing workers and the Green Thumb program.

Elmer Johnstone and Carl La France, Park River, and Jeff Kotaska, Conway, worked hard under the able direction of Henry Lundene to improve the park grounds and log cabin. Trees and hedge were trimmed and the log cabin was refinished on the outside with windows to be put in

later. The chimney was built by Clifford Grove.

A committee has been appointed to head the planning and finishing of the cabin. They are as follows: Henry Lundene, chairman; Ted Rundhaug, Clifford Grove, Florence Lykken, Delores Klute, Oscar Sunderland, Walter Halberg and Mr. and Mrs. James Johnson.

Cooperation and hard work by many make restoration projects a reality.

Time To Renew 1977 Memberships

Any dues paid after Oct. 1, 1976 are for 1977. An envelope is enclosed in this Newsletter and we would appreciate it very much if you would take a few minutes of your time to return your yearly dues. In turn, you will receive your membership card.

ANNUAL REGULAR DUES \$2.00 per person
ANNUAL BUSINESS & INSTITUTIONAL \$10.00
LIFE MEMBERSHIP \$100.00

Your support helps sustain our Society.

Stephanie Preplora, membership chairman
Walsh County Historical Society
Box 342, Minto, North Dakota 58261

Nonprofit Organization

U.S. Postage 2 Cents Paid, Minto, N. Dak. 58261
Permit No. 1 Editor - LORRAINE PAULSON